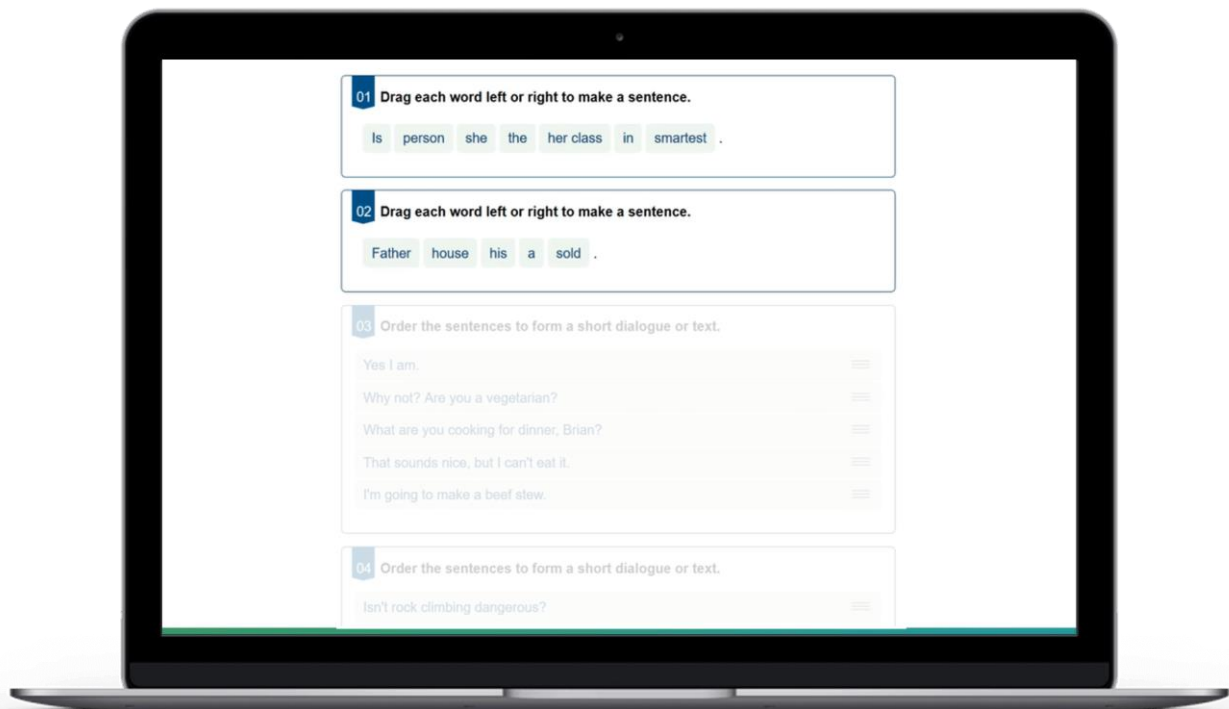


Getting ready to take the Dynamic Placement Test? Try the practice questions below, and then check if you got them right with the answer key on the last page.
Good luck with your test!

Question Type 1: Sentence Reordering



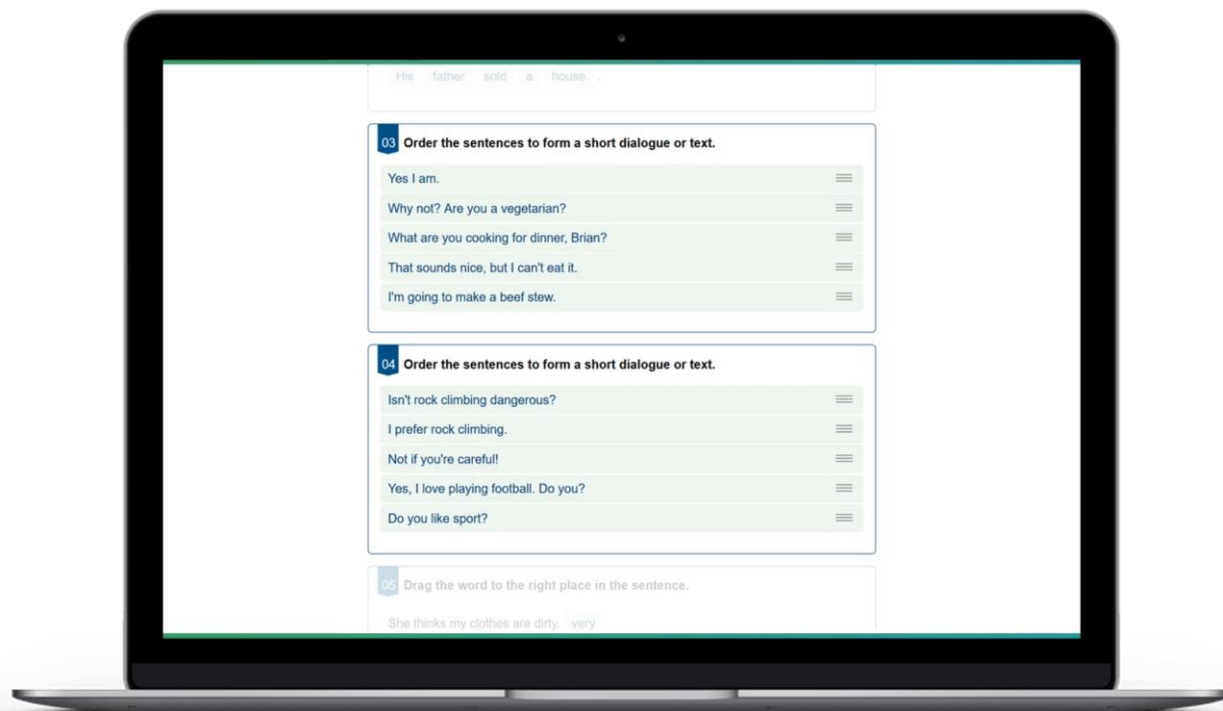
With **Sentence Reordering** questions, such as 01 and 02 in the screen above, you have to move the words left or right to make a correct sentence.

In the real test you will tap and drag the words with your finger or cursor. For this practice test, try writing out the correct full sentences below. Remember, you have to use all the given words in the sentence.

01: [Is] [person] [she] [the] [her class] [in] [smartest].

02: [Father] [house] [his] [a] [sold].

Question Type 2: Dialogue Reordering



With **Dialogue Reordering** questions, such as 03 and 04 in the screen above, you have to move the sentences up or down to make a correct conversation.

In the real test you will drag the sentences up or down by clicking on the ☰ symbol. For this practice test, try writing out the full conversations below.

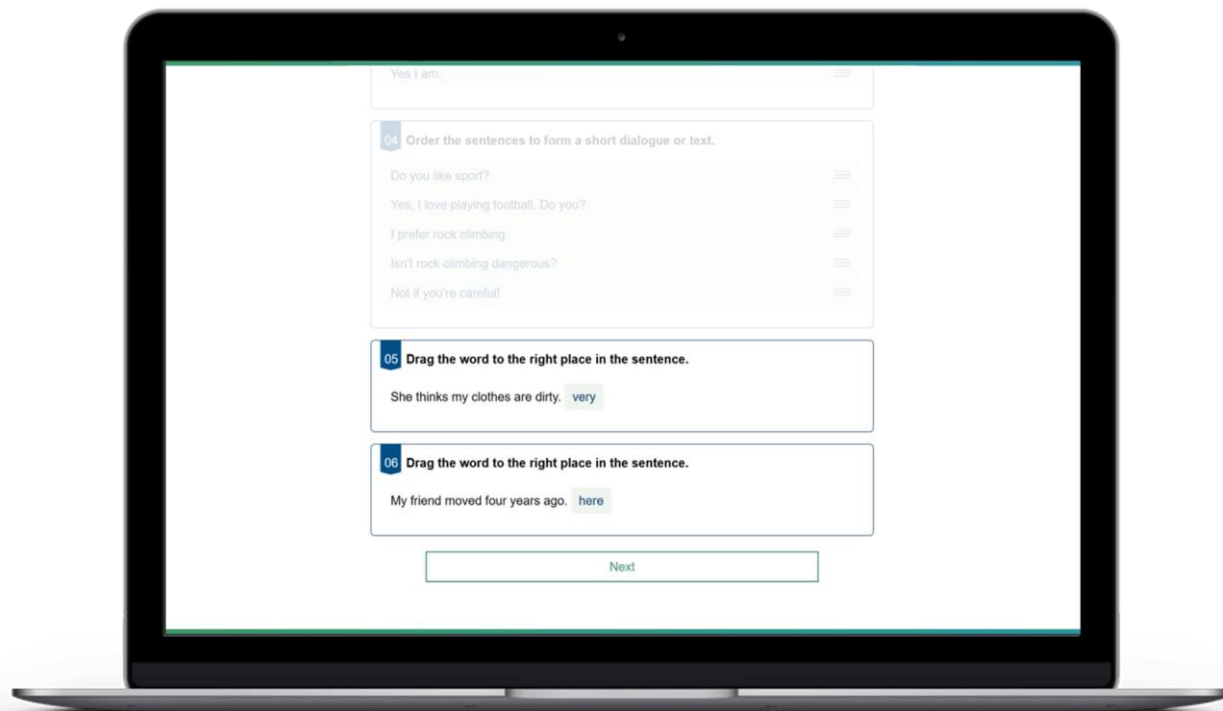
Sentences provided

- 03:** *Yes, I am.*
Why not? Are you a vegetarian?
What are you cooking for dinner, Brian?
That sounds nice, but I can't eat it.
I'm going to make a beef stew.

- 04:** *Isn't rock climbing dangerous?*
I prefer rock climbing.
Not if you're careful!
Yes, I love playing football. Do you?
Do you like sport?

Your correct conversation

Question Type 3: Word Placement



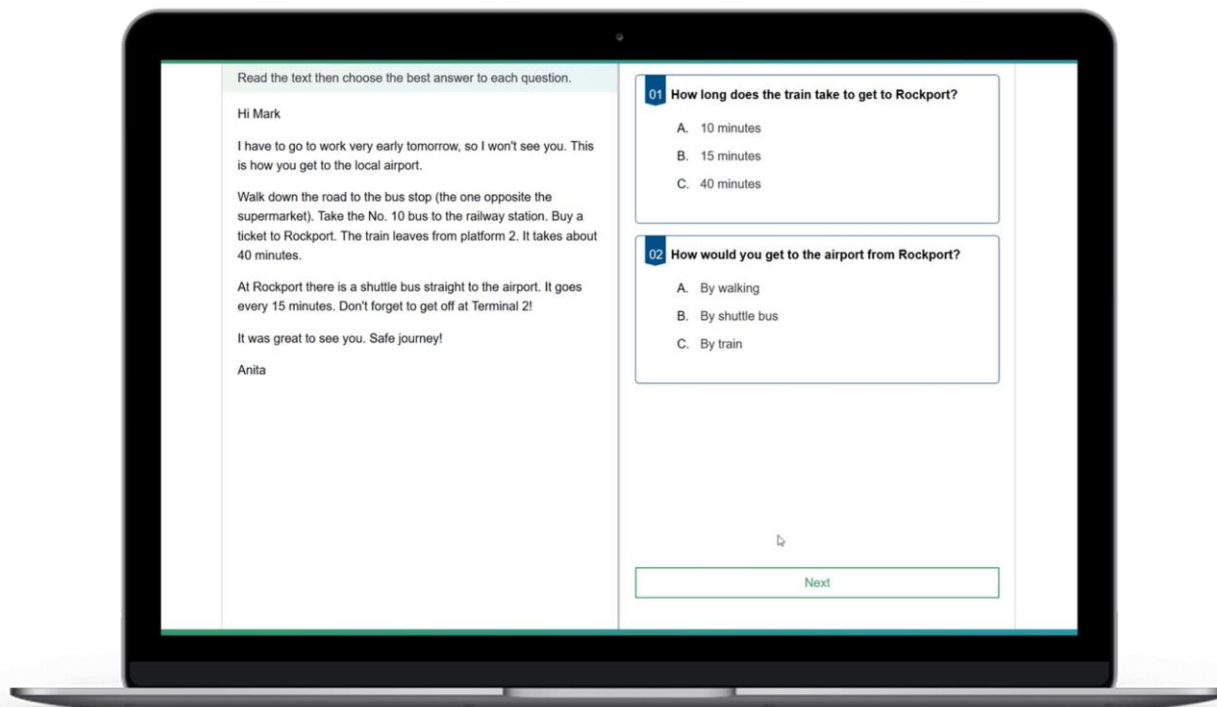
With **Word Placement** questions, such as 05 and 06 in the screen above, you have to drag the highlighted word (at the end) to the correct place in the sentence.

In the real test you will tap and drag the words with your finger or cursor. For this practice test, try writing out the correct full sentences below.

05: *She thinks my clothes are dirty. [very]*

06: *My friend moved four years ago. [here]*

Question Type 4: Reading Questions



With **Reading** questions, such as the one in the screen above, you have to read the text on the left of the screen and answer the comprehension questions on the right.

The text and questions are copied below. Read the text and then choose option A, B, or C for each of the questions.

Text: *Hi Mark,*

I have to go to work very early tomorrow, so I won't see you. This is how you get to the local airport.

Walk down the road to the bus stop (the one opposite the supermarket). Take the No. 10 bus to the railway station. Buy a ticket to Rockport. The train leaves from platform 2. It takes about 40 minutes. At Rockport there is a shuttle bus straight to the airport. It goes every 15 minutes. Don't forget to get off at Terminal 2!

It was great to see you. Safe journey!

Anita

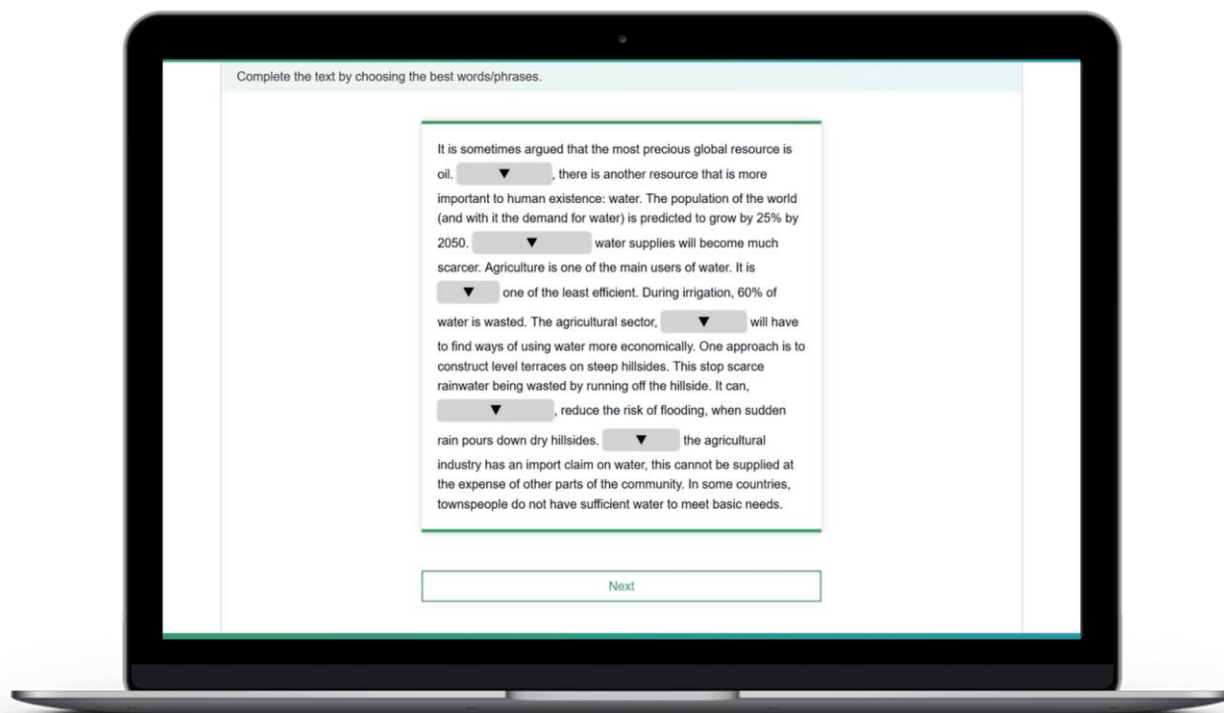
01: How long does the train take to get to Rockport?

- A. 10 minutes B. 15 minutes C. 40 minutes

02: How would you get to the airport from Rockport?

- A. By walking B. By shuttle bus C. By train

Question Type 5: Text-based Questions



With **Text-based** questions, you will see a text with some words missing. In the real test, you will need to click or tap on each blank space to see word options and choose the correct one. For this practice test, you can read the text below and choose a word for each blank space.

Text: *It is sometimes argued that the most precious global resource is oil. [01], there is another resource that is more important to human existence: water. The population of the world (and with it the demand for water) is predicted to grow by 25% by 2050. [02] water supplies will become much scarcer. Agriculture is one of the main users of water. It is [03] one of the least efficient. During irrigation, 60% of water is wasted. The agricultural sector, [04] will have to find ways of using water more economically. One approach is to construct level terraces on steep hillsides. This stops scarce rainwater being wasted by running off the hillside. It can, [05], reduce the risk of flooding, when sudden rain pours down dry hillsides. [06] the agricultural industry has an import claim on water, this cannot be supplied at the expense of other parts of the community. In some countries, townspeople do not have sufficient water to meet basic needs.*

- 01:** A. Despite
B. Consequently
C. Also
D. However

- 03:** A. Also
B. Addition
C. Despite
D. Though

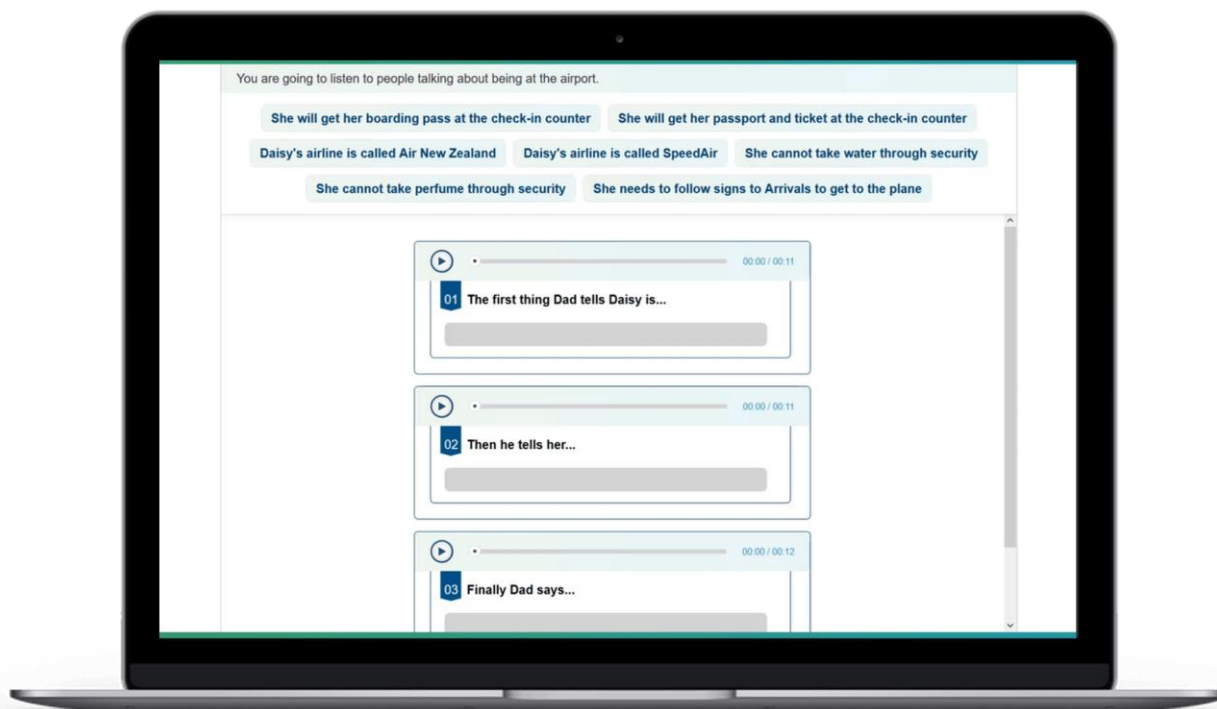
- 05:** A. Never
B. Moreover
C. Nonetheless
D. Scarcely

- 02:** A. On the other hand
B. As a result
C. Nonetheless
D. In spite of this


- 04:** A. However
B. Therefore
C. Nonetheless
D. Also

- 06:** A. Although
B. As a result
C. Always
D. In spite of

Question Type 6: Listening Questions



With **Listening** questions, you will listen to an audio and answer comprehension questions. While you can't practice listening questions on this practice test, the screen above shows you what to expect when you take the real test.

You play the audio by clicking on the  button at the top of each question. Listen to the audio file. Then, check the answer options at the top of the screen. Click on the correct answer and drag it to the blank space in the question.

Dynamic Placement Test Advice

Taking a test can be scary! Here are some tips to help you succeed when you take the real test:

1. Do the questions seem too easy or too hard? Don't worry! The questions will get harder or easier depending on how you answer them. The test will adapt to your level.
2. Try not to get stuck on one question. If you don't know the answer, it's best to move on to the next question.
3. Remember your earphones and to take the test in a quiet location. This will help you focus on the audio, and make sure you understand what is being said.
4. Use Google Chrome or Mozilla Firefox to take the test, if possible.



Answer Key

Once you've finished the practice questions, check your answers below.

Sentence Reordering Questions

- 01: [Is] [person] [she] [the] [her class] [in] [smartest].
She is the smartest person in her class.
- 02: [Father] [house] [his] [a] [sold].
His father sold a house.

Dialogue Reordering Questions

- 03: What are you cooking for dinner, Brian?
I'm going to make a beef stew.
That sounds nice, but I can't eat it.
Why not? Are you a vegetarian?
Yes, I am.
- 04: Do you like sport?
Yes, I love playing football. Do you?
I prefer rock climbing.
Isn't rock climbing dangerous?
Not if you're careful!

Word Placement Questions

- 05: *She thinks my clothes are dirty. [very]*
She thinks my clothes are **very** dirty.
- 06: *My friend moved four years ago. [here]*
My friend moved **here** four years ago.

Reading Questions

- 01: **How long does the train take to get to Rockport?**
A. 10 minutes B. 15 minutes C. 40 minutes
- 02: **How would you get to the airport from Rockport?**
A. By walking B. By shuttle bus C. By train

Text-based Questions

- 01: A. Despite
B. Consequently
C. Also
D. However
- 02: A. On the other hand
B. As a result
C. Nonetheless
D. In spite of this
- 03: A. Also
B. Addition
C. Despite
D. Though
- 04: A. However
B. Therefore
C. Nonetheless
D. Also
- 05: A. Never
B. Moreover
C. Nonetheless
D. Scarcely
- 06: A. Although
B. As a result
C. Always
D. In spite of