

# Brunel Language Centre

Brunel Educational Excellence Centre



**Bespoke Short Courses**



# Introduction

Finding the right English Language course to suit the needs of your organisation can be a time-consuming process with uncertain outcomes. Here at Brunel Language Centre, Brunel University London, we keep things simple by working with you to tailor an English Language course to meet your specific requirements.

Brunel Language Centre was founded in 2005 and is dedicated to meeting the language needs of students, staff and visiting groups. We are part of Brunel Educational Excellence Centre and take great pride in the outstanding teaching and support that we provide our users. Brunel Language Centre is accredited by the British Council and has enjoyed 'Centre of Excellence'<sup>1\*</sup> status since 2012.

Brunel University's appeal goes beyond our academic credentials. Located less

than an hour from the heart of London, we provide the comfort of a campus home with easy access to one of the world's most important business and cultural capitals.

We have modern accommodation, with options to suit all needs and budgets, plus state-of-the-art sports and teaching facilities. Our dedicated team can organise a multitude of events for you and your group, ensuring you make the most of your time here. Your Brunel experience can stretch beyond the campus, with trips to various locations in the UK, from Shakespeare's hometown to the beaches of Brighton.

From classroom to coach tour, Brunel Language Centre at Brunel University London has so much to offer.

**We look forward to welcoming you soon!**

<sup>1</sup>as awarded by the English Language Gazette

# Course Structure

The structure of our courses is flexible. We can provide anything from an intensive 3-week, up to an in-depth 6-month, course. Regardless of how long you choose to study with us, our teachers are able to offer sessions on a variety of topics to suit you. In the past popular options have included:



- **Teacher Training**
- **Business English**
- **British Culture**
- **Presentation and Seminar Skills**
- **Reading, Listening and Note-taking**
- **Grammar and Vocabulary Development**
- **Critical Thinking**
- **English Literature**
- **City Visits**
- **Visits to organisations such as the BBC**

A sample timetable for a typical week might look like this:

## Sample Timetable:

Monday	Tuesday	Wednesday	Thursday	Friday	Saturday
<b>Welcome -</b> Academic Director  Settle into accommodation	<b>9.30-11.15am</b> Placement test - Listening and Reading	<b>9.30 -11.30am</b> Negotiating Skills	<b>9.30 -11.30am</b> English Literature	<b>9.30 -12pm</b> English Idioms	<b>Day Trips</b>  Options include  Brighton
<b>12 - 1pm</b> Buffet Lunch	<b>11.30 - 1.30pm</b> Placement test - Writing	<b>11.45 - 1.30pm</b> Reading for Business	<b>11.45 - 12.30pm</b> Writing for Business	<b>12 - 2pm</b> Contemporary Listening and Note taking	Oxford/ Cambridge  Windsor
<b>2 - 4pm</b> Enrolment/ Tour of Campus and local area.	<b>2 - 5pm</b> London Sightseeing	<b>2.30 - 4.30pm</b> British Culture	<b>1.30 - 2.30pm</b> Presentation Skills	Free time to explore local area.	Hampton Court
<b>6 - 7.30pm</b> Welcome Reception and refreshments, meet with Brunel staff.	<b>5 - 7pm</b> Free time to explore local area	<b>5.- 7pm</b> Social Activity on campus	<b>2.45 - 6pm</b> Excursions- Options include visits to: BBC Parliament Museums		
	<b>7.30 - 10pm</b> Theatre Trip				



# Course Outcomes

From the outset, we will discuss with you exactly what you hope to achieve and focus our attention on meeting those needs.

All participants will be issued with a certificate of attendance. If desired, we can also provide certificated academic assessment at the end of the course, using our own examination, the Brunel English Language Test (BrunELT).



## Testimonials

Since 2005 we have welcomed groups from many countries including China, Taiwan, Saudi Arabia, Oman and France. Our clients have included academics and students, as well as private companies and government organisations.

Here's what some of the participants had to say:

“



I really enjoyed the experience studying with Brunel Language Centre. It not only helped me to improve my English, but also provided a good chance to learn and adjust to a different culture. Teachers there are patient, kind, helpful and cheerful.

**Dong Shi -  
China**

”

“



Studying at Brunel University has been such a great chance for me. The University offers a lot of facilities for students, including a large library, computer labs and free connection to the internet in all the accommodation. Brunel also really respects different cultures, providing Halal and vegetarian meals. It is really a great opportunity that helps students to develop not only academically, but also socially and culturally.

**Ohood Al-Hasani -  
Nizwa University, Oman**

”



# Brunel Campus

In recent years, a £400 million investment programme has transformed the Brunel Campus into a university for the 21st century. Brunel provides some of the most advanced study facilities to be found in London, as well as Olympic-standard sports facilities to ensure that you can fully experience all that life has to offer while you are on campus. A campus-based university, Brunel offers you a safe and relaxed place to study. On campus, you have all the day-to-day amenities you require, a grocery store, bank and cafés as well as a wide range of sports and arts facilities.



## Services and facilities also include:

- 24-hour access to the library with communal area and help desk
- 24-hour computer labs
- Cafeteria serving a wide range of international cuisine (including halal and vegetarian food), coffee shops, sports bar and nightclub
- Single room, on-campus accommodation for 4,500 students and off-campus housing options also available
- Sports facilities, including gym, running track, football pitches, basketball court, badminton, climbing wall (there may be a charge for some of the facilities)
- Arts, including drama, music, dance, recitals and concerts
- Meeting House, open to all for religious and non-religious events and quiet reflection





# Accommodation

With more than 4,500 rooms on campus, you will be joining a vibrant and friendly campus community. From your on-campus room, you are never more than a couple of minutes away from the teaching, social and sporting facilities.

At Brunel, we understand the importance of providing our clients with a comfortable and relaxed living environment. We offer single standard rooms, with a shared bathroom, and en-suite rooms, with personal bathroom, that are well-equipped and come with a communal kitchen.

For more details about the facilities and photos and videos of the halls available, please visit our website:

[www.brunel.ac.uk/life/accommodation/international](http://www.brunel.ac.uk/life/accommodation/international)



# Finance\*

The cost implications for the course can be split into the following three categories:

## Tuition

£250 – £300 per participant per week

## Accommodation



Cost per week	Type of room	
<b>£137.90</b>	<b>En-suite (flat layout) -</b> Private bath/shower room facilities	Single room
<b>£134.75</b>	<b>En-suite (corridor layout) -</b> Private bath/shower room facilities	Single room
<b>£108.15</b>	<b>Standard -</b> Shared bath/shower room facilities	Single room
<b>£206.15 -</b> <b>£242.55</b>	<b>Studio Flats -</b> Private kitchen and bath/shower room facilities	Couples only

## Optional Extra Activities

(e.g. coach tours)

£10 - £100 depending on the types of activities you would like to undertake.

**We would, therefore, expect the total cost per participant per week to be approximately £500**

Please note that these prices are a guide only.

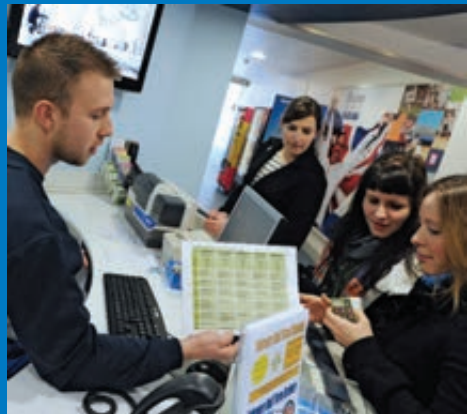


\*prices correct at the time of going to print



# What next?

**Get in touch!** If you would like to enquire about organising a short course at Brunel Language Centre, please email us at [languagecentre@brunel.ac.uk](mailto:languagecentre@brunel.ac.uk). We can then discuss your requirements and provide you with a cost estimate and provisional timetable. Please note that participants must be at least 18 years old.



We would ask that you consider the following questions when making your enquiry:

- What kind of programme are you looking for?
- How many participants?
- What is the current English level of the participants?
- Would they be accompanied by chaperones?
- How long would the course last?
- What time of year?
- Would you be interested in on-campus accommodation?
- Would you need a social programme? At weekends or during the week?
- Would you want a test and/or certificate of completion at the end of the course?



**Brunel**  
University  
London

Accredited by the



for the teaching  
of English in the UK

**Brunel Language Centre**, Brunel University, Uxbridge, UB8 3PH, United Kingdom  
[languagecentre@brunel.ac.uk](mailto:languagecentre@brunel.ac.uk) [www.brunel.ac.uk/international/brunellanguagecentre](http://www.brunel.ac.uk/international/brunellanguagecentre)