



*MSc in*

# BUSINESS SYSTEMS INTEGRATION (WITH SAP TECHNOLOGY)

School of Information Systems, Computing and Mathematics

**Brunel**  
UNIVERSITY  
WEST LONDON

**“Stand out from the crowd with an MSc in Business Systems Integration from Brunel. With the opportunity to gain SAP certification, you will be able to enhance your career prospects in the global IT marketplace.”**



## Fact File

### Mode

Full-time one year  
Part-time two years

### Entry Requirements

A good honours degree.  
See page 4 for details.

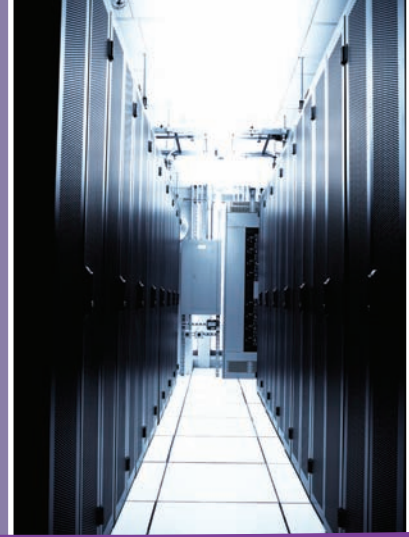
### Enquiries

The Student Recruitment Coordinator,  
School of Information Systems,  
Computing and Mathematics,  
Brunel University, Uxbridge, Middlesex, UB8 3PH

Tel +44 1895 265939 Fax +44 1895 269728

Email [cs-msc-courses@brunel.ac.uk](mailto:cs-msc-courses@brunel.ac.uk)

Web [www.brunel.ac.uk/discpg](http://www.brunel.ac.uk/discpg)



# MSc in Business Systems Integration (with SAP Technology)

## The Masters Approach

Our Masters programmes seek to develop knowledge, creativity and originality in one package – you. Each programme is a framework to help you to develop: a systematic understanding of knowledge; a comprehensive understanding of techniques relevant to your area of study and the key skills associated with critical awareness and evaluation.

## Course Objectives

In an increasingly competitive business environment, organisations need to make disparate software systems work together in a dynamic way in order to support new and innovative enterprise-level business processes. To-date, making systems work together like this has proved to be expensive and time-consuming, with system integration activities often costing significantly more than standard application development.

In response, many organisations and technology providers are promoting a 'service-oriented' approach to integrating systems – both within and across enterprises. The approach seeks to fuse business semantics (definitions that describe the business in a consistent way) and Web services in a way that allows much more flexibility in the development of innovative, enterprise-level business processes. From a global perspective, the purpose is to provide standard definitions and ways of doing things that allows enterprises and parts of an enterprise to act independently but work together.

In this context, the aim of this 'cutting edge' programme is to develop practical skills and critical awareness in relation to the state-of-the-art in business/enterprise systems integration (from a service-oriented perspective). At the end of the course, you should be able to:

- Model key aspects of business in an integrated and logical manner.
- Demonstrate a critical and practical understanding of the issues relevant to business systems integration.
- Demonstrate a critical and practical understanding of Enterprise Resource Planning Systems (ERP) and the role they play in business systems integration.
- Demonstrate a critical and practical understanding of the professional skills necessary for effective business systems integration.
- Reflect, critically and in-depth, on relevant aspects of the state-of-the-art of both the practice and theory of business systems integration.

The practical elements of your course will be supported by SAP technologies. SAP is a leading provider of Enterprise Resource Planning systems and a keen innovator from a service-oriented perspective.

Broadly speaking, you will gain experience of SAP R/3, Netweaver platform and business intelligence approaches. Consequently, you will get hands-on experience of technology and systems that will enhance your employability.

## Course Description

In brief, your studies on the course will cover:

### Professional development and research

This module develops your critical thinking and research skills to help you succeed in business and academic environments. Example topics of study include: learning to learn, approaches to teamwork, approaches to critical evaluation and research methods.

### Business modelling

This module cultivates skills and knowledge related to business, conceptual and software modelling. Example topics of study include different paradigms for modelling (including business services, processes and objects), techniques for modelling the business domain and business behaviour, the relationship between business modelling and software modelling and the use of the Unified Modelling Language (UML).

### ERP systems theory and practice

This module examines the challenges of designing and implementing Enterprise Resource Planning systems. It provides an introduction to SAP R/3 environment and the practice of business process integration within that environment. Example topics of study include enterprise systems strategy and rationale, issues of organisational implementation and business services, processes and functions from an ERP perspective.

### ERP systems deployment and configuration

This module develops the key skills necessary to configure ERP systems for specific business needs. In particular it examines practical aspects of configuration in the context of the SAP R/3 environment. Example topics of study include business process improvement alongside enterprise systems configuration and configuration management.

### Service-oriented architecture

This module examines the approaches and technologies used in the successful implementation of enterprise and web services. Example topics of study include issues in creating and managing a system landscape based on services, architectural approaches to service-orientation and Web service technologies. Practical aspects of Web service implementation are examined in the context of integration via the SAP Netweaver environment.



"I chose to study for the MSc in Business Systems Integration at Brunel because it is renowned for its research practices and excellent teaching facilities. The best part of the course is that it provides comprehensive knowledge along with hands-on experience of how to achieve successful IT integration in organisations. The modules have also helped me focus on the specific areas in which I would like to specialise. "

Jai Shankar

### Data management and business intelligence

This module examines the nature of business intelligence and its implementation via technology. Example topics of study include issues in data/information/knowledge management, approaches to information integration and business analytics. Practical aspects of the subject are examined in the context of the SAP Netweaver and Business Warehouse environment.

### Systems project management

This module examines the challenges in information systems project management. Example topics of study include traditional project management techniques and approaches, the relationship between projects and business strategy, the role and assumptions underpinning traditional approaches and the ways in which the state-of-the-art can be improved.

### Business integration

This module examines the issues of integrating people, process and technology both within organisations and organisational networks. Example topics of study include: the dimensions of business integration, collaborative working and its issues, virtual organisations, electronic markets and commerce policy.

### Dissertation

Your dissertation is an opportunity to showcase your project management and subject specific skills to potential employers, and also serves as valuable experience and a solid building block for those wishing to pursue a PhD on completion of their MSc. You will be encouraged to critically examine the academic and industrial contexts of your research, identify problems and think originally when proposing potential solutions that serve to demonstrate and reflect your ideas.

## Course Structure

The programme of study may be taken either as full-time over one year, or as a part-time over two years. As a full-time student, the taught part of the course is delivered across two terms (autumn and spring). Dissertation work will begin in your third term (summer), to be submitted at the end of 12 months of study. As a part-time student, the taught part of your course is delivered across four terms (autumn and spring of each year) and your dissertation work will begin in the summer term of your second year, to be submitted at the end of 24 months of study. It is our policy to ensure that, where possible, part-time student attendance at the University for taught elements will be on one day a week only.

## Why Study for an MSc in Business Systems Integration (with SAP Technology)?

An MSc in Business Systems Integration from Brunel combines the key theories and concepts in business systems integration with hands-on experience of the market-leading business management system. This gives our students the edge in the employment market, as potential employers, whether they are large enterprise SAP users or consulting firms with major SAP practices such as Accenture or IBM, are impressed by our graduates' ability to draw on real SAP knowledge.

At Brunel, we take this further and as an integral part of the course, students will also have the opportunity to obtain SAP certification. This will enable them to jump-start their careers, gain a competitive advantage and enhance their credentials.

## Who is the Course Aimed At?

The course is aimed at graduates in subjects that have either included some ICT component or where relevant ICT experience has been developed thereafter. The programme is therefore open both to those who have recently completed an undergraduate degree and to professionals with relevant experience.

## Career Prospects

This course will equip you to work in areas such as:

- Business analysis
- Business process management
- ERP implementation and customisation
- Systems integration and support
- Technology-led change management

# Entry Requirements

You should normally have a good Honours degree (or overseas equivalent qualification) and be motivated to develop a reflective understanding of the theory and practice of this complex and exciting subject area. A computing-related background may be advantageous to your application, but is not a strict requirement. If you have alternative qualifications and/or relevant industrial experience, you may be eligible to study on the course. In this case, we will interview you and may ask that you do some preparatory work for the course.

## Course Fees

Course fees are revised annually. For the most up-to-date information, please visit [www.brunel.ac.uk/courses/pg/pgfees](http://www.brunel.ac.uk/courses/pg/pgfees).

## How to apply

Applications should be made as early as possible, and in any case by early September, on form AR2. You can obtain a copy by emailing [cs-msc-courses@brunel.ac.uk](mailto:cs-msc-courses@brunel.ac.uk) or directly from the Brunel website at [www.brunel.ac.uk/courses/pg/applications](http://www.brunel.ac.uk/courses/pg/applications).

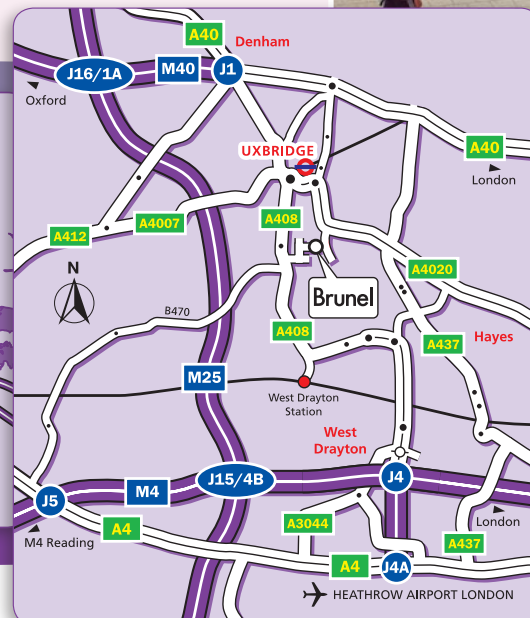
All completed forms must be sent to:  
The Postgraduate Admissions Office  
The Registry, Brunel University, Uxbridge, Middlesex UB8 3PH.

Forms must be accompanied by original certificates or certified copies as proof of the qualifications held (except in the case of Brunel graduates), including proof of ability in English Language if English is not your first language.

## Further Information

The Student Recruitment Coordinator,  
School of Information Systems, Computing and Mathematics  
Brunel University, Uxbridge, Middlesex, UB8 3PH

Tel +44 1895 265939  
Fax +44 1895 269728  
Email [cs-msc-courses@brunel.ac.uk](mailto:cs-msc-courses@brunel.ac.uk)  
Web [www.brunel.ac.uk/discpg](http://www.brunel.ac.uk/discpg)



## Where to Find Us

Every effort has been made to ensure the accuracy of the information in this brochure and the University will take all reasonable action to deliver courses and services in accordance with the descriptions set out in it. A contract is made at the point when an applicant accepts an offer from Brunel, meeting any conditions, and the acceptance is communicated to Brunel or the clearing system acting for Brunel, and this contract is confirmed. All students are required, as a condition of registration, to abide by and submit to the University's statutes, ordinances, regulations and rules, which are published on the University's website.

131971 0608

School of Information Systems, Computing and Mathematics

**Brunel**  
UNIVERSITY  
WEST LONDON