

# Approaches to Online Assessment

by a Specialist Art, Design and Media Institution

approach

Project = Q&S + Registry +  
MIS + IT



wiseFlow





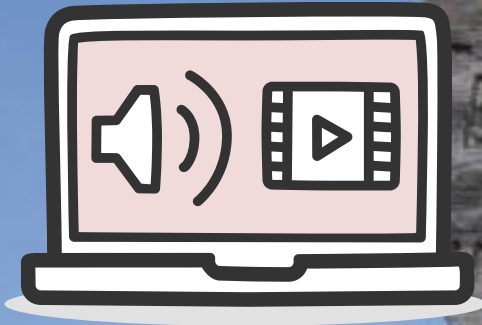
**submission = coursework**

**object – image – performance  
– audio – video – written...**





pre-plan with academics



A glass funnel with a yellow liquid inside is placed over a flask containing a clear liquid. The background is a blurred indoor setting with a window showing greenery. A blue banner is at the top left.

**preparation**

**data cleanse (SITS)**





**SITS (import/export)**

submissions

best practice: academics  
guide students








# Registry issues summary of submission activity



**assessment**

**Unit Leader responsible  
for mark entry**





**supporting academics –  
‘view only’ role**



**continue to use existing  
feedback sheets**





**feedback**

**Faculty Offices  
upload feedback**



**Registry check & release  
marks/feedback**



A close-up photograph of a woman with long, wavy blonde hair. She is wearing a white top with a colorful floral pattern. In her right hand, she holds a black smartphone, looking down at the screen. In her left hand, she holds a clear plastic cup filled with a cold, iced coffee beverage, topped with a clear lid and a black straw. The cup is condensation-covered. The background is blurred, showing wooden slats, possibly from a chair or bench. The text "email notification" is overlaid in the center of the image.

**email notification**

**issues**

**monitoring physical  
AND digital**





A male conductor in a dark suit is shown from the chest up, holding a baton in his right hand and gesturing with his left hand. He is looking towards the right side of the frame. The background is dark and out of focus, showing the silhouettes of an orchestra. The text "coordinating people and processes" is overlaid in white, bold, sans-serif font across the center of the image.

**coordinating people  
and processes**

A scene from the TV show 'The Office'. Kelly Kapoor is sitting at her desk, looking at a folder held by Steve Moss. She has a surprised or questioning expression. The background shows office blinds and a computer monitor. A red juice box is on the desk.

**system (in)capability:  
e.g. double components**



A close-up photograph of several interlocking brass gears, likely from a mechanical watch movement. The gears are highly detailed with visible teeth and are set against a dark, blurred background. A semi-transparent blue rectangular box is positioned in the upper-left corner of the image.

**future**


**increased integration**

# reporting

Check  
Check



List of files handed in

 My incredible review.pdf  
380.4 kB

rubrics

Rubric

LO1: Demonstrate your development of imaginative, innovative and technical skills in the solution of

Weighting: 33%

0-29	30-39	40-49	50-59	60-69	70-79	80-100
No or little ...	Partial evid...	Evidence t...	Evidence t...	Evidence t...	Evidence t...	Evidence t...

B

I

U

≡

≡

Your work shows evidence of good technical understanding...|

LO2: Demonstrate appropriate research and critical reflection, articulated in discussion and your lo

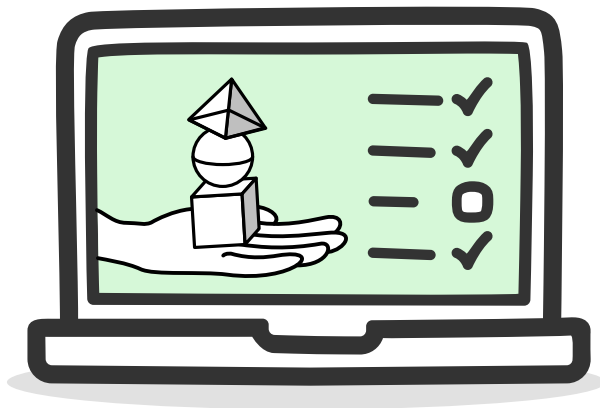
Weighting: 33%

0-29	30-39	40-49	50-59	60-69	70-79	80-100
No or little ...	Partial evid...	Evidence t...	Evidence t...	Evidence t...	Evidence t...	Evidence t...

Approve the rubric in order to register the assessment

2/3

Approve rubric



WISEflow

Ann Other ▾

ParticipantAssessorReviewerManager

Physical Hand-in

EditDeleteCopy

12/01/2017 12:00 PM12/15/2017 12:00 PM12/16/2017 12:00 PM12/30/2017 12:00 PMEarly assessment access: --

Required Items

These are the flows to which the participants have been added and on which they must fulfill the requirements to be transferred to the final flow.

SculptureJournal

Final assessment

This is the final flow to which participants who meet the requirements can be transferred.

Marks & Feedback21

Notify participants

Send out a notification to all participants about their qualification status as of today.

Add participants to assessment

Participants who meet the overall requirements can be updated on the final flow or be exported to an external system.

digital tick

appear on each flow. The  
in the column of each flow.

Export to CSVManual exemptionEdit

First name(s)	Last name	Sculpture	Journal	Evaluation	Presentation	All items?
baarc	BA ARCHITECTURE Test Account	✓	✓	✓	✓	✓
baact	BA ACTING Test Account	✓	✓	✓	✓	✓
baanp	BA ANIMATION PRODUCTION Test Account	✓	✓	✓	✓	✓
baacph	BA COMMERCIAL PHOTOGRAPHY Test Account	-	-	-	-	-
baacss	BA COSTUME AND PERFORMANCE DESIGN Test Account	-	-	-	-	-
baaep	BA CREATIVE EVENTS MANAGEMENT Test Account	✓	✓	✓	✓	✓
bafsc	BA FASHION Test Account	-	-	-	-	-
bafilm	BA FILM PRODUCTION Test Account	-	-	-	-	-

this FLOWseries and appear on each flow. The  
requirements can be seen in the column of each flow.

Export to CSVManual exemptionEdit

First name(s)	Last name	Sculpture	Journal	Evaluation	Presentation	All items?
baarc	BA ARCHITECTURE Test Account	✓	✓	✓	✓	✓
baact	BA ACTING Test Account	✓	✓	✓	✓	✓
baanp	BA ANIMATION PRODUCTION Test Account	✓	✓	✓	✓	✓
baacph	BA COMMERCIAL PHOTOGRAPHY Test Account	-	-	-	-	-
baacss	BA COSTUME AND PERFORMANCE DESIGN Test Account	-	-	-	-	-
baaep	BA CREATIVE EVENTS MANAGEMENT Test Account	✓	✓	✓	✓	✓