



Brunel
University
London

Electronic Management of Assessment:

Developing EMA in WISEflow

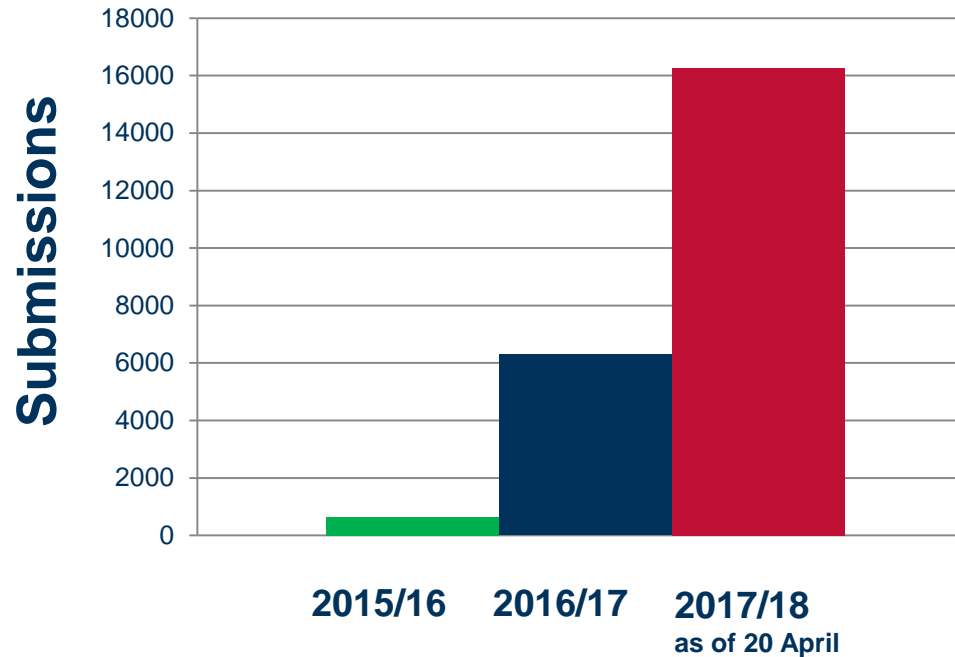
Mariann Rand-Weaver

Pro-Vice Chancellor (Education)



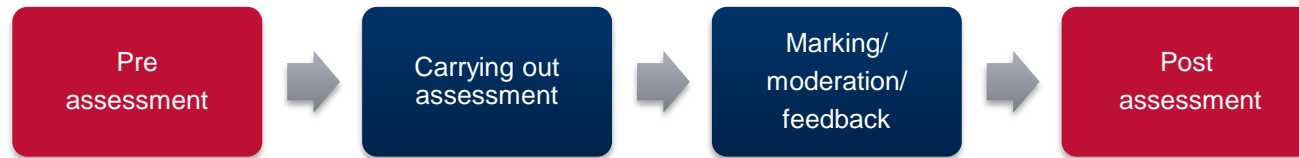
Context

- 23,706 submissions in



- Changing how we work.....

We are not using full capability of system....



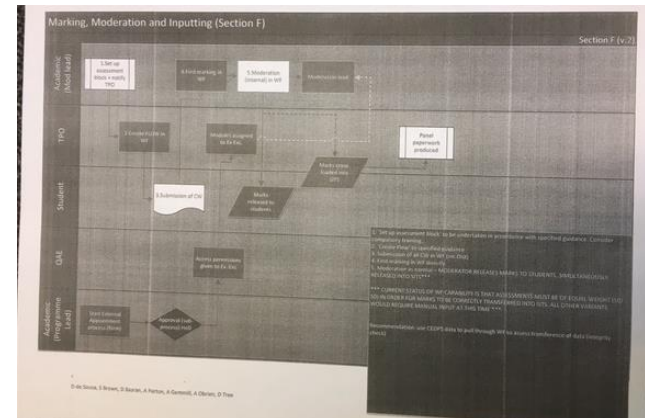
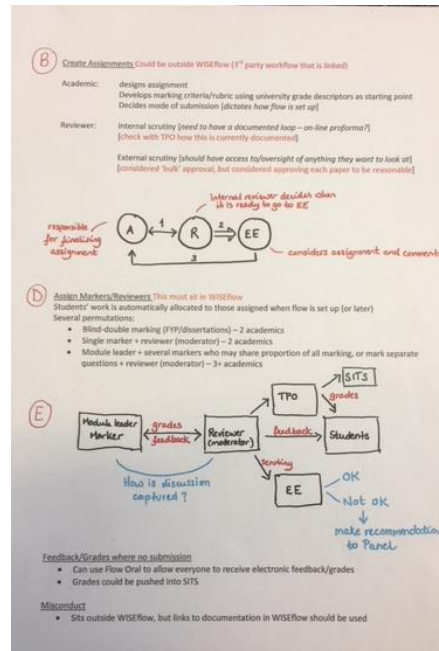
- **Workshop March 2017**
 - similar assessment processes across the sector
- **Electronic Management of Assessment**
 - re-thinking assessment administration

EMA Group

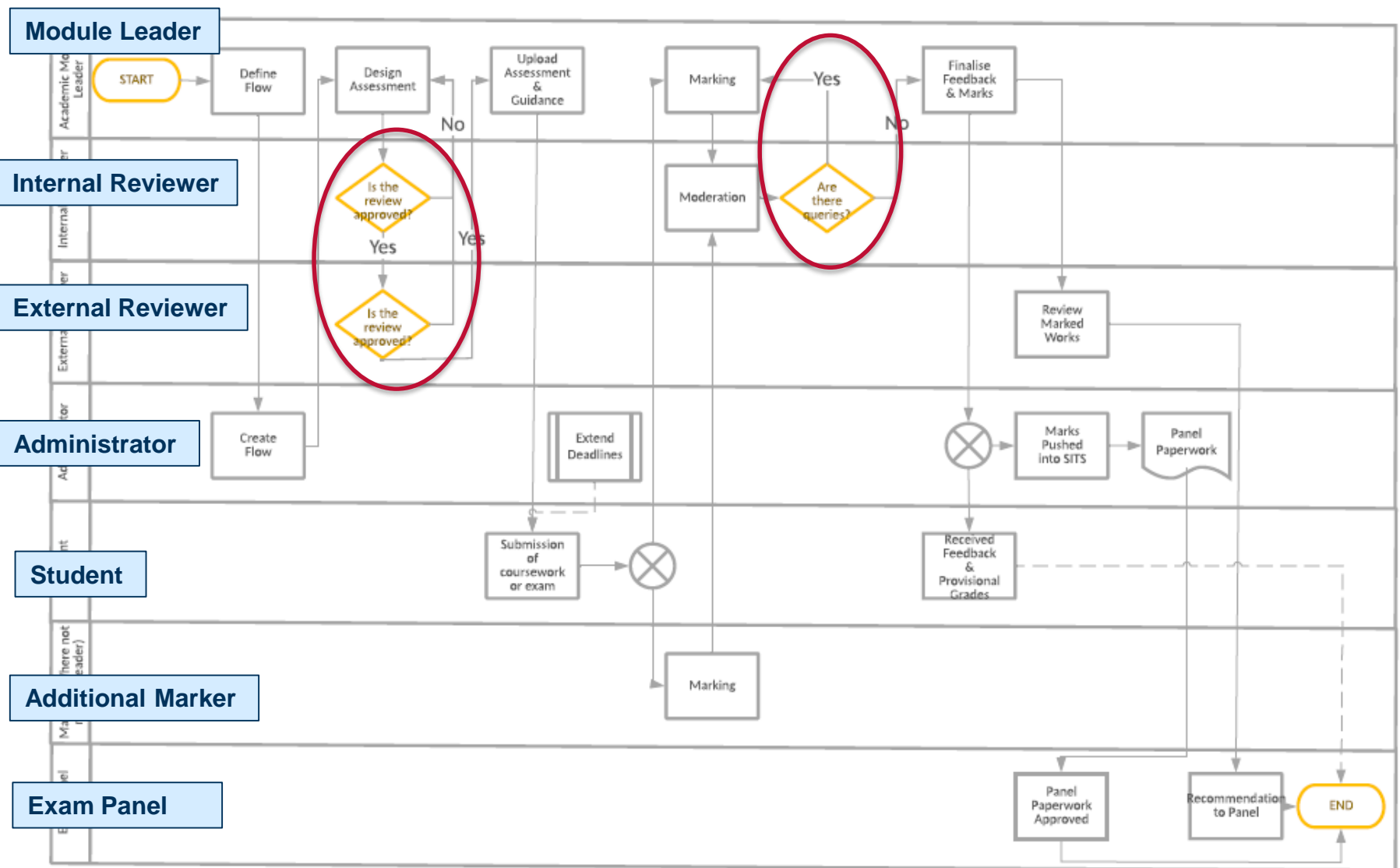
- **Established July 2017**
 - *Academic (2), professional (4), administrative staff (5)*
- **Workshop 1 Nov 2017**
 - *Detailed process mapping*



- **Workshop 26 Feb 2018**
 - *Creating new process*



Assessment Process



Who benefits?

Existing

New

Module Leader	Produce exam questions and indicative answers	Mark exam scripts	Collate marks and fill in spreadsheet	Finalise marks	Give feedback				
	Define flow	Produce exam questions and indicative answers	Upload assessment	Mark exam scripts	Finalise marks	Give feedback			
Internal Reviewer	Review and comment	Moderate marking (or second mark)	Discussion with marker						
	Review and comment	Moderate marking (or second mark)	Discussion with marker						
External Reviewer	Review and comment	Review a selection of marked scripts							
	Review and comment	Review a selection of marked scripts							
Administ rator	Produce exam paper	Send exam paper to external examiner	Finalise exam paper and store securely	Take exam paper to venue	Walk exam script back fro venue	Distribute questions for marking	Enter marks into SITS	Send scripts to external examiners	Produce Panel paperwork
	Create flow	Push grades into SITS	Produce Panel paperwork						
Student	Take exam	Receive feedback							
	Take exam	Receive feedback							

Efficiencies

- **Exam Book Costs**
 - *Savings of ~£3000 this year*
- **Administrators do fewer manual tasks**
 - *Time can be spent supporting students*
- **Paper use reduced**
- **Standardised process**
- **Postage/courier costs reduced**

What next

- **Finalise process with UNlwise**
- **Share with stakeholders – aiming for 2018/19 implementation**
- **Consider using WISEflow for submission and distribution of PhD thesis**
- **Assessments that cannot be conducted digitally – use WISEflow for the administration?**



13 Jan 2016