

Scaling Multiple Choice exams using WISEflow

Experiences from University College Copenhagen

Mia Mørkeby Johnsen
Special Advisor
Student Services

April 26th 2018



Facts about the University College Copenhagen

- 1 March 2018, the university colleges formerly known as UCC and Metropolitan University College merged
- 20,000 students
- 2000 employees
- 21 Bachelor's Degree programmes e.g. Nursing, Education, Social Work, Physical Therapist (study start semi-annually)
- 40 Diploma Degrees and Academy Profession Degree programmes and postgraduate studies (study start all year)
- 5 locations in Copenhagen and 3 more in the capital area



Assessment
was carried out
by hand

2013

All University
Colleges in
Denmark are
using the same
system

2018

Analog

IntraPol LMS

WISEflow

WISEflow

2012

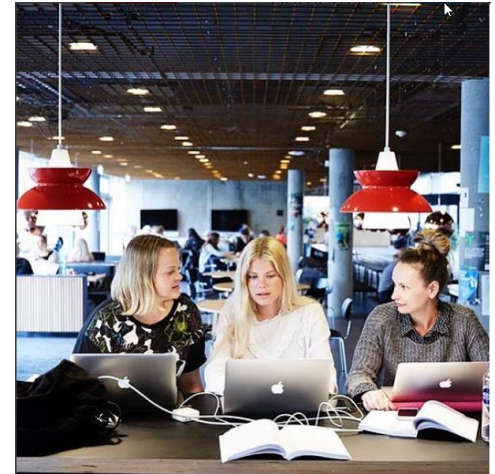
Board Decision:
No more
printing
assignments.

2016

Merge
- one way of
using the system

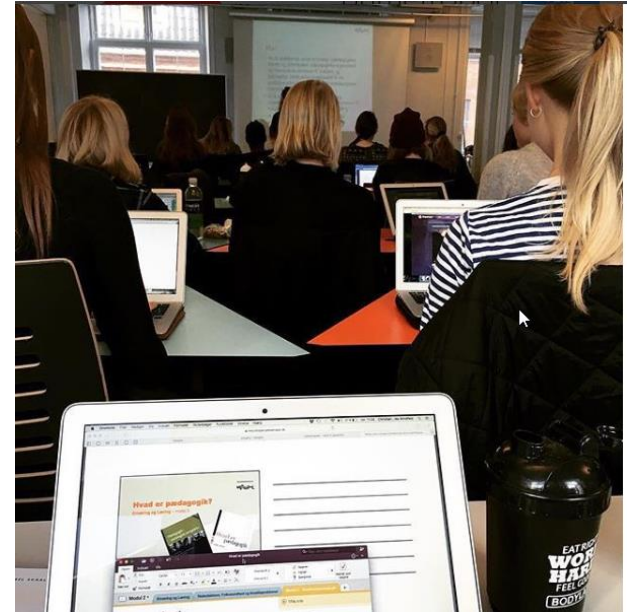
Facts about digital exams

- We use WISEflow for both handing in assignments, multiple choice exams and oral examinations.
- All assessors log in to WISEflow and give marks
- Exams all year but mostly in June and January
- Approx. 20,000 digital exams in WISEflow in 2017
- Approx. 11,000 digital exams in WISEflow so far in 2018
- Since October 2016, 3200 students have participated in a Multiple Choice invigilated exam with LOCK
– 900 on the same day in December 2017

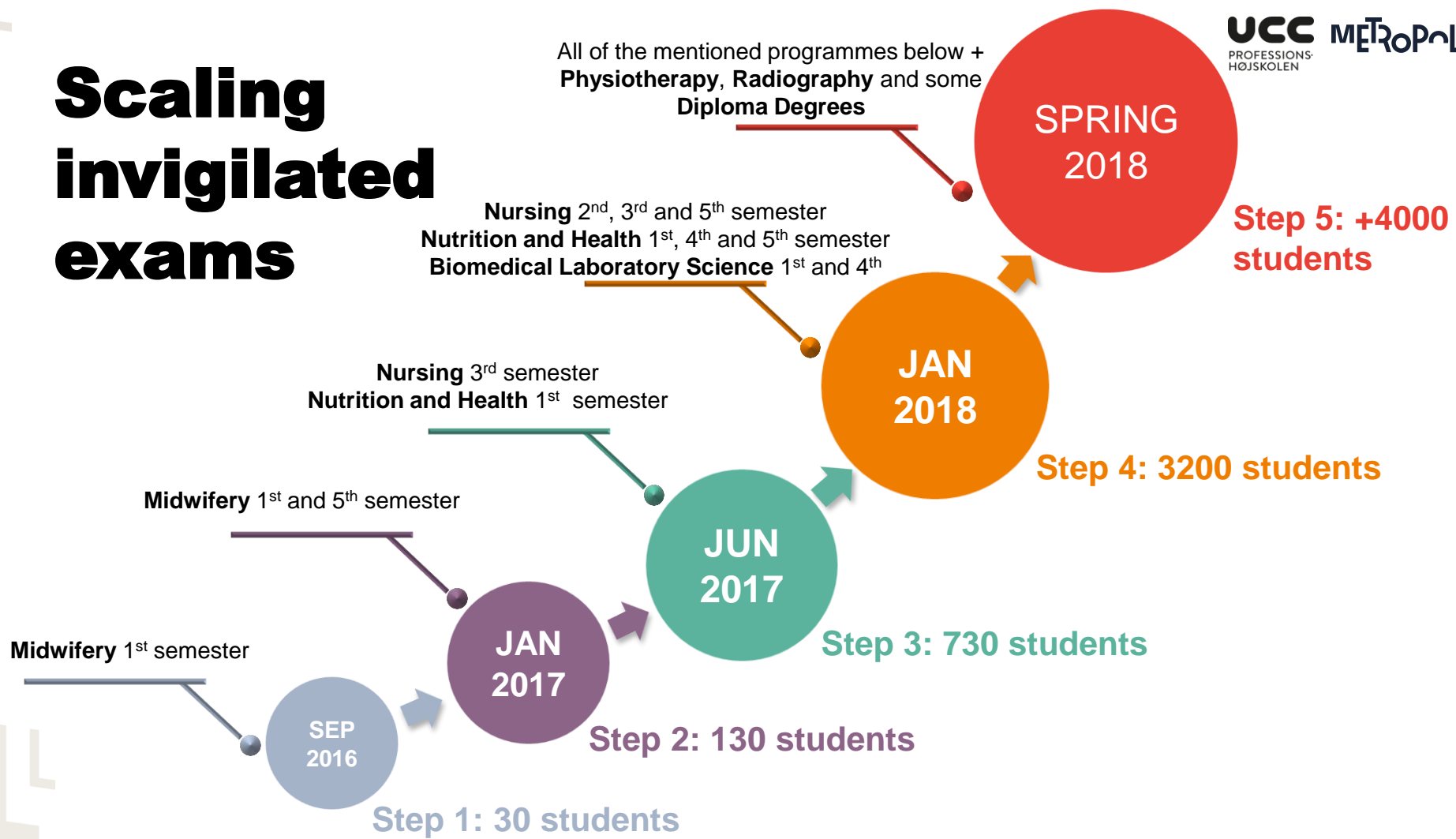


Invigilated Multiple Choice (MC) exams

What and how did we do?



Scaling invigilated exams



01 MAKING THE PLAN

Meetings with Head of Programmes, Learning professionals, Administrative Employees etc. planning what, when and how - and showing the options

Designating the right people and time e.g. authors and invigilators

Information for students

1. NEWS in our LMS telling something's up
2. Instructional e-mail addressing how to log in to WISEflow, how to use demos and how to download LOCK browser. Info about support
3. DEMO-session in their schedule

02 SET UP THE EXAM

Workshops for authors: learn how to set up (Multiple Choice) tests in WISEflow (2 hours)

Authors work – setting up their tests

Authors publish the test

Managers create FLOWmulti and apply the Multiple choice test, students and assessors

03 DEMO SESSIONS

Small sessions with around 50 student at a time carried out by me and their lecturer

45 minutes

1 month -1 one week before the exam

3 purposes:

1. Help and support installing and testing the LOCK browser
2. Simulating the exam
3. Questions about WISEflow and the exam

04 EXAM DAY

Students arrive 15-30 minutes before the exam starts – login to WISEflow and await the “count down” clock

Passcode handed out in the room by the exam responsible

Invigilators must be skilled IT-users and not afraid to enter “manual settings”

Easily carried out in auditoriums with +500 student from different programmes with different tests at the same time

05 ASSESSING

Point based assessment or manual assessment (essay answers)

Assessors need to view the statistics

Only a few assessors

Any hurdles?

Student's perspective

- WIFI must be stable under exam
- Using LOCK: Anti-virus systems, system and browser requirements
- BYOD – what if students' devices don't comply to the system requirements?
- 3% had system requirement issues

Assessor/author's perspective

- Changing the way they work
- Not really assessing – more viewing statistics?



Assessor

"The navigation was difficult for me - how to keep the overview while assessing the MC test. I couldn't figure out how to add more points for the essay-parts. Or how to use the point based assessment and to set and save the final assessment ...When I finally found out, I saved a lot of time assessing – and it was great with the statistics!"

Student

"It was easy to use and I felt save taking the test. Very user-friendly in the Multiple Choice section: Great feature that I could "flagmark" questions, I would like to return to. Easy to jump between questions. It was nice to have time to hand in after the test was ended."

Questions



Contact

Mia Mørkeby Johnsen

Special Advisor and Project Manager of the Digital Exam and WISEflow Project

LinkedIn Profile: <https://www.linkedin.com/in/miamoerkeby/>

Direct: +45 24296372

mimo@phmetropol.dk

How is WISEflow in general evaluated?

Assessor perspective (n=833)

- Easy to login (77%), easy to grade (85%) and nice to have everything in the same place
- Some assessors are still printing assignments (not MC) – others loves the assessor tool (65/35%)
- Difficult to find additional material (15%)

Student perspective (n=1622)

- Easy to login (78%) and to upload assignment (81%)
- Nice with demo-session before MC (83%)
- Difficult to find exam plan (12%)

Do you feel you have more or less tasks regarding the exam using WISEflow?

