

Brunel Medical School

Frequently Asked Questions

2023/24 entry

July 2022

Brunel Medical School

Authored by: Emily Griffiths



Brunel
University
London

Brunel Medical School

Application Process

What is the overall application process?

The Brunel Medical School (BMS) MBBS programme is currently open to international students only, it is our aim to open our admissions to home (UK) students at the earliest opportunity. We accept applications via UCAS or directly through our website.

Applications for the 2023/4 entry will open directly and via UCAS on 5 September 2022. Our direct applications will remain open until all Medicine places have been filled.

Due to high demand, we encourage you to make your application as early as possible. This may increase your chances of an early interview and, if successful at interview, an early offer.

A brief overview of the application process

Stage 1: Initial application assessment by Brunel University's Admissions Team

An initial assessment of applications (including those via UCAS and those made directly to Brunel) will be made by the Brunel Admissions Team. Applicants who meet the general requirements and minimum entry requirements for admission have their application advanced to Stage 2

Stage 2: Application assessment by BMS Selection Panel

Applicants will be assessed by the BMS Selection Panel, who will review the personal statements and the references against pre-determined criteria as described below.

Applicants are then ranked according to applicants' UCAT scores. Students with the highest UCAT scores will be invited to interview until all interview slots are filled.

Applications without UCAT

Applicants who have not obtained an UCAT score in the year preceding the year of entry will have their personal statements and references reviewed and will be ranked based on achieved or predicted academic grades.

The highest ranked applicants will be invited to interview once all passing UCAT applicants have been interviewed, and if there are any Medicine places still available.

Stage 3: Virtual Multiple Mini Interviews (vMMIs)

There will be 3 series of vMMIs taking place in **December, February and March**. An additional series of interviews may take place later in the cycle if places are still available. The highest ranked applicants from Stage 2 will be invited to interview. vMMIs will be a series of 6 mini-interview stations, each lasting 5 minutes and designed to assess an attribute, blueprinted to Good Medical Practice. Candidates are marked on their performance in each of the 6 stations and their final score will be the sum of those marks.

Stage 4: Offers

After each vMMI series, applicants will be ranked according to their interview final score and offers will be made to the top-ranked candidates. Applicants who are not selected for offer but who performed well will be placed on an Offer Waiting List. Offers will be made in rank order to Offer Waiting List applicants when a vacancy becomes available.

Stage 5: Post-offer requirements

Offers will be made conditional on meeting both academic and non-academic requirements. A deposit of £10,000 is required no later than 24 May 2023 and will secure your place on the MBBS course, subject to other requirements being met. All conditions of your offer will be on your offer letter and on your My Applications Portal (this is a webpage where your application will be stored once it is submitted. The Portal gives you access to your application documents, to your offer letter and to the latest updates regarding your application).

What should I include in my application?

Submission of application

- ❖ Applications are assessed against both academic and non-academic criteria so please make sure your application has all the required documentation on submission. Missing documents will slow down the process.

Key parts of the application are:

- *Predicted or achieved grades from your highest academic qualification, with transcripts if available*
 - *Personal statement*
 - *Reference*
 - *UCAT certificate or UCAT Number*
 - *Any English qualification you currently have. Meeting the English requirements will be a condition of your offer if progressed*
- ❖ Your personal statement is an important document which you are expected to write on your own. We shall be looking for indications that the statement is personal, true and written in a way that only you could write. You should demonstrate how your experience, skills and attributes are relevant to the core

attributes and values expected of medical students.

- ❖ If you are currently in education your referee should be an academic in your school or college. If you are no longer in education your referee should be a manager or colleague who can speak about you and how you possess the core attributes needed to study Medicine. The reference cannot be written by a family member or partner. We expect the people writing or contributing to your reference to have known you for a period of 6 months or more so that they will have had time to evaluate your qualities. We may contact your referee if more information is needed.
- ❖ More information on what to include in your personal statement and reference is on page 10 and 11.
- ❖ If applicable, please put any disability information in your application information so that the school can make reasonable adjustments to facilitate the interview process. Disability information will not hinder your application in any way, nor will it be used in the decision-making process. Further, only selected administrative staff will have access to this information. It will not be made available to the interview assessors or to the academic selection staff within the BMS Admissions Team.

Are my GCSEs considered in the ranking process? Is it just my academic qualifications that are used for the selection process for interview?

BMS does not currently use GCSEs as part of the ranking process, however you will need to meet the GCSE Math's requirement of grade B (5) (or equivalent).

Your predicted/achieved academic qualifications are used in the selection process and your personal statement and reference will be reviewed against pre-determined criteria.

Can I apply to 4 UK Medical Schools via UCAS and then apply to BMS directly? Or should I include BMS in my 4 UCAS choices? Is there any advantage?

You can apply directly or via UCAS. Direct and UCAS applications are pooled together and treated in the same way. Your application will be ranked according to your academic qualifications.

Your application will be processed via UCAS when your offer becomes unconditional, so if you already have a UCAS account with a choice of offers, you will need to forgo other offers if you wish to retain the offer from Brunel Medical School.

Can I apply if I'm under 18?

We normally require applicants to have reached the age of 18 by the 25 September 2023.

What does the interview look like?

Interview process

Applicants who successfully make it through assessment from the BMS Selection Panel and those with academic rank is sufficiently high will be asked to attend a Multi Mini Interview (MMI). These will be conducted online via the Practique software web-portal. You will not need to download any app or software, but you will need a laptop or tablet computer and reliable access to the internet.

Candidates will take part in 6 scenario-based mini interviews lasting approximately one hour overall to examine different attributes for becoming a doctor. You do not need to study for the interview as we shall not be asking academic questions, but focus on your response to a variety of hypothetical scenarios. You may find that learning about the MMI process online is useful, and you may wish to practice your interview skills with friends or family. [More information about MMIs.](#)

Some things to be aware of before the interview:

- ❖ No applicant will be made an offer without an interview
- ❖ All applicants invited to interview must complete a criminal conviction disclaimer - this will be available on your eVision application portal as soon as you have completed an application. If you do not complete this before your interview you may not be able to attend
- ❖ Applicants are ranked after each series of interviews (December, February and March). Applicants with the highest score are made offers, those who performed well but were not selected for offer will be put on an Offer Waiting List and those who do not meet the cut-off score will be rejected
- ❖ Those on the waiting list may be made an offer later in the cycle depending on available places

Are there any other requirements except my grades and English language?

Professional course requirements

- ❖ All successful applicants must complete the required occupational health checks that are detailed on

your offer letter, which will include immunisations and a medical questionnaire. These need to be completed before registration.

- ❖ As this is a professional course there are other requirements you will need to complete before registration. This will include a Disclosure and Barring Service (DBS) check and a Criminal Record Declaration form and we will check your name against the excluded students database with more information - (**Fitness to Practise concerns arising during Admissions process | Brunel University London**). These must be completed before registration.
- ❖ More information on professional course requirements such as immunisations can be found on our dedicated webpage - **Professional course requirements | Brunel University London**

Deposit

- ❖ Offer holders are required to pay a £10,000 deposit to secure their place on the programme (subject to meeting other conditions) by 24 May 2023.

**dependent on date of offer, if you receive an offer please check your offer letter*

Unconditional offers – what next?

Preparing for Medical School and the UK

Once you have decided to accept your unconditional offer to study Medicine in Brunel Medical School, there are a number of important issues that you need to address. Some of these are listed below, and the sooner you deal with them, the smoother the process will be. Do not leave these issues to the last minute as you may jeopardise your place in Brunel Medical School.

Accommodation

Choosing the right accommodation is very important and you should research this once you have received your offer.

All students are guaranteed accommodation for the full 5 years of the course. When you are unconditional you can make an application for your accommodation through the website.

We strongly recommend you choose accommodation on campus. All of our halls of residence are less than a 10 minutes' walk from our teaching, sport and social facilities.

Our accommodation comprises of a single bedroom, free WI-FI, a shared communal kitchen and laundry

facilities. Nearly all our on-campus rooms are en-suite (private bathroom).

All halls have an electronic door system and CCTV, and for peace of mind we have a 24-hour security team.

For more information on accommodation and how to reserve your room please visit the accommodation page - [Accommodation | Brunel University London](#).

Please note that first choice accommodation is not always guaranteed.

At present the Brunel University on campus accommodation does not cater for students coming with partners or families. We recommend using rightmove who can help find student friendly accommodation - <https://www.rightmove.co.uk/student-accommodation.html>, there is a whole range of flats and houses in the local area for all different types of needs.

Visa application

Once your offer is unconditional a Confirmation of Acceptance to Study (CAS) will be issued 3 – 6 months before the course start date.

We recommend you read up on the government rules for getting a Student Visa to study in the UK, the UK Government website provides lots of advice on applying for your visa - [Student visa - GOV.UK \(www.gov.uk\)](http://www.gov.uk). You will not be able to register or start your course without a valid Student Visa - if your visa is delayed, you will not be able to start the course.

Please read carefully the documents you will need to provide to the UKVI - Brunel University London have no control over the UKVI's decision to offer you a visa or not and you must tell us immediately if your visa is refused.

Clubs and societies

Brunel University London offers a large number of clubs and societies for students to join to help make friends, continue with their hobbies or discover new ones, or feel closer to home by meeting other students from your part of the world.

All information on societies is here - <https://brunelstudents.com/societies/>

All information on sports clubs is here - <https://brunelstudents.com/sportsclubs/a-z/>

How much should I budget for living expenses each month?

When applying for your Student Visa you will need to show that you can afford living costs of £1,265 for each month of your course.

Roughly students should budget between £785 - £975 per month depending on their lifestyle.

Do I have to pay the full year's tuition at once or can I pay in instalments?

Payments are made throughout the year. 40% at registration (inclusive of deposit), 30% in January and 30% in

March.

Early Payment Discount

All students who are responsible for paying their own course fees in full, and who pay the full amount of fees due at or before their scheduled date of registration, may receive an early payment discount of 2% on the net course fee i.e after the application of any other discounts to which they may be entitled

General course information

Has the MBBS course received approval from the General Medical Council?

The GMC is the professional regulator for UK Primary Medical Qualifications, and will quality assure Brunel's 5-year Medicine MBBS course with the goal of approval to award Primary Medical Qualifications. We are working closely with them to ensure our medical education and training will prepare you to deliver high-quality care throughout your career. The GMC has started this process and will follow the first cohort from registration to graduation, taking the form of a year-by-year review of our learning and training environments.

During this period of close review, the GMC requires all new medical schools to have a contingency school to partner with the new school and provide regular support. The University of Buckingham Medical School is Brunel Medical School's contingency school.

Brunel Medical School has gained General Medical Council (GMC) approval to recruit students for 2022 entry.

The list of UK Medical Schools under GMC review can be found [here](#).

I am not planning to stay in the UK after graduating from Medical School and will return to my home country. What support do you offer to help me qualify as a doctor?

Brunel Medical School's Careers Advisor will guide you from the start of your medical studies, whether you intend to enter the UK Foundation Programme or return to your home country after graduating. We will help you in researching and understanding the requirements for practising medicine in your country. We will work with you to identify additional resources and support you may require to meet the requirements.

We recommend you research your own country's requirements before confirming your place with Brunel Medical School.

Personal Statement

Your personal statement is an important document which you are expected to write on your own. We shall be looking for indications that the statement is personal, true and written in a way that only you could write. You should demonstrate how your experience, skills and attributes are relevant to the core attributes and values expected of medical students (Medical Schools Council, 2019).

Please note that if you refer in your personal statement to a disability or health condition, this will not have an impact on the selection decisions made.

Your personal statement should be a maximum of 750 words and include the following:

- ❖ Why you want to become a doctor and how your experiences have motivated you to study medicine.
- ❖ Work experience, with dates; this should include a caring or service role, such as paid employment for a healthcare organisation, volunteering for a community organisation or caring for a family member. Focus on what you have gained from these activities in terms of your personal development and insights into a caring profession
- ❖ Demonstration of a realistic understanding of the role of a doctor; this may be achieved through reflection on direct observation of healthcare, with dates (also referred to as 'shadowing' or 'clinical work experience'). We recognise that the opportunities for this type of work experience may be limited, and particularly challenging during the Covid pandemic. As an alternative, you may give an account of your exploration of available information and how this has contributed to your understanding of the role of a doctor.
- ❖ Evidence of your leadership, teamwork and communication skills. You should provide examples of activities and roles you have undertaken (this may be at school, college or in your local community), with dates.
- ❖ Interests and achievements beyond your studies - life is not just about studying. These could include enterprise, socialising, travel, sports, the arts or any other activities that are important to you. Reflect upon the impact of these activities on your personal development and work/life balance and consider how they may enhance your contribution to medical school and/or university life.
- ❖ Evidence that you have a realistic understanding of the demands of medical school, and a medical career, in particular the physical, organisational and emotional demands.
- ❖ Any extenuating circumstances you have faced, and how these have been overcome.

Reference

This document provides guidance on your reference. Your reference will be used in the selection process as one of the criteria used in selecting for an interview. Your referee must not be a family member. Please note that we may seek further information from your referee if clarifications are required or if the information provided is incomplete. **We encourage you to share this guidance with your referee.**

If you are currently in school or college your referee should be a head teacher, head of year, form tutor, or a designated individual in your institution. If you are in university or you have completed a university qualification, your referee should be an academic supervisor.

We recommend that your referee is familiar with the core attributes and values expected of medical students (Medical Schools Council, 2019). Your referee should state how long they have known you and in which capacity. We expect the people writing or contributing to your reference to have known you for 6 months or more so that they will have had time to evaluate your qualities. They should state whether the information contained in their reference relates to conversations with a third party, or are first-hand accounts. Description of the referee's organisation is not generally useful. However, descriptions or achievements that may be relevant in a medical school context are welcome, as well as comments on the qualities you will bring to the medical school.

The areas for which we require information are:

- ❖ Academic ability commensurate with the requirements of a medical school.
- ❖ Ability to work hard under pressure.
- ❖ Ability to maintain a mature and responsible approach to work and a sustained work-life balance.
- ❖ Attributes of conscientiousness, integrity, humility, kindness and empathy.
- ❖ Ability to work in teams and communicate effectively.
- ❖ Commitment to, or a passion for a medical career and medical studies.

In addition to the above, the reference should include any extenuating circumstances which may affect (or have affected) your academic performance or any other aspect of the information contained within your application.

Brunel Medical School takes dishonesty during the admissions process very seriously, and any evidence of dishonesty in relation to your reference or personal statement may result in your application being rejected or an offer of a place being withdrawn.

Are there scholarships available?

A total of 5 scholarships are being awarded for September 2023 entry.

The scholarships are worth over £30,000 each over the duration of the course. Each scholarship has a total value of 15% of the annual tuition fee across the duration of the 5-year course, i.e. 15% of year 1 tuition fee in year 1, 15% of year 2 tuition fee in year 2, etc subject to satisfactory progress.

Scholarship process

- ❖ Applicants interviewed in the December, February and March vMMIs, and who have been offered a place, will be ranked in order of their performance and the 10 – 15 highest ranked will be invited to a scholarship interview *
- ❖ Scholarship interviews will be held in June 2023 and will be conducted online
- ❖ Scholarship invitees will be asked to prepare a short presentation on a subject provided by the BMS Admissions Team followed by a short question and answer style interview
- ❖ The top performing interviewees will be offered the scholarship
- ❖ *You cannot apply for the scholarship, you will be invited based on performance at interview*

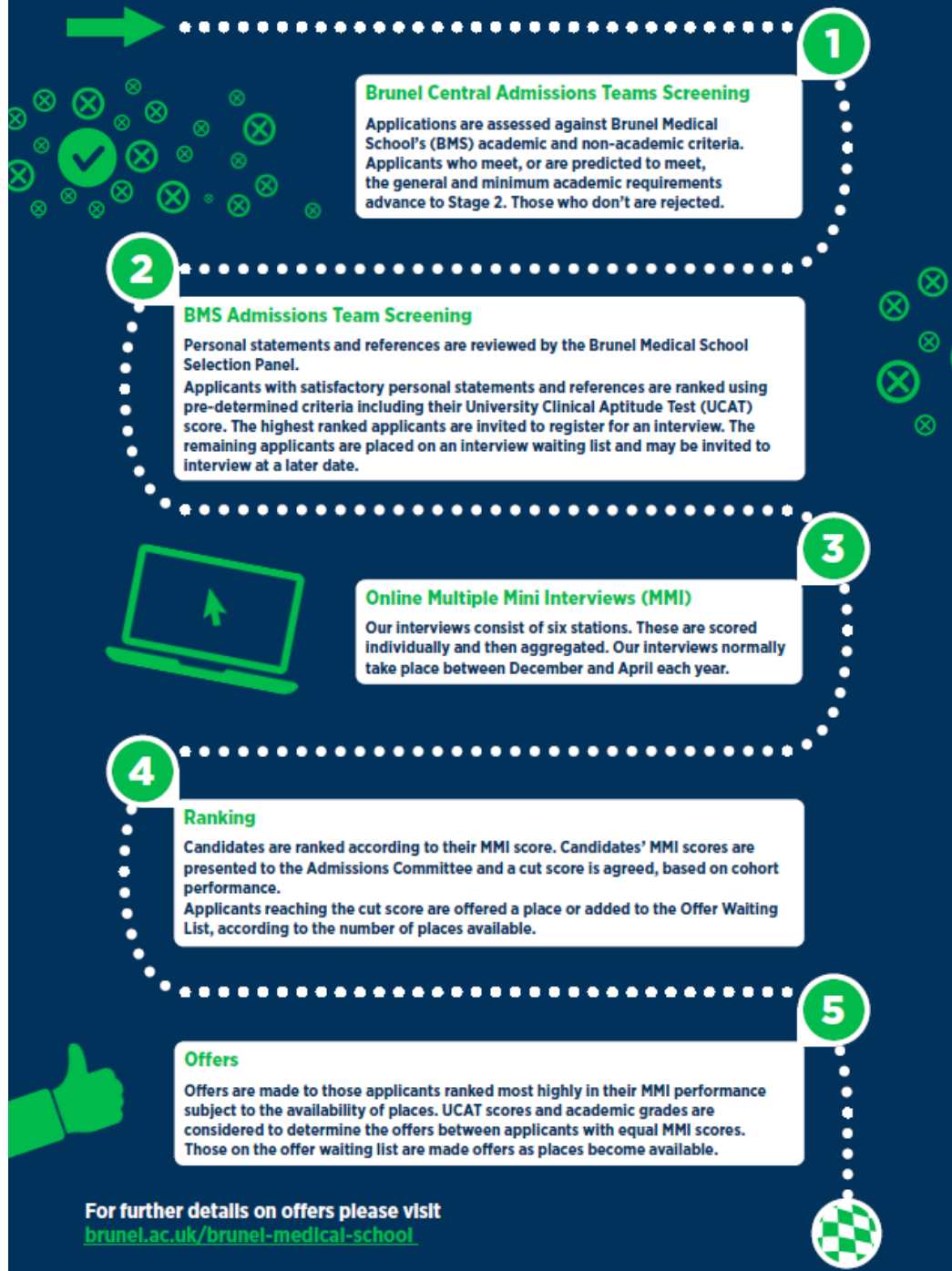
Scholarship holders will be expected to represent the Brunel Medical School as ambassadors throughout their time at the university and to participate occasionally in various activities to help promote the School. This might include hosting tours of the campus and its facilities, providing support at Open Days, participating in social media, videos/photography and other marketing activity as required. Our Scholarship holders will be expected to be role models for our students and maintain a high level of professionalism throughout the course,

You can find more information on our scholarships on our dedicated webpage - [Scholarships | Brunel University London](#)

*The School reserves the right to give priority to candidates of under-represented characteristics in the short-listing for scholarship interviews.

MBBS - How your application is considered

September 2023 Entry



For further details on offers please visit
brunel.ac.uk/brunel-medical-school