

ITE PARTNERSHIP NEWSLETTER



Summer 2017

Congratulations to the Class of 2016-17

A group of our fine, responsible and talented PGCE Primary and Secondary graduating student teachers ready to become NQTs.

You will spot some of the academic team as well. Congratulations to everyone and we wish them every success in the future.



Photograph courtesy of resident university photographer Sally Trussler



To all our partners who have so generously offered school experience placements to our student teachers throughout this academic year. We appreciate your time and efforts in supporting and nurturing them. The academic and Link Tutor team have appreciated your collaboration and we hope you are now able to recruit some of this year's cohort.

From all the ITE team ,PDU and student teachers at Brunel University, London

We have enjoyed working with you and would like the opportunity to continue that relationship into 2017-18.



Contents:

P2 Thanks to Partners

Make your Placement Offers Now for 2017-18

P3 Welcoming New Primary Staff Member

New Book Publication

P4 PCM/ Mentor Conference Information

P5 Question Time

P6 Gwen Ineson on Primary Maths

P7 PE News

P8 Salters Institute Festival of Chemistry

P9 Building Bridges with Local Schools

P10 Learning Outside the Classroom

P11 Part time Doctor in Education programme

P12 Save the Dates

School Partnership Invitation

Submit your Placement Offers now for 2017-18

If you have not received this information via your school office email box follow the relevant link below to submit your placement offers:

Primary:

<https://goo.gl/forms/4foINAxkBp66pJlm2>

Secondary:

<https://goo.gl/forms/a8eiJ2IRJOjC1tQK2>



The secondary mathematics PGCE group enjoying their last days as student teachers – what a fine, talented bunch of beginning teachers they are!

Introducing our newest member of the PGCE team - Balbir Kaur

Prior to joining Brunel University in March 2017, Balbir worked in Primary Schools for over ten years where she was a Leading Mathematics Teacher and worked with the Local Authority on various issues related to primary mathematics and EAL. She went on to become a Senior Lecturer in primary mathematics at the University of Wolverhampton. This role offered the opportunity to work on research and professional practice modules on both undergraduate and postgraduate primary teaching courses leading to Qualified Teacher Status (QTS). In addition Balbir has been a cluster leader for primary mathematics and lead tutor for the Assessment Only route into teaching and the Lead Tutor on the primary School Direct Salaried route.

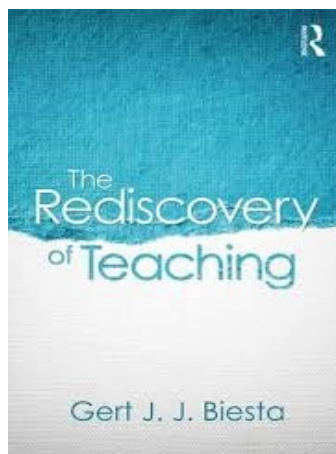
Balbir was seconded for two years to the role of a Teaching School manager with a special school, in a collaboration between the school and the university. This offered new horizons, a vast array of challenges and the opportunity to develop ideas with headteachers and other senior leaders in school.

Balbir is looking forward to working closely with the PGCE team and the network of schools and partnerships to support the next generation of teachers. Her research interest is in primary mathematics and is currently looking at themes related to primary mathematics across the curriculum; primary mathematics and ICT; how we develop and support student teachers and learners to become story tellers of mathematics. She would welcome opportunities to work collaboratively with schools on any of the above themes and if you are interested in developing these areas in your school please do get in touch.

Balbir.kaur@brunel.ac.uk.

New Publication (June 2017)

Gert Biesta, Professor of Education and Director of Research in the Department of Education, has just published a new book: *The Rediscovery of Teaching* (New York/London, Routledge).



The Rediscovery of Teaching presents the innovative claim that teaching does not necessarily have to be perceived as an act of control but can be understood and configured as a way of activating possibilities for students to exist as subjects. By framing teaching as an act of dissensus, that is, as an interruption of egological ways of being, this book positions teaching at the progressive end of the educational spectrum, where it can be reconnected with the emancipatory ambitions of education. In conversation with the works of Emmanuel Levinas, Paulo Freire, Jacques Rancière, and other theorists, Gert Biesta shows how students' existence as subjects hinges on the creation of existential possibilities, through which students can assert their "grown-up" place in the world. Written for researchers and students in the areas of philosophy of education, educational theory, curriculum theory, teaching, and teacher education, *The Rediscovery of Teaching* demonstrates the important role of teachers and teaching in the project of education as emancipation towards grown-up ways of being in the world. <https://www.routledge.com/The-Rediscovery-of-Teaching/Biesta/p/book/9781138670709>

Professional Coordinating Mentors (PCM) Conference



A collaborative conference aiming to showcase the new National Mentor Standards and offer Mentors a shared approach to their implementation

Includes:

- ♦ An Introduction to the National Mentor Standards (NMS)
- ♦ An Introduction to the Framework for the NMS: Audit and Modules
- ♦ Workshop activities to familiarise PCMs with the NMS
- ♦ Consideration of Moderation and Quality Assurance

Two launch events, choose which suits you:

5th July 2017, 1-4pm, St Mary's University, Waldegrave Room,

All places must be pre-booked. For this date contact victoria.coles@stmarys.ac.uk

Go to; <https://www.stmarys.ac.uk/contact/directions.aspx> for travel information

6th July 2017, 1-4pm, Brunel University London,

Eastern Gateway building, Rm 111

All places must be pre-booked, including car parking permits, For bookings for this date follow this link:

<https://www.eventbrite.com/e/professional-coordinating-mentors-conference-tickets-34848859878>

For enquiries for this date contact; cbass-admin-pdu@brunel.ac.uk

Go to: <http://www.brunel.ac.uk/about/finding-us> for further travel information



Lampton School
a DfE Outstanding Academy & Teaching School



Kingston University
London



EDUCATION QUESTION TIME

In March the Department of Education hosted an Education 'Question Time' in the Eastern Gateway Auditorium. This high profile event was expertly chaired by broadcaster and journalist Victoria Derbyshire



with a panel comprised of the following eminent individuals:

Dr Bethan Marshall

Assessment and English Education expert, Kings College London

Laura McInerney

Editor of Schools Week Magazine

Harinder Pattar

Headteacher, The Heathland School,

Amanda Spielman, Ofsted Chief Inspector

Professor Mike Watts, Professor of Education, Brunel University London

Professor Andrew George, Deputy Vice Chancellor (Teaching and Learning) welcomed everyone on behalf of the University, followed by Deborah Jones who extended a welcome from the Education Department.

Following the traditional format of BBC 'Question Time', the audience was asked to submit questions in advance and these covered a wide range of topics including the expansion of academies, distribution of schools funding, the future role of Ofsted and meeting the diverse needs of pupils in our schools and students within HE. There was also space for extemporaneous questions and the evening was characterised by lively debate. The audience of 350 people was eclectic, representing a range of groups from education and health professionals to sixth form students and members of the general public. Refreshments provided before and after the event provided a useful context for networking during- what was for all - a highly stimulating evening. **Dr Deborah Jones**

Photograph courtesy of resident university photographer Sally Trussler



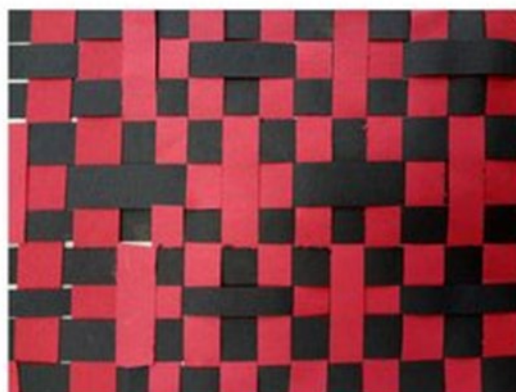
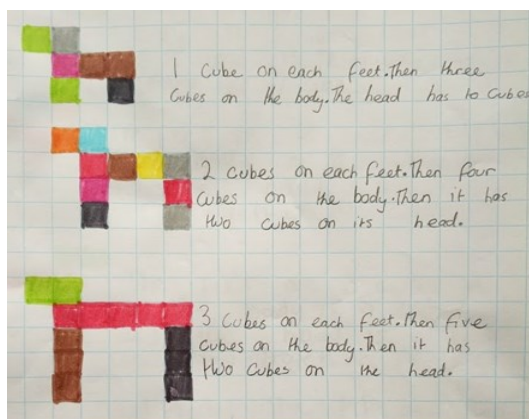
Gwen Ineson, Senior lecturer in Primary education presented at the Congress for European Research in Mathematics Education in Dublin in February 2017 on 'What knowledge is necessary to encourage mathematical talk?' and also contributed a session at the Learning and Teaching Symposium at Brunel University London on 'Effective use of Interactive Whiteboards'.

Gwen recently spent a day at Oaklands Primary School during their maths week, to



focus on creative approaches to mathematical problem solving.

Pupils and staff dressed up in 'mathematical' fancy dress – here's Gwen meeting π and a calculator.

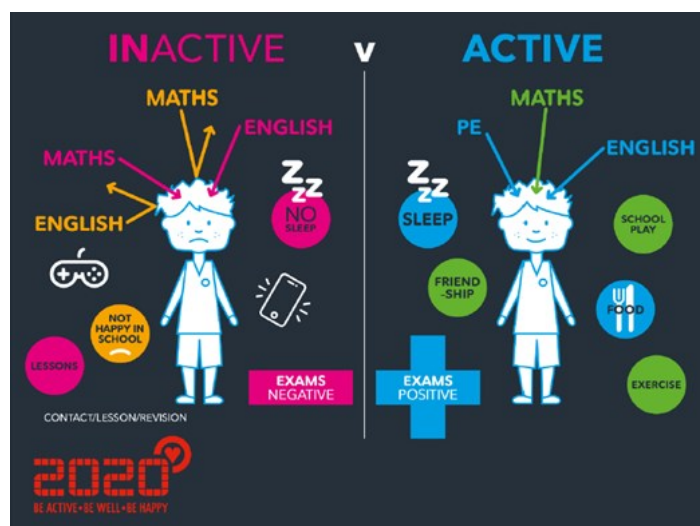


Pupils worked on a range of mathematical activities, including Multilink Families, Houses for Gnomes and Paper weaving.

Primary Maths Group News

The primary maths steering group met recently at Whitehall Infant School. We enjoyed a presentation from James Cox (Selborne Primary School) about Active Maths and we also discussed appropriate activities to support student teachers develop their competence in planning. Please contact Gwen (gwen.ineson@brunel.ac.uk) if you are interested in being involved in this group.

Dr Gwen Ineson





PE News Orienteering

As a PGCE cohort we all attempted the orienteering course at HOAC so we could experience the activity before implementing in our placement schools, and arranging a whole PE orienteering challenge for a group of year 7 pupils. It was a great experience for us to attempt the course before bringing our students along to see what would be happening on the competition day as well as some friendly competition for us trainees. We then all began adding orienteering into our teaching either through a EC club or the PE curriculum at school.

At my placement we started a KS3 club which saw up to 20 students join each week to work on team building skills such as communication, teamwork, organisation and tested their map reading skills to the max. We then picked 9 year 7 students who haven't previously represented their school and who had shown great commitment to the orienteering club. The competition day was a fantastic event with other schools and their students all coming together to take the HOAC orienteering course. As a PGCE cohort we found the day incredibly rewarding seeing our students take part and really get involved and giving it their best! All the students seemed to love the experience of trying something new and representing their school, a great day had by all!

Hannah Embery PE Student teacher

A practical approach to teaching human anatomy



Secondary PE student teachers exploring innovative ways to teach pupils the muscles and bones in the body!

What could be a very dull session of long complicated latin names and difficulty in understanding where and how muscles enable us to move can be fun wearing a paper suit and drawing on the positions and practising spelling the names of the muscles.



Liz Harris



Hi Jane

I just wanted to send a quick thank you to you and your team. Both of my teams had a brilliant time, especially my SEN team yesterday, they couldn't stop thanking me for taking them! I have attached an article that Benjamin Thompson wrote about the day for our school newsletter as it is a really nice summary of the day.

KS3 Coordinator for Science,
Vyners School

Brunel University Trip – Salterns Institute Festivals of Chemistry

On Thursday 4th May 2017, a group of 5 Year 8 students were lucky enough to get picked to go to the Salterns Institute Festivals of Chemistry event, taking place at Brunel University in Uxbridge. We left school at 9.00am and arrived at Brunel University around 9.30am.

When we arrived, we went up to a room in the Halsbury building. At around 10am we got started with all the other schools: Carew Academy, Kingston Academy, Harefield Academy, Slough & Eton School and Uxbridge High School. (We had tough competitors!) Our first activity was 'Who is the Prime Suspect?' The two challenges (for which we had 1 hour and 15 minutes to complete) were a chromatography exercise and testing white powders using distilled water, universal indicator, hydrochloric acid and sodium hydroxide.

Then it was time for lunch, we had earned it! We didn't just have to eat our lunch though, we also had to find samples of different water including: bottled, tap, pond, boiled and river.

After lunch, we had 1 hour to test brands of soap, make our own version and design an advert or a poster. It was really fun and the advert was very funny!! Then we were able to see some practical work, done by Professor Tony Anson. It was amazing and during the practical, he used a banana and put it into liquid nitrogen. The banana froze and when we felt it, it was really cold!

After this event, the prizes were announced. Well Done to Vyners, as we won! We all got pens, Frisbees and a Chemistry molecule set which we deserved for all the effort we had put into the day. Then it was time to head back to school, it has been a great day!



Thank you to Miss Hodgson & Miss Knight for accompanying us on the trip and a massive thank you to all the people at Brunel who made it really fun and assisted us.

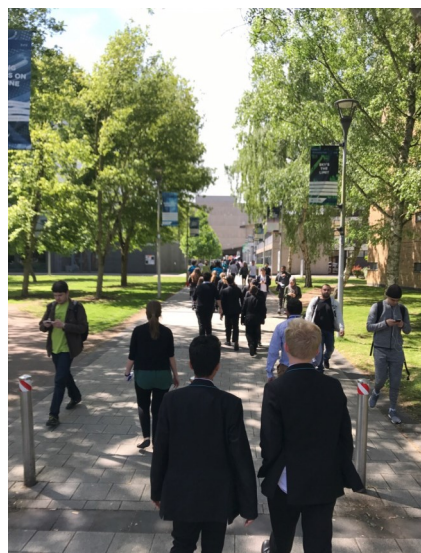
Beware Brunel University, we really want to return!!

Reported by Benjamin Thompson 8W

Building bridges with local schools

PGCE Science student teacher Khaled Azad on placement at Rivers Academy was keen to give his students a taste of science at the university. He arranged with his school mentors and Dr Jane Essex a very enjoyable day for everyone. Experiencing the university campus first hand and taking on some scientific and technology investigations and problem solving certainly whetted the appetite of these potential scientists.

On task and enthusiastic students settle in to designing and building bridges of chocolate.



I am writing this mail just to thank you from the bottom of my heart for the trip arrangement. I must let you know that the kids and us enjoyed every single moment of it and did not want it to end. The kids loved those workshops. The workshops choreographed a new more dignified love for science and technology in them. The overall tour inspired them for more learning aspirations.

Thank you once again for all your support.

Khaled

Tempting chocolate bars were resisted in the name of science!

Dr Jane Essex



Learning Outside the Classroom

The Secondary PGCE day on Learning Outside the Classroom, on 7th June was spent at the London Museum of Water and Steam:

<http://www.waterandsteam.org.uk>.

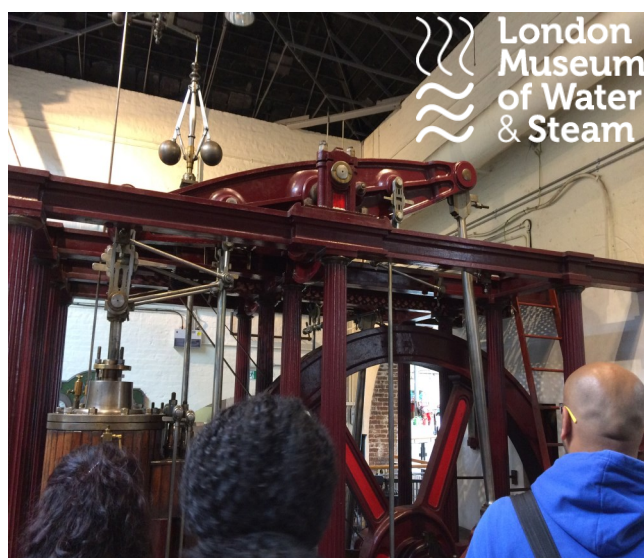
Students took part in a range of activities that the museum provides for school children, which included 'Monster Soup' - an activity about the invention of the microscope, the importance of clean drinking water and water related diseases such as cholera.



Students worked in partnership with the museum to review materials for Key Stage 1, 2 and BTEC students and helped create new resources for Key Stage 3, 4 and A level students.

The museum has the largest collection of Cornish engines in the world, including the world's largest working single cylinder steam engine and the only complete in-situ Bull engine.

Helen Gourlay



Part-Time Doctor of Education (EdD)

Department of Education – next cohort begins January 2018

Our Doctor of Education (EdD) postgraduate research degree is currently recruiting for the January 2018 cohort. The EdD is offered on an exclusively part-time basis with one intake each January. Students are supported through to successful completion of their doctorate drawing on extensive expertise from within the Department of Education and our University Graduate School. Within the Department we have two research groups: STEM Education and Pedagogy and Professional Education (PPE) and an overarching theme of social justice, inclusion and equity that underpins much of the research interests of staff within these groups. EdD students are supported by staff from within these groups (e.g. Professor Gert Biesta, Professor Mike Watts and Dr Paula Nadine Zwozdiak-Myers) and have the opportunity to become valued members of the research community in the Department through their doctoral study programme. In November 2015 our provision for PGCE Primary and Secondary Initial Teacher Education secured a double outstanding grade from Ofsted. We are also fortunate to be part of a successful bid to the ESRC to become a doctoral training centre for Education in collaboration with Oxford University.

Our EdD is targeted at senior professionals with a responsibility for education within their organisation. They may be schoolteachers or college/university lecturers but they may also be working in professions allied to medicine and social care, nursing or other public sector occupations such as the police and fire service. Run on a cohort model, we are offering 10-12 students places on this exciting EdD programme each year. The programme has been designed to enable these senior professionals to engage in work-related research that makes a real difference to their organisation as well as to them personally. Teaching and supervision on the programme takes place during weekend (e.g. Friday afternoon/Saturday) and summer school blocks to fit around the demands of our students' jobs.

The EdD is a core part of the Department's strategic plan to offer a continuum of professional education for teachers and others, from initial preparation through to doctoral programmes. Many teachers and other professionals now have Master's degrees and are considering the next step in their personal and professional development. The Brunel EdD offers a high quality doctoral training and supervision experience for a small cohort of experienced professionals who see doctoral study as a way of making a real difference to the profession as well as themselves personally.

For further information about the programme and details of how to apply please visit:
<http://www.brunel.ac.uk/study/postgraduate/Doctor-of-Education-EdD>

Or contact:

Dr Paula Nadine Zwozdiak-Myers Paula.Zwozdiak-Myers@brunel.ac.uk

Programme Director: Doctor of Education (EdD)

We welcome applications from home/EU and overseas students.



Dates for your Diary 2017-18

PGCE Primary & Secondary School Placement Dates

The Foundation School Experience (FSE) Phase dates:

Week 1: Monday 16th October – Friday 20th October 2017 (Wed. is university based)

Week 2-5: Monday 30th October – Friday 24th November 2017 (Wed's are university based)

Week 6-9: Monday 27th November – Friday 22nd December 2017 (Full week)

The Developmental and Consolidation School Experience (DSE/CSE) Phase dates:

Week 1-3: Monday 22nd January – Friday 09th February 2018 (Wed is university based)

Week 4-9: Monday 19th February – Thursday 29th March 2018 (Full weeks)

Week 10-15: Monday 16th April – Friday 25th May 2018 (Full weeks)

Week 16-17: Monday 04th June – Friday 15th June 2018 (Full weeks)

PGCE Alternative Settings Placement Dates

5 days Introduction - Monday 27th November 2017 - Friday 1st December 2017

Week 1: Monday 14th May - Friday 18th May 2018

Week 2: Monday 21st May - Friday 25th May 2018

Week 3: Monday 4th June - Friday 8th June 2018

Week 4: Monday 11th June - Friday 15th June 2018

ITE Partnership Management Group Meetings

Tuesday 17th October 2017, 4-5.30pm

Thursday 7th December 2017, 4-5.30pm

Tuesday 30th January 2018, 4-5.30pm

Thursday 23rd March 2018, 4-5.30pm

Tuesday 15th May 2018, 4-5.30pm

Thursday 5th June 2018, 4-5.30pm

PGCE Mentor Support and Development Sessions

(Each school should send at least one member of staff to each applicable session)

Primary and Secondary:

Tuesday 10th September 2017, 2-5pm, Brunel University London, or

Thursday 9th November 2017, 3-6pm, Brunel University London,