

# Welcome To Brunel University London

**An Overview**  
March 2020

By Ali Bakhsh  
[Ali.bakhsh@brunel.ac.uk](mailto:Ali.bakhsh@brunel.ac.uk)

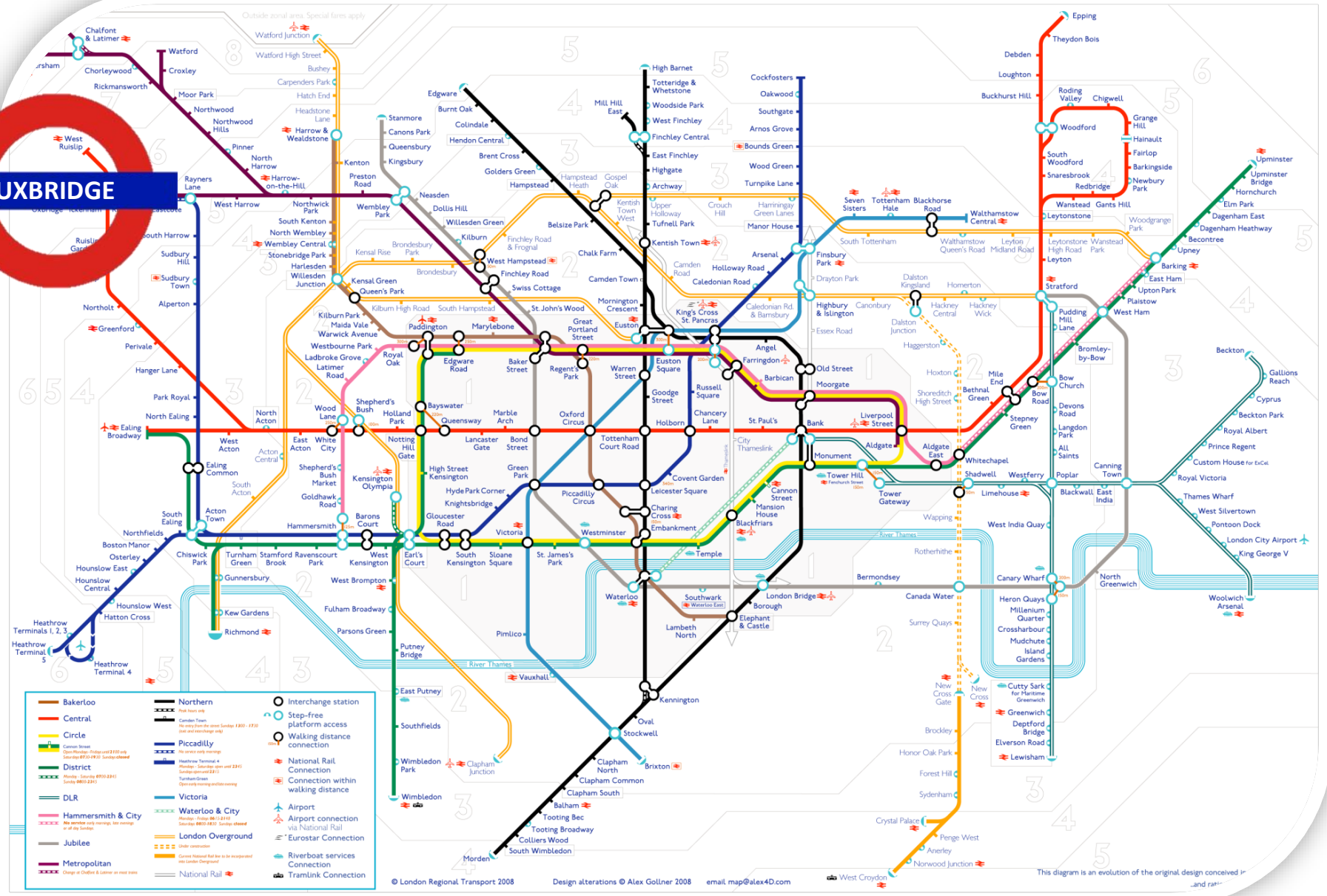




*20 minutes by car to / from London Heathrow airport, 45 minutes to Central London*



# UXBRIDGE



- |                    |                   |                                      |
|--------------------|-------------------|--------------------------------------|
| Bakerloo           | Northern          | Interchange station                  |
| Central            | Piccadilly        | Step-free platform access            |
| Circle             | Victoria          | Walking distance connection          |
| District           | Waterloo & City   | National Rail Connection             |
| DLR                | London Overground | Connection within walking distance   |
| Hammersmith & City | Jubilee           | Airport                              |
| Metropolitan       | National Rail     | Airport connection via National Rail |
|                    |                   | Eurostar Connection                  |
|                    |                   | Riverboat services Connection        |
|                    |                   | Tramlink Connection                  |

© London Regional Transport 2008 Design alterations © Alex Gollner 2008 email map@alex4d.com West Croydon This diagram is an evolution of the original design conceived in 1945 and published in 1951.



20 mins by car from Heathrow Airport



14,000 students study at Brunel



2,700 International students from 150 countries



41st University in the UK (QS World University Rankings 2019)



332nd of universities worldwide (QS World University Rankings 2019)



40 mins by tube to Central London



World top 35 university for International outlook (Times Higher Education 2019)



Guaranteed accommodation on our London campuses



Best student city in the world (QS Best Student Cities 2019)



Over 150 clubs and societies



- 1 Brunel Business School
- 2 Design and Engineering
- 3 Fitness centre
- 4 School of Health and life sciences
- 5 Law school

- 6 Brunel Language Centre
- 7 Sports park
- 8 24 hour library
- 9 Restaurants and Cafes
- A Accomodation



# Global Recognition

- **QS World University Rankings 2020**  
*359th in the world and 42<sup>nd</sup> in the UK*
- **Times Higher Education World University Rankings 2020**  
*351-400 world band and 42<sup>nd</sup> in the UK*
- **Academic Ranking of World Universities (Shanghai) 2019**  
*501-600 world band and 37<sup>th</sup> in the UK*
- **Times Higher Education World University Rankings 2020**  
*34<sup>th</sup> in the world for International Outlook*
  
- **A UK Top 25 University for graduate starting salaries**  
*(The Sunday Times, 2017)*
- **A UK Top 10 University for boosting graduate salaries**  
*(The Financial Times, 2017)*



# Academic Structure

College of  
Business, Arts and  
Social Sciences  
(CBASS)



College of  
Engineering,  
Design and  
Physical Sciences  
(CEDPS)



College of Health  
and Life Sciences  
(CHLS)



# COLLEGE OF BUSINESS, ARTS AND SOCIAL SCIENCES

The College of Business, Arts and Social Sciences is committed to delivering excellent research led teaching and preparing its students to lead successful lives and to have brilliant careers.

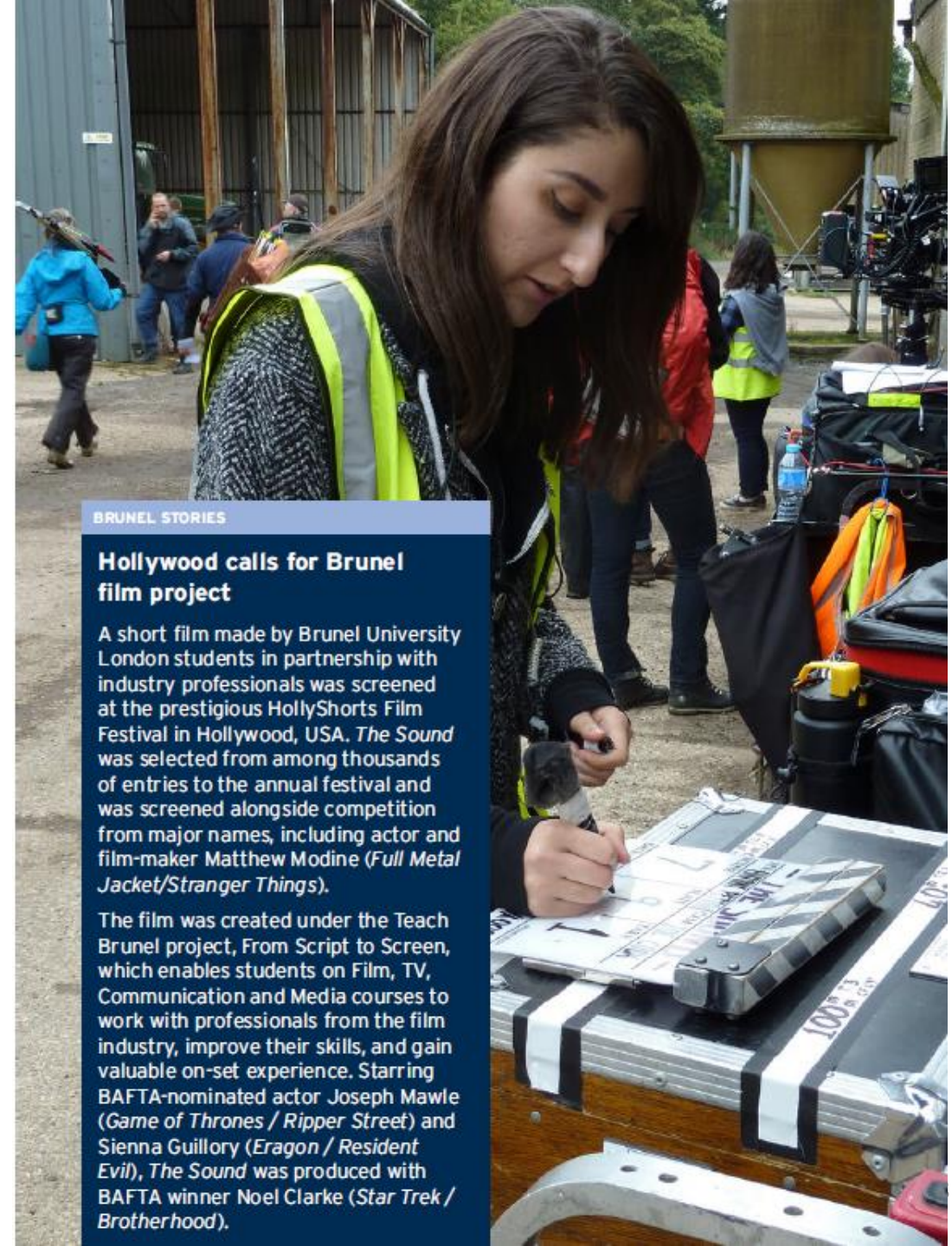
We run a range of workshops, programmes and extra-curricular activities designed to equip students with the knowledge and skills to compete in the global economy. We have a reputation for teaching excellence and research. Alongside other research produced by the University, we change the lives of people around the world by bringing economic, social and cultural benefits.

## Subject Areas

- Anthropology
- Brunel Business School
- Brunel Law School
- Communication and Media Studies
- Creative Writing
- Economics and Finance
- Education
- English
- Film Studies
- Games Design
- Global Challenges
- History
- Journalism
- Music
- Politics
- Sociology
- Theatre

## Accreditation and approvals

Many of our courses are approved and accredited by industry, including the following professional bodies:



### BRUNEL STORIES

#### Hollywood calls for Brunel film project

A short film made by Brunel University London students in partnership with industry professionals was screened at the prestigious HollyShorts Film Festival in Hollywood, USA. *The Sound* was selected from among thousands of entries to the annual festival and was screened alongside competition from major names, including actor and film-maker Matthew Modine (*Full Metal Jacket/Stranger Things*).

The film was created under the Teach Brunel project, From Script to Screen, which enables students on Film, TV, Communication and Media courses to work with professionals from the film industry, improve their skills, and gain valuable on-set experience. Starring BAFTA-nominated actor Joseph Mawle (*Game of Thrones / Ripper Street*) and Sienna Guillory (*Eragon / Resident Evil*), *The Sound* was produced with BAFTA winner Noel Clarke (*Star Trek / Brotherhood*).

# COLLEGE OF HEALTH AND LIFE SCIENCES

**The College of Health and Life Sciences plays a fundamental part of health research in the UK.**

Whether it is through medical breakthroughs that aid those suffering from disease, research designed to aid elite athletes improve their performance or programmes to train the next generation of health professionals, we produce graduates who stand willing and able to make a difference.

Home to the Brunel Partners Academic Centre for Health Sciences (BPACHS) we provide the perfect setting for researching and developing new methods of healthcare delivery, while training future generations of health and social care professionals to adapt to the changing landscape.

## Subject Areas

- Biomedical Sciences
- Environmental Sciences
- Life Sciences
- Occupational Therapy
- Physician Associate
- Physiotherapy
- Psychology
- Public Health and Health Promotion
- Social Work
- Specialist Community Public Health Nursing
- Sport, Health and Exercise Sciences

## Accreditation and approvals

Many of our courses are approved and accredited by industry, including the following professional bodies:



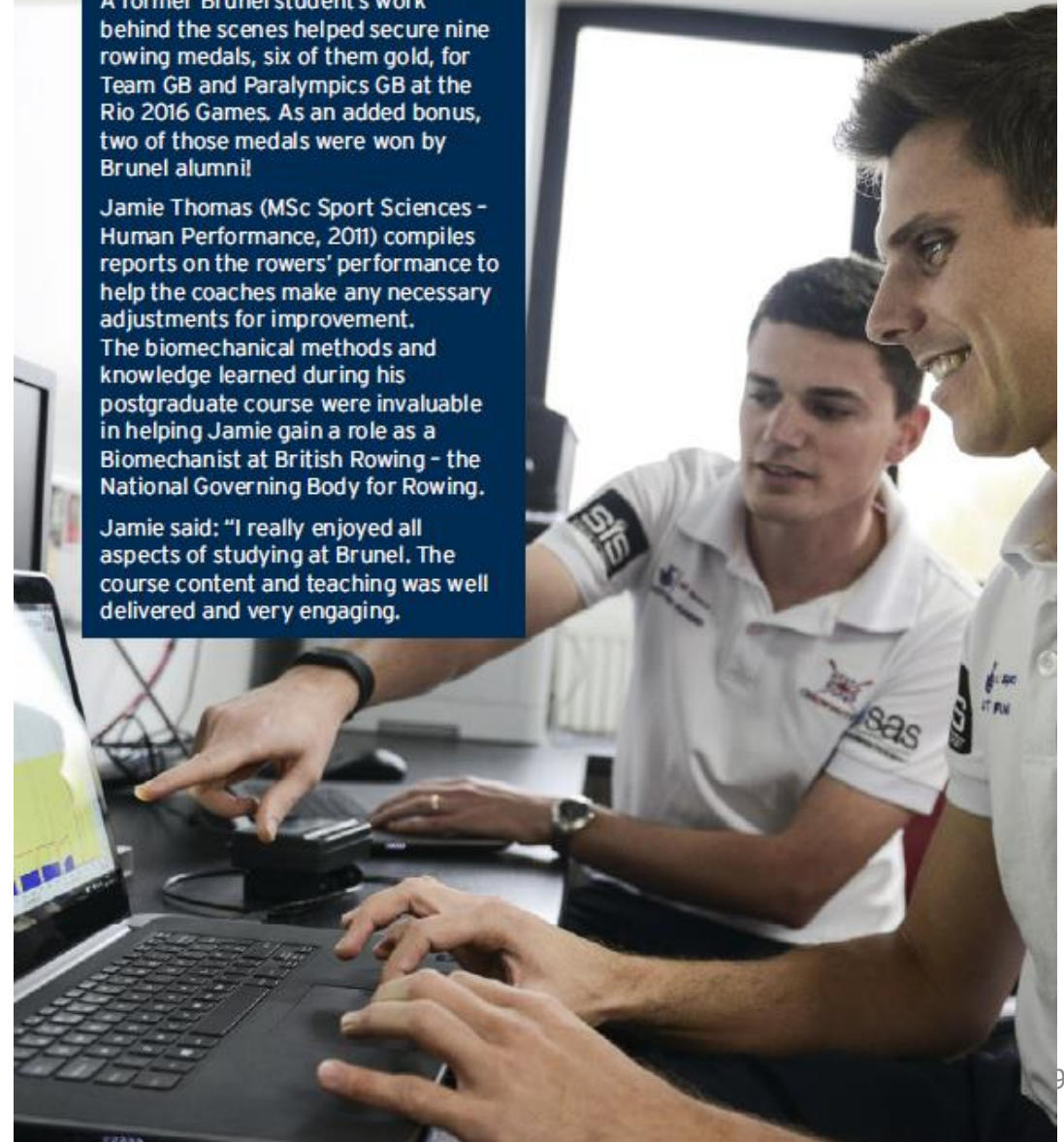
### BRUNEL STORIES

#### Creating gold standard performances

A former Brunel student's work behind the scenes helped secure nine rowing medals, six of them gold, for Team GB and Paralympics GB at the Rio 2016 Games. As an added bonus, two of those medals were won by Brunel alumni!

Jamie Thomas (MSc Sport Sciences - Human Performance, 2011) compiles reports on the rowers' performance to help the coaches make any necessary adjustments for improvement. The biomechanical methods and knowledge learned during his postgraduate course were invaluable in helping Jamie gain a role as a Biomechanist at British Rowing - the National Governing Body for Rowing.

Jamie said: "I really enjoyed all aspects of studying at Brunel. The course content and teaching was well delivered and very engaging."



# COLLEGE OF ENGINEERING, DESIGN AND PHYSICAL SCIENCES

The College of Engineering, Design and Physical Sciences is one of the largest Colleges of its type in the UK, with close to 5000 undergraduate and postgraduate students.

We strive to put creativity and innovation at the heart of everything we do, offering exciting, and vocational programmes across a range of integrated disciplines. Our graduates are known for their ability to solve challenging problems, for the good of society, and their entrepreneurial spirit, following in the footsteps of one of Britain's most creative designers and engineers, Isambard Kingdom Brunel.

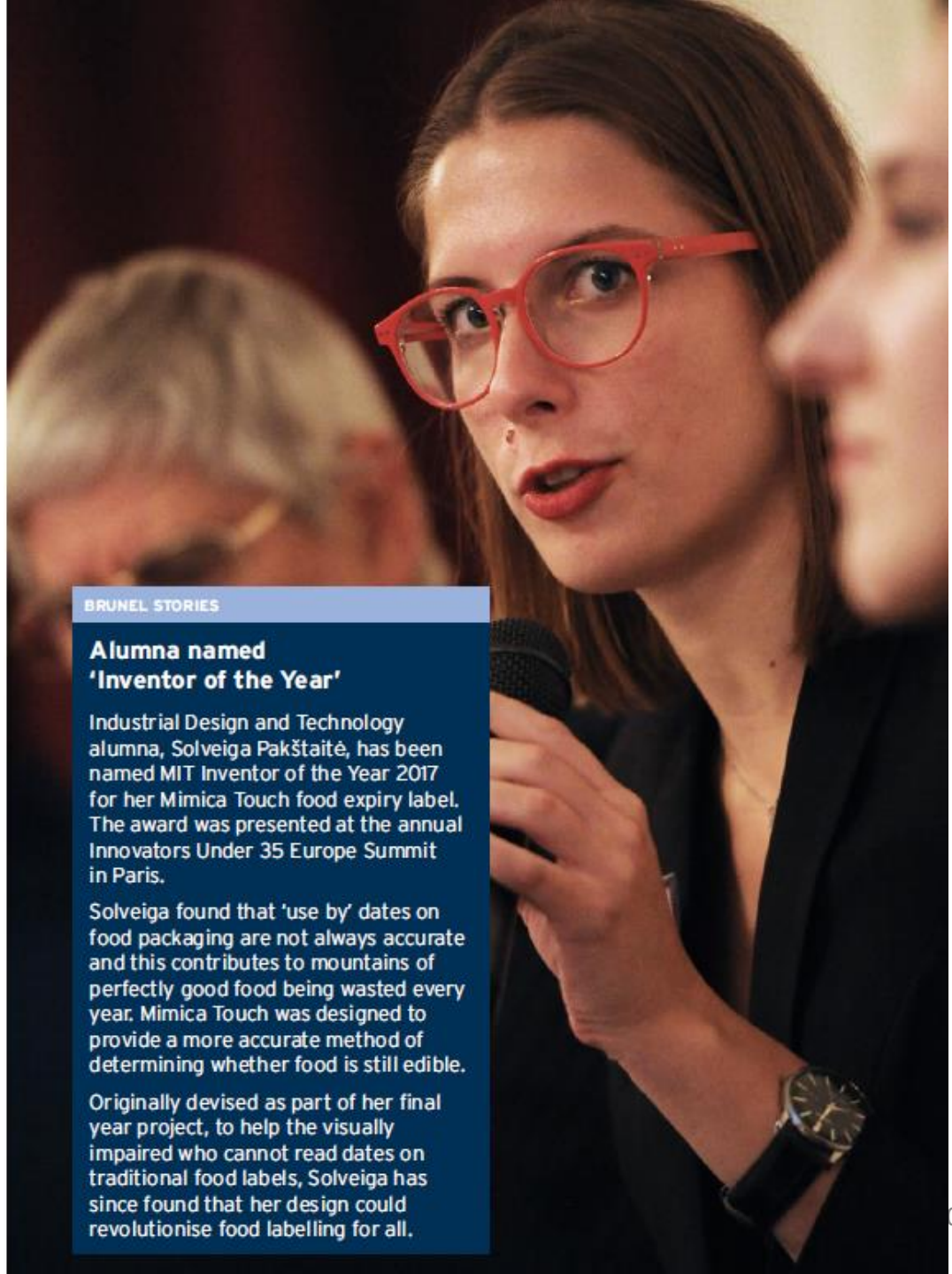
Our mission is to deliver a transformative education experience that nurtures talent, encourages creativity and scholarship and fosters lifelong learning through enquiry and our vision is to be a leading and distinctive STEM education and knowledge provider.

## Subject Areas

- Aerospace Engineering
- Civil Engineering
- Computer Science
- Design
- Digital Media
- Electronic and Electrical Engineering
- Flood and Coastal Engineering
- Mathematics
- Mechanical and Automotive Engineering
- Chemical Engineering

## Accreditation and approvals

Many of our courses are approved and accredited by industry, including the following professional bodies:



### BRUNEL STORIES

#### Alumna named 'Inventor of the Year'

Industrial Design and Technology alumna, Solveiga Pakštaitė, has been named MIT Inventor of the Year 2017 for her Mimica Touch food expiry label. The award was presented at the annual Innovators Under 35 Europe Summit in Paris.

Solveiga found that 'use by' dates on food packaging are not always accurate and this contributes to mountains of perfectly good food being wasted every year. Mimica Touch was designed to provide a more accurate method of determining whether food is still edible.

Originally devised as part of her final year project, to help the visually impaired who cannot read dates on traditional food labels, Solveiga has since found that her design could revolutionise food labelling for all.

# Preparing our students for today and the future

Access our award-winning

## PROFESSIONAL DEVELOPMENT CENTRE

*careers support*

*entrepreneurial support*

*sandwich placements incl. overseas (financial support)*

*modern languages*

*part-time work & volunteering*

*study abroad*

*employability programmes*



# Academic Pathways

## University Foundation (UG)

- Business Computing/Computer Science
- Business and Management
- Economics and Finance
- Design
- Engineering
- Humanities Social Sciences and Education
- Life Sciences
- Law

## First Year University Studies (UG)

- Business and Management
- Economics and Finance
- Business Computing/Computer Science



## Pre-Master's (PG)

- Business and Management
- Engineering and Design
- Business Computing/Computer Science
- Environmental Science and Sustainability
- Arts
- Law



UG progression rate - 94%  
PG progression rate - 97%

[www.lbic.navitas.com](http://www.lbic.navitas.com)  
[www.lbic.navitas.com/admission-requirements](http://www.lbic.navitas.com/admission-requirements)  
[www.lbic.navitas.com/fees](http://www.lbic.navitas.com/fees)

[vimeo.com/313753833](https://vimeo.com/313753833)

# Brunel Language Centre

**Ranked amongst the best on-campus language centres in the UK**

96% pass rate for students enrolled on pre-sessional English courses  
Offering flexibility for students through multiple start dates in the year  
Deeper engagement and learning through our 2-tutor system  
Individual tutorial system offering 1-to-1 support

**Brunel Language Centre achieved 10 strengths in its recent British Council inspection (2016).  
Only 2 other university language centres in the UK gained more than this, one in London and one on the south coast.**

# International Excellence Scholarship 2019

- Number of awards: 110
- Value of awards: £6,000
- Application: Register online - [click here](#)
- Deadlines: First deadline 17<sup>th</sup> April; Second deadline 30<sup>th</sup> June
- Eligibility: Sept 2020 offer holder and overseas fee paying

## If successful:

- For postgraduates a £6000 is applied on first year only
- For undergraduates, subject to requirements, £6000 fee waiver is applied per year for up to three years

# Accommodation Options

## On-Campus

- 4540 rooms available
- Majority are en-suite
- Starting at £146.09 per week
- Studio flats at £218.40 per week
- Booking fee £350 deposit
- Rent paid on instalment basis

## Off-Campus

- C. 70 properties available
- Within easy reach of the campus
- Starting from £203 per week
- Contract length between 39 and 52 weeks
- Rent is paid in four instalments

International students are guaranteed accommodation for the duration of their studies at Brunel – this includes foundation students

Living expenses: On average, students need to budget £1,000 p/month, including accommodation, for living expenses

Availability and rates are subject to change. **For more and up to date information visit: [brunel.ac.uk/life/accommodation](http://brunel.ac.uk/life/accommodation)**

# Submitting Applications

- Submitting Undergraduate Applications:
  - Via UCAS, Common App or our Agent Zone portal
  - Please ensure you send grades / predicated grades, personal statement, passport copy, references
- Submitting Postgraduate Applications:
  - Submitted directly through the specific course page on [www.brunel.ac.uk](http://www.brunel.ac.uk)
  - Please ensure you send undergraduate certificate and transcripts, personal statement, passport copy
- Submitting Research / PhD Applications:
  - Submitted directly through the specific course page on [www.brunel.ac.uk](http://www.brunel.ac.uk)
  - Please ensure you send undergraduate and postgraduate certificate and transcripts, research proposal personal statement, passport copy and references

# Average Application Turnaround Times

## **Undergraduate**

~2 weeks

## **Postgraduate**

~2 weeks

## **Research**

~6 weeks

Please ensure all necessary documents have been submitted to avoid delays on decisions being made

Some courses require portfolios and interviews, while our professional and MBA programmes require references

Please contact either our International Admissions team, or us directly, if you require an update on the status of an application

# Key Contacts

**International Admissions:** [International-Admissions@brunel.ac.uk](mailto:International-Admissions@brunel.ac.uk)

For direct applications and updating documentation

**International Scholarships:** [scholarships@brunel.ac.uk](mailto:scholarships@brunel.ac.uk)

Chasing applications and enquiring about scholarship schemes

**Student Finance:** [stufin@brunel.ac.uk](mailto:stufin@brunel.ac.uk)

Sending deposit receipts (cc'd International Admissions)

**LBIC Pathways:** [info@lbic.brunel.ac.uk](mailto:info@lbic.brunel.ac.uk)

For pathway applications and decisions

**Brunel Language Centre:** [languagecentre@brunel.ac.uk](mailto:languagecentre@brunel.ac.uk)

For pre-sessional English, BrunELT and general English courses

**Student Centre:** [Student.Centre@brunel.ac.uk](mailto:Student.Centre@brunel.ac.uk)

For progress reports, confirming authenticity of documents