

# STUDY ABROAD 2022/23



**Brunel**  
University  
London





“ Since my first day at Brunel, I was truly welcomed to the University community. Everyone tried to make me feel at home and I really valued that. ”





# Contents

Your London adventure starts here	5
Discover Brunel	6
<b>Be inspired</b>	<b>8</b>
Your study options	10
English language support	11
How you'll learn	13
<b>Be outstanding</b>	<b>14</b>
Supporting your professional development	17
<b>Be adventurous</b>	<b>18</b>
London: the best student city in the world	20
Our London location	22
Our campus and facilities	24
Be part of our vibrant community	26
Your new home	28
<b>Be yourself</b>	<b>30</b>
Welcoming International students	32
Connect with us	34

## Your London adventure starts here

**We're delighted that you're considering joining our friendly academic and student community at Brunel University London.**

Home to over 16,000 students from 144 countries, Brunel welcomes many students each year who take part in a Study Abroad programme. By studying at Brunel you'll become part of a lively, vibrant and strikingly international community where you'll meet people from all over the world.

We're based on a single campus in west London, so you'll live and study in one place. The campus is beautifully maintained, set within leafy surroundings, and our excellent facilities give our students a safe and welcoming setting to study and thrive.

Whether you're joining us for a full year, or just a term, we hope to welcome you to the UK and Brunel very soon.

# Discover Brunel



**16,152 students  
study at Brunel**



**Top 3rd of  
universities  
worldwide**  
(QS World University  
Rankings 2022)



**World top 23  
university for  
international  
outlook**  
(Times Higher Education  
2022)



**5,792  
international  
students from  
144 countries**



**20 mins by car  
from Heathrow  
Airport**



**40 mins by tube  
to Central London**



**Affordable  
accommodation  
on our London  
campus**



**Over 140 clubs  
and societies**



**Over 110  
undergraduate  
courses**



**Best student city in the world**  
(QS Best Student Cities 2022)



**Top 100 university  
for sports**  
(QS World Rankings by  
Subject 2021)





A photograph of two young women in black graduation gowns, standing in a library with tall wooden bookshelves filled with books. The woman in the foreground has long reddish-brown hair and is looking slightly to the right. The woman behind her has blonde hair tied back and is also looking to the right. A large blue circle is overlaid on the right side of the image, containing the text 'Learn with leading academics'.

## Learn with leading academics

Few universities offer a better learning environment than we do. We sit in the top 25 per cent of UK universities for research. It means we attract and retain leading academics who produce world-renowned research. This creates real-life situations, promotes innovative solutions and delivers inspiration daily.

Our teaching is judged to be among the UK's finest. Whichever course you choose to study, you'll be taught by leading academics who are experts in their field and passionate about what they teach. Your tutors and lecturers will be the subject's leading thinkers. Just think how inspiring your learning will be.

“ I’ve had the opportunity of attending lectures given by professors with impressive backgrounds and specialists in their area, who love and are dedicated to teaching. The knowledge that I’ve acquired will aid me in becoming a better professional. ”

# Your study options

**Study at Brunel for up to one year whilst earning credits to transfer back to your home institution.**

## Exchange programme

Brunel has a number of international partners offering exciting exchange opportunities for students - we're also part of the Erasmus+ programme. To find out if your institution has an agreement with Brunel please contact [exchanges@brunel.ac.uk](mailto:exchanges@brunel.ac.uk)

## Study Abroad programme

If your university isn't partnered with us, you can apply to become a Brunel student under the Study Abroad programme. This option is ideal if you want to spend a period of time studying in the UK while still earning credits to transfer back to your home institution. Tuition fees for a term at Brunel start from £7,000 and for a year £14,000.

## We offer a range of subject areas including:

- |                                   |                                       |
|-----------------------------------|---------------------------------------|
| • Anthropology                    | • Film Studies                        |
| • Business                        | • History                             |
| • Communication and Media Studies | • Politics                            |
| • Design                          | • Psychology                          |
| • Economics and Finance           | • Sociology                           |
| • English                         | • Sport, Health and Exercise Sciences |
|                                   | • Theatre                             |

You'll need to complete three modules per term. We advise that you select a few alternative modules, as we're unable to guarantee that you'll be able to register for your first choice. A full list of available modules can be found at [brunel.ac.uk/modules](http://brunel.ac.uk/modules)

## Entry requirements

You can apply to study at Brunel if:

- You're currently enrolled at an overseas university, college or higher education institution, and have completed at least one year of study.
- Hold a minimum GPA of at least 2.8 or equivalent. Students who don't meet the minimum requirement may be considered on a case-by-case basis.
- If English isn't your first language, you'll need to submit evidence of your English language ability. Our courses typically require an IELTS score of 6.0, but individual programmes may have additional requirements.

## How to apply

If you're applying via our exchange programme, first you'll need to be nominated by your home institution. You'll then be provided with a link to the application form directly. However, if you're applying via the study abroad programme, or have any questions you'll need to email [exchanges@brunel.ac.uk](mailto:exchanges@brunel.ac.uk)

In order for us to process your application, you'll also need to submit the following supporting documents:

- Academic transcripts
- English language qualification
- Copy of valid passport (or EU identification card if applicable)
- Letter of recommendation
- Module selection form
- Proof of funds.

# English language support

**Participating in the English+ programme is a great way to ensure you meet the English language requirements of your study abroad programme.**

The Brunel Language Centre is a British Council accredited centre for excellence. This means you'll be receiving the highest quality English training, in addition to an exciting academic and social programme.

As an English+ student you'll have the opportunity to spend either two terms or a whole academic year with us, not only improving your English but also earning academic credit towards your undergraduate programme.

You can start the programme in either summer or autumn and stay until spring the following year. During your time here, you'll be able to access the full range of activities and services outlined throughout this guide, as well as having guaranteed on campus accommodation for your entire programme.

For more information, including start dates, fees and how to apply, visit [brunel.ac.uk/language-centre](http://brunel.ac.uk/language-centre)



**97% average pass rate for pre-session courses**

Accredited by the  
**BRITISH COUNCIL**

for the teaching of  
English in the UK



Recognised by the  
English Language Gazette  
as a Centre of Excellence



**Small class sizes and individual support**





## How you'll learn

University teaching and learning will be different at Brunel from anything you've experienced before. We'll support you every step of the way.

You'll develop skills for independent learning, critical analysis and research. You'll learn from world-leading academics and, just as important, you'll spend time learning with your peers and developing your knowledge and skills through private study.

With the support of your personal tutor throughout your degree, you won't be on your own. How you're assessed will depend on your course, and will vary from coursework to presentations, lab tests or exams.

### Our facilities

Your studies will be supported by some of the best equipment and facilities around, that mirror the world of work including:

- digital media green screens
- flight simulator
- clinical suite
- moot court
- workshops and laboratories
- 24-hour library.

### Academic credits

By studying at Brunel in the autumn or spring term, you'll gain the equivalent of 60 credits upon successful completion of your modules. By studying at Brunel for a full year, you'll gain 120 credits.

### Academic calendar

You can join Brunel at a number of points throughout the academic year. If you're unable to join us for a full year, you can opt for a 12 week autumn or spring term.

### Academic calendar 2022/23

Term	Date
<b>Autumn 2022</b>	19 September 2022 – 16 December 2022
<b>Spring 2023</b>	9 January 2023– 31 March 2023
<b>Full year 2022/23</b>	19 September 2022 – 30 June 2023





## Become a global graduate

By studying abroad at Brunel you'll become a global graduate. All of our students have access to first-class coaching, mentoring and networking. Our innovation hub is on hand to help your entrepreneurial spirit thrive - all part of our work-ready support to help you stand out in a competitive marketplace.

Does it make a difference? Brunel graduate salaries are 15 per cent (£3,600) higher than the sector average (three years after graduating), ranking us in the top 30 UK universities\*.

“The amount I've learnt and the incredible networks I've made are going to make me far more employable.”

*\*Graduate Outcomes Survey 2021*





# Supporting your professional development

**Our Professional Development Centre offers a wealth of opportunities, resources and advice to prepare you for life after graduation.**

## Prepare for a graduate career

Our specialist career consultants will help you develop a great CV, practice your interview techniques and coach you on your career options through self-assessment tools, meetings and workshops. Our 15-minute Quick Query sessions are a great way to get some quick guidance, or you can book a longer session to discuss your career plans in more depth at [brunel.ac.uk/pdc/careers](https://brunel.ac.uk/pdc/careers)

## Meet employers on campus

Our campus careers fairs are one of many opportunities you'll have to meet future employers. We have links with over 1,500 companies across all sectors that are regularly invited to our events to meet with students and explain what they do.

## Connect with professionals

Joining our professional mentoring programme can help you improve your employability and gain confidence when it comes to understanding the industry you want to work in. We match students from backgrounds that are under-represented in universities with an experienced mentor in the public or private sector. You'll spend six months working with your mentor on your career and study plans, get help with your CV and practise interview and assessment techniques.

## Become a volunteer

A rewarding way of expanding and developing your skills is to become a Brunel Volunteer. Our students have a long history of volunteering to help the community, local charities and not-for-profit organisations. There's a huge range of schemes you can get involved with, both on and off campus – find out more at [brunelvolunteers.com](https://brunelvolunteers.com)

## Gain work experience

If you want to earn money or gain valuable work experience whilst you're studying, our Job Shop will help you find part-time opportunities on and off campus. You might also be interested in applying to be one of our Student Ambassadors. You can find more details at [brunel.ac.uk/jobshop](https://brunel.ac.uk/jobshop)

## Learn a new language

Brunel is one of the few UK universities to provide free language courses. You can choose from a wide range of European and international languages. You'll be taught by experienced language teachers in a fun and stimulating environment. Language courses run over two terms and you can record your achievements as part of your Brunel+ award – a personal development programme that recognises the skills and experience you develop beyond your studies. [brunel.ac.uk/modern-languages](https://brunel.ac.uk/modern-languages)





## Experience the best student city in the world

Turn your degree into a life-changing adventure in London. At Brunel, we're well connected. Just a short walk away, the town of Uxbridge offers you everything you need to shop, entertain and socialise – and is the perfect base to explore the surrounding countryside. The hustle and bustle of city life is right on your doorstep too, with central London just a tube ride away.

London is also the perfect base to explore Europe. In as little as one to three hours you can take in the sights of Paris from the Eiffel Tower, taste the finest chocolates in Belgium, experience the Northern lights in Iceland, and marvel at the Roman remains of the world-famous Colosseum.

“What I liked most about Brunel was the diversity of students – it was amazing! Getting the chance to study, live and be friends with people from all over the world added so much to the experience.”



# London: the best student city in the world *(QS Best Student Cities 2022)*

London is a unique and exciting place in which to study and live: it's a true world city. From its famous sights, landmarks, museums and theatres to designer fashion, restaurants, clubs and shopping, it's packed with interest and excitement.

## Attractions

Take advantage of the countless free attractions London boasts, alongside those with discounted entrance fees for students. In addition to four UNESCO World Heritage Sites, including the Tower of London, Royal Botanic Gardens, Kew and the Palace of Westminster, London also offers a variety of world-class theatres, museums and art galleries.

## Events

Over 250 festivals take place in London every year, including Notting Hill Carnival, Somerset House Film Festival, Chinese New Year and various other arts and community events. London also attracts big names from the music and entertainment industry to perform at its many venues, in addition to the variety of West End musicals and plays on offer.

## Food

Living in London, you'll have easy access to food from across the world. You can find everything from American style burgers and fries, to Spanish paella, to Indian or Thai curry. Supermarkets and restaurants in London cater for an extremely wide range of needs and tastes. Cuisine from all around the world can be easily found, as can halal, kosher and food types to meet all dietary requirements.

## Shopping

London is world famous for its shopping destinations. Experience Europe's busiest shopping street, Oxford Street, where you'll find Selfridges, John Lewis and other leading high street names. A visit to Harrods in Knightsbridge is also a must.

## Green spaces and parks

The city's parks, canals, reservoirs and riversides form an important network of spaces and public places. Enjoy the variety of parks London has to offer including Hyde Park, St James Park, Hampstead Heath and Greenwich Park. The Royal Parks are some of London's most iconic green spaces and landscapes, visited by millions of people every year and home to a wider range of wildlife.

## The world on your doorstep

London is one of the world's best connected cities. Home to five major airports, and the Eurostar; a high-speed railway service connecting London with major European countries including the Netherlands, Belgium and France. From London you can travel to many key cities in the UK by train. For example, Manchester can be reached in just over two hours, and Scotland in just over four hours.

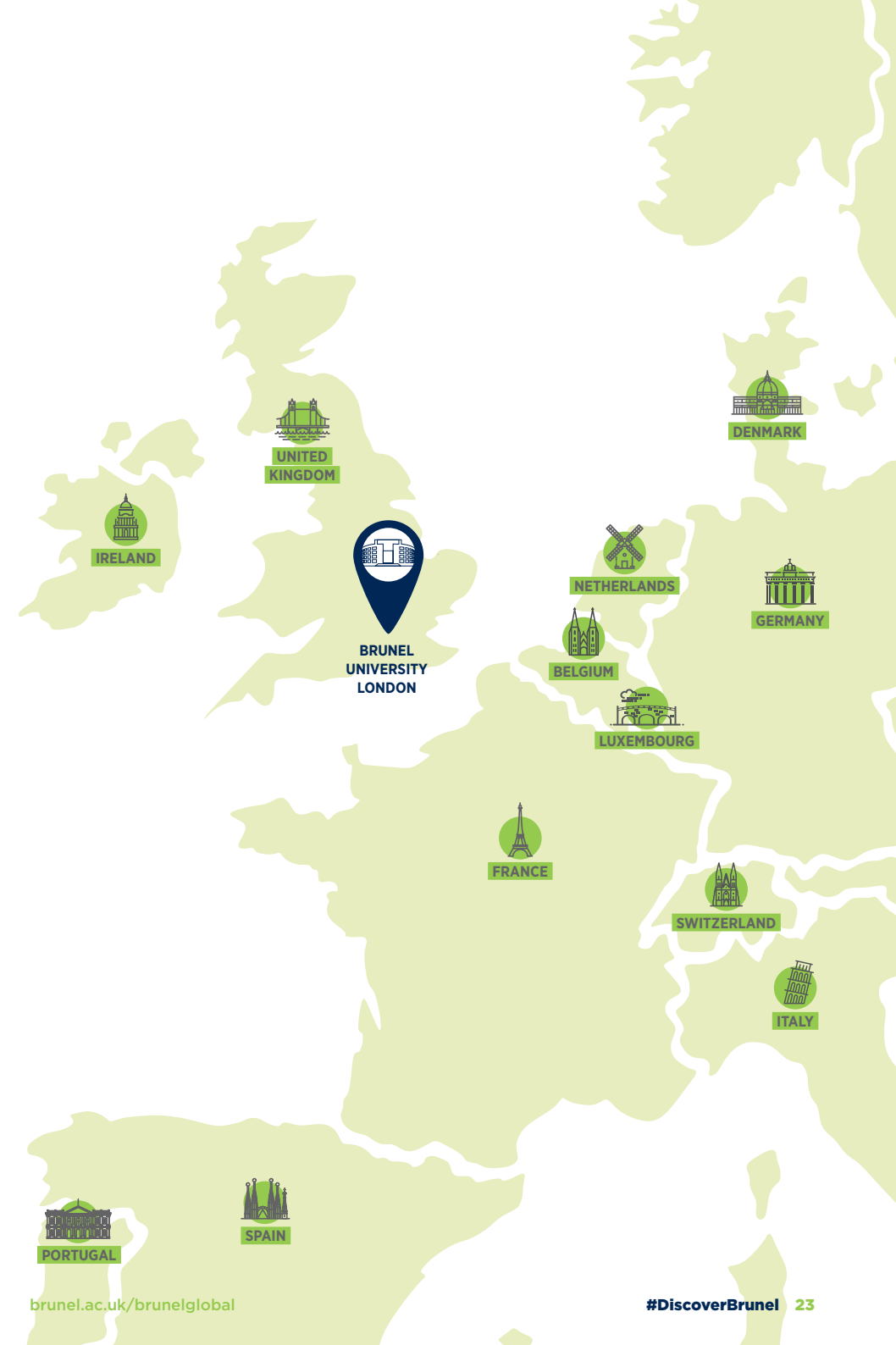
“ I have truly enjoyed my time at Brunel over the past three years. I have made many new international friends and many memories on Brunel's beautiful campus. ”





# Our London location

We are based in London without the stresses and expense of being in central London. By choosing to study with us you'll enjoy the best of city life, whilst also being able to experience the beautiful English countryside.





# Our campus and facilities

**Over 16,000 students study on our single site campus – the largest campus based university in London. With everything you need in one place, it won't take long for Brunel to feel like home.**

## Facilities

Our lively campus community provides everything you could need within a 10-minute walk, from a wide choice of restaurants, a welcoming social hub and on-campus accommodation, to world-class sports facilities, a diverse arts centre and an active Students' Union.

There are a range of facilities on campus to provide you with all the essentials you need including:

- Medical centre
- Pharmacy
- Shops
- Gym
- Library
- Restaurants and cafés

## Food outlets

You can enjoy a wide variety of food outlets to help fuel you throughout the day, including 'The Junction', offering a variety of world food cuisines, and Izzi's, our pizza emporium. Our restaurants and cafés cater to a range of dietary needs and also provide halal and kosher options. In addition, our regular market offers street food, fresh fruit and vegetables, bread and home-made cakes. You're never far from a place to sit down and catch up with friends, with plenty of cafés on site, including Costa and Starbucks.

## Putting safety first

Brunel is one of the safest universities in the UK. Our security team (including our very own policeman "Brunel Bobby") patrol the campus 24/7 and they're always happy to stop and chat. You'll probably meet them soon after you arrive at Brunel, as they provide safety and security briefings to new students which include helpful tips to keep you safe both on and off campus.

## Counselling and mental wellbeing

Brunel is committed to supporting students' mental health and wellbeing. Therefore, we have a variety of services which are free to all Brunel students. Whether you need practical support from our Mental Health Advisors on the impact on your studies, or you need therapeutic support from our Counsellors, we're available to support you.

## Faith and religion

The Meeting House is your place of community, wellbeing and faith, and the home of our multi-faith chaplaincy. It's a dedicated place of welcome, hospitality and care for body, mind and spirit, and is open to all. Not only will you find spiritual care, it's also a peaceful and non-judgmental space to pray, talk, meet friends or simply take a moment for contemplation.







# Be part of our vibrant community

We have a vibrant student community of over 5,790 international students. There are lots of ways for you to get involved and make new friends.

## Sports Performance Programme

Our Sports Performance Programme offers a full support package to Brunel students who want to develop their sporting careers in key sports such as athletics, futsal, football, netball, rugby league/union and basketball.

## Arts and culture

Our campus benefits from a thriving arts and culture scene and we encourage students to develop their creative skills. You can soak up the atmosphere as a spectator or get more hands-on and help organise events, as well as perform in them.

## Students' Union

The Union of Brunel Students is very much at the heart of campus life. A charity that's led by students for students, you automatically become a member when you enrol at Brunel. The Union provides a range of facilities including free and confidential advice on everything from money and debt to housing and academic issues. There are over 100 clubs and societies for you to get involved with, student discounts and offers at shops, restaurants and retailers across the country, and an on-campus bar and nightclub.

## Social

From our campus bar Loco's to The Venue nightclub, there's something for everyone to enjoy. Loco's has everything you could want from a student bar, including pool tables, comfy sofas and a wide range of food and drink – making it the perfect place to hang out with friends. The Union also host lots of evening entertainment from Bingo to Karaoke to Open Mic nights.

“ There are so many societies and activities to get involved in. I have discovered three new hobbies – climbing, cycling and salsa dancing, which have helped me to meet new people. ”



# Your new home

Having a room on campus is a great way to make friends and immerse yourself in our welcoming community. Brunel offers affordable on-campus accommodation, so you're never more than 10 minutes' walk from all the study, social and sporting facilities you need to make the most of your time here.



## Our accommodation

There are 4,500 on-campus rooms across 33 student halls of residence. We have specific accommodation contracts for our Study Abroad students, so whether you are joining us for a full year or just a term, we'll ensure you have a comfortable place to live.

All accommodation can be booked online at [brunel.ac.uk/accommodation](https://brunel.ac.uk/accommodation)

Take a 360 degree look around our halls of residence for yourself at [brunel.ac.uk/virtualtour/accommodation](https://brunel.ac.uk/virtualtour/accommodation)

## Living off-campus

If you prefer to live off-campus, we can help with that too. There's a wide choice of housing near Brunel, with good bus routes to the campus.

Our University Housing Office is dedicated to student's needs and can advise you about renting local properties in the local area. There are several options available:

- Through the Head Leading Scheme, Brunel Student Homes rents properties from local landlords and then rents them on to groups of students.
- Private landlords advertise properties through Brunel Student Homes. These have to meet minimum requirements.

## Accommodation prices

Hall of residence	From cost per week (2022/23 rates)	Number of rooms	En suite (private bathroom)	Standard rooms (shared bathroom)	Studio flats
Bishop Complex	£173.11	698	✓	×	×
Clifton Hall	£125.02	236	×	✓	×
Chepstow Hall	£125.02	231	×	✓	×
Faraday Hall	£173.74	279	✓	×	✓
Fleming Hall	£165.06	380	✓	×	✓
Isambard Complex*	£173.11	1,228	✓	×	✓
Lancaster Complex	£173.11	498	✓	×	✓
Galbraith Hall	£165.06	328	✓	×	✓
Mill Hall*	£176.26	357	✓	×	×

\*Our studio flats for couples start from £312.34 per week.

For more information, please visit [brunel.ac.uk/accommodation](https://brunel.ac.uk/accommodation)



A photograph of two young men, one of South Asian descent and one of African descent, smiling and talking to each other. They are wearing black jackets. The background shows a busy outdoor event with many people, tents, and blue and yellow bunting flags strung across the area.

## Join our vibrant community

The world's students call Brunel home. Something we're extremely proud of. In fact, 144 of the world's countries are represented at Brunel which gives you the opportunity to live and study as part of a diverse, international community.

You'll hear a multitude of languages, see an array of cultures and witness a truly cosmopolitan environment. No wonder Brunel is in the top 23 of universities for international outlook. When you join Brunel, you'll become part of our vibrant community.

“My year abroad was the best part of my degree. The best part was meeting people who I'm sure I'll work with in the future.”



# Welcoming international students

We welcome students from more than 144 countries, giving you the opportunity to live and study as part of a diverse, international community.

## Home away from home

Brunel is a home away from home for our overseas students and this internationalism is reflected in our campus life. We celebrate a wide range of cultural events and festivals throughout the year. With over 100 clubs and societies spanning culture, nationality, faith and religion, as well as general interests, there's something for everyone. And if you'd like to learn a new language and explore a different culture, we offer free courses in a variety of European and international languages.

## International student orientation

Our international student orientation programme has been designed for you to meet new people, familiarise yourself with the area and complete your registration before other students arrive. In addition, we also run a range of fun activities and events for you to get involved with. Past activities have included a British High Tea party and a London sightseeing bus tour.

## Airport pick-up

The closest airport to Brunel is Heathrow Airport - just 20 minutes away. There are many ways that you can travel from Heathrow to campus, including a free airport pick-up service that we run as part of the student orientation programme.

## Brunel Buddies

To welcome international students to the UK, you can choose to have a current student introduce you to life on campus. Buddies are trained students who use their own personal experience of being a new student to answer your questions and guide you through your first few weeks with us.

Your Buddy will be on hand as soon as you arrive here, running campus tours, pointing you in the right direction on and around campus and introducing you to social activities – including the wide range of societies and sports clubs. They can also introduce you to Uxbridge and the local sites. It's the perfect way to meet new people and talk things over with a friendly face. [buddies.brunel.ac.uk](http://buddies.brunel.ac.uk)

## Social programme

Experience London and beyond, settle into the UK, and learn more about British culture by taking part in our social programme. Book onto a variety of trips and events by completing your booking form prior to your arrival at Brunel.





# Connect with us

 /bruneluniversity

 bruneluni

 bruneluni

 /bruneluniversitylondon

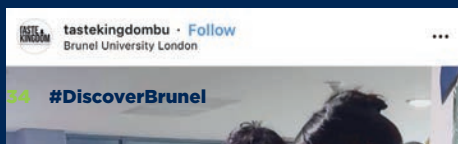
 brunelcampus

 @bruneluniversity

 @bruneluni

 /bruneluniversity

 伦敦布鲁内尔大学.



The information in this brochure is correct at the time of going to press (2022). The most up-to-date information can be found at [brunel.ac.uk/brunelglobal](https://brunel.ac.uk/brunelglobal). It is issued for the general guidance of students entering the university and does not form part of any contract. The university hopes to provide the programmes and facilities described in the brochure but reserves the right to withdraw or to make alterations to courses and facilities if necessary. The university welcomes comments on its programmes from students' parents and sponsors. However, the university's contracts with its students do not confer benefits on third parties for the purposes of the Contracts (Rights of Third Parties) Act 1999.





Brunel University London  
Kingston Lane, Uxbridge  
Middlesex, UB8 3PH

[exchanges@brunel.ac.uk](mailto:exchanges@brunel.ac.uk) | +44 (0) 1895 274000

**[brunel.ac.uk/brunelglobal](https://brunel.ac.uk/brunelglobal)**  
**#DiscoverBrunel**

 [/bruneluniversity](https://www.facebook.com/bruneluniversity)

 [/bruneluniversitylondon](https://www.linkedin.com/company/bruneluniversitylondon)

 [@bruneluni](https://twitter.com/bruneluni)

 [bruneluni](https://www.instagram.com/bruneluni)

 [brunelcampus](https://www.snapchat.com/add/brunelcampus)

 [/bruneluniversity](https://www.youtube.com/bruneluniversity)

 [bruneluni](https://www.wechat.com/qrcode/bruneluni)

 [@bruneluniversity](https://www.tiktok.com/@bruneluniversity)

 伦敦布鲁内尔大学.