

# EALING TRAILFINDERS & BRUNEL UNIVERSITY



## RUGBY SPORTS SCHOLARSHIP PROGRAMME

**"WE WANT PLAYERS TO COME THROUGH THIS SYSTEM, LEAVE UNIVERSITY WITH A DEGREE  
AND A PROFESSIONAL RUGBY CONTRACT AT EALING TRAILFINDERS."  
- DIRECTOR OF RUGBY, BEN WARD**



**TRAILFINDERS**  
RUGBY ACADEMY





# TRAILFINDERS

RUGBY ACADEMY



# DIRECTOR OF RUGBY

BEN WARD



## I AM EXTREMELY PROUD TO INTRODUCE YOU TO OUR SCHOLARSHIP PROGRAMME WITH BRUNEL UNIVERSITY LONDON AS PART OF THE TRAILFINDERS RUGBY ACADEMY.

Since turning professional eight years ago, Ealing Trailfinders have continued to grow year-on-year and currently sit as the 14th best team in the country. Our academy is a vital part of our organisation and we have not taken the usual route that other teams have, we believe that we have created something special for both the player and the club.

Our academy is in conjunction with Brunel University London, allowing players to gain a degree to set them up for the rest of their lives academically, as well as pursuing a professional rugby career with a full-time rugby programme. It is important to focus on education as well as rugby and that is why we believe this partnership is so successful. Brunel host over 13,000 students whilst offering hundreds of courses so there are a huge range of options to combine with the rugby programme.

Players have the opportunity to train with the first team at Ealing Trailfinders, meaning that they are immediately exposed to international standard players to help their development. These sessions are tailored around their university timetable to ensure the right balance.

Six scholars have already made their debuts for the first team and have now gone on to become part of the squad permanently. As well as this, twenty players have been promoted to the first team who are only in the second year of their degree, showing how significantly they improved after just one year in the Academy. We want players to come through this system and leave university with a degree and a professional rugby contract at Ealing Trailfinders.

The coaching and backroom team that we have put in place are of the highest calibre and with international experience behind them, they will provide the players with the platform to succeed.

In order to ensure consistency the majority of the management for the Scholarship Programme also work full time at Ealing Trailfinders with the first team, allowing a seamless crossover.

The coaching team is led by former Ealing Trailfinders player Paddy Gill. Alongside him are assistant coaches Tom Brown (former Ealing Trailfinders Captain), James Brooks (former Wasps and England 7s player), Brett Wilkinson (former Connacht player), Braydon Pieterse (former Taranaki RFU Player Development Manager). The backroom team includes Analysts, Strength and Conditioning Coaches, Physiotherapists, Nutritionists, Psychologists and a Player Development Manager, to make sure that no stone is left unturned as we look to become the best rugby programme in the country.

At Ealing Trailfinders we have two 4G pitches, two grass pitches, three gyms, an analysis suite, a team relaxation room, private chefs and a medical area which have all been key components towards the success of the programme in the opening stages. Our new indoor training centre which includes a 3G pitch will be open in October 2021.

Brunel University London boast world class facilities, their rugby resources meant that France used the campus as a base for the 2015 Rugby World Cup in England. The new international

standard 3G pitch which matches the surface at Ealing Trailfinders, as well as the Indoor Athletics Centre and Gym Complex mean that the players have everything they need to succeed on the pitch. Brunel have previously been a powerhouse in University Rugby and we are looking to repeat their previous achievements as they push towards the BUCS Super League.

In the same way as professionals, we also understand that students need assistance on and off the pitch. We are proud of our pastoral support and that is why we see this as an opportunity that is above and beyond any other university rugby programmes. We have a team of Physiotherapists, Nutritionists, Psychologists, a Player Development manager and a Chaplain who are available to the students.

There are lots of ways to be introduced to the Trailfinders Rugby Academy, our partnerships with the likes of Henley College, Cardinal Newman College, Duke of York School and St Joe's means that from the age of 16 you can begin your journey towards a career playing rugby at Ealing Trailfinders.

We would encourage any player to get in touch and see what we can offer. In this brochure you will find all of the information about the Trailfinders Rugby Academy, I do not believe there is a programme as comprehensive as this in the country.

Ben Ward

**Director of Rugby, Ealing Trailfinders**





**TRAILFINDERS**  
RUGBY ACADEMY



# EALING TRAILFINDERS

Since being taken over by Mike Gooley in 1999, Ealing Trailfinders have been on a remarkable journey, rising from London Three to the top of the Championship.

Ealing Trailfinders are currently the 14th best rugby team in England, and have set their sights firmly set on becoming a Premiership club. Promotion to the second tier was achieved back in 2015, and since then the progression has been significant year-on-year finishing top of the table in the 2021.

For the last four consecutive seasons they have finished in the top two in the Championship standings, and in those years the club have lifted major silverware including the British and Irish Cup, the Championship Cup and the Trailfinders Challenge Cup at Trailfinders Sports Club.

The 2019 World Cup in Japan featured a number of former Trailfinders who have gone on to play on the biggest stage in rugby. Ben Landry, Shane O'Leary, Will Magie and Djustice Sears-Duru and Kyle Sinckler all showed the platform that is provided

in West London. With an outstanding rugby facility which offers everything and full time staff to assist, this is the most appealing place to recognise your potential in professional rugby.

The club offers a comprehensive full time rugby programme which is run by over 30 full-time staff, ranging from rugby coaches to psychologists and chefs. The extensive coaching on offer includes expert throwing, kicking and scrum coaches as well as the backs, forwards and skills coaches who oversee the day-to-day rugby activity.







# TRAILFINDERS

RUGBY ACADEMY



**KIERAN CAMPBELL EALING TRAILFINDERS FIRST TEAM ASSISTANT COACH.**



**ACADEMY PLAYER TAINE WAGSTAFF PLAYING FOR EALING TRAILFINDERS AGAINST BRISTOL BEARS**



**ENGLAND HEAD COACH EDDIE JONES DELIVERS A TRAINING SESSION FOR THE FIRST TEAM**



**STEVEN SHINGLER, FORMELY OF CARDIFF BLUES, LLANELLI SCARLETS AND LONDON IRISH, KICKS AT GOAL**





# TRAILFINDERS

RUGBY ACADEMY







# TRAILFINDERS

RUGBY ACADEMY



**EALING TRAILFINDERS TRAINING FACILITIES AND STADIUM AT TRAILFINDERS SPORTS CLUB**







**TRAILFINDERS**  
RUGBY ACADEMY



# BRUNEL UNIVERSITY LONDON

**Brunel University London is an International University committed to bringing benefit to society through excellence in education, research and knowledge transfer.**

Founded in 1966, Brunel has a reputation for high-impact academic research and entrepreneurial flair. The university works extensively with industry partners, contributing to global innovation and policy change. Situated in Uxbridge, the

university has a broad portfolio of undergraduate and postgraduate programmes that attract 13,000 full-time students and 2,600 staff from more than 100 countries across the world.

A civic university, Brunel uses innovation and entrepreneurialism to drive the local economy, and to build important strategic partnerships with local organisations to bring benefit to and increase its impact in the local

community.

Brunel have previously been a powerhouse in university rugby, winning two British championships with the aim of repeating those achievements during the partnership with Ealing Trailfinders.

It has over 2,240 sports members across 56 different sports whilst being ranked in the top third of universities worldwide.

# 13,000 2,600 45

STUDENTS

STAFF

SPORTS CLUBS



# BRUNEL WAS 'TOP RATED' FOR ITS SPORTS SCENE

(IN THE 2018 WHICH? STUDENT SURVEY)

## TOP THIRD

OF UNIVERSITIES WORLDWIDE  
(QS WORLD UNIVERSITY RANKINGS 2019)

## 54K PAID OUT

IN SPORTS  
SCHOLARSHIP AWARDS

## 25 BUCS MEDALS

WON BY SPORTS SCHOLARS IN 2018

## 95% OF STUDENTS IN WORK

FURTHER STUDY OR A COMBINATION OF  
BOTH SIX MONTHS AFTER GRADUATION

## 94K PAID OUT

IN SCHOLARSHIPS AND BURSARIES  
ON THIS PROGRAMME

## 3RD BEST

CAMPUS ACCOMMODATION  
IN LONDON (THE 2017)

## 13 DIFFERENT SPORTS

COVERED BY SCHOLARSHIPS

## OVER 150

CLUBS AND SOCIETIES  
TO JOIN

## ONE OF THE COUNTRY'S TOP 25

UNIVERSITIES FOR GRADUATE  
STARTING SALARIES

(ACCORDING TO THE SUNDAY TIMES GOOD UNIVERSITY GUIDE)

## AMONG THE TOP 10 UK UNIVERSITIES FOR BOOSTING GRADUATE SALARIES

(ACCORDING TO THE ECONOMIST)





**TRAILFINDERS**  
RUGBY ACADEMY



# BRUNEL SUBJECT OPPORTUNITIES

- AEROSPACE ENGINEERING
- ANTHROPOLOGY
- BIOMEDICAL SCIENCES
- BRUNEL BUSINESS SCHOOL
- CHEMICAL ENGINEERING
- CIVIL ENGINEERING
- COMMUNICATION AND MEDIA STUDIES
- COMPUTER SCIENCE
- CREATIVE WRITING
- DESIGN
- DIGITAL MEDIA
- ECONOMICS AND FINANCE
- EDUCATION
- ELECTRONIC AND ELECTRICAL ENGINEERING
- ENGLISH
- ENVIRONMENTAL SCIENCES
- FILM STUDIES
- FLOOD AND COASTAL ENGINEERING
- PSYCHOLOGY
- PUBLIC HEALTH AND HEALTH PROMOTION
- SOCIAL WORK
- SOCIOLOGY
- SPECIALIST COMMUNITY PUBLIC HEALTH NURSING
- SPORT, HEALTH AND EXERCISE SCIENCES
- THEATRE
- GAMES DESIGN
- GLOBAL CHALLENGES
- HISTORY
- JOURNALISM
- LAW
- LIFE SCIENCES
- MATHEMATICS
- MECHANICAL AND AUTOMOTIVE ENGINEERING
- MEDICINE
- MUSIC
- OCCUPATIONAL THERAPY
- PHYSICIAN ASSOCIATE
- PHYSIOTHERAPY
- POLITICS AND INTERNATIONAL RELATIONS







**TRAILFINDERS**  
RUGBY ACADEMY



# EALING TRAILFINDERS PLAYER PATH

RECRUITED THROUGH UCAS,  
SCOUTED AT CLUB, SCHOOLS  
AND OTHER ROUTES

VARIED DEGREES FOR UK AND  
INTERNATIONAL STUDENTS



RECRUITED THROUGH OUR ET EPP  
AND PARTNER SCHOOLS  
AND COLLEGES

APPRENTICESHIPS  
AVAILABLE IN VARIOUS  
INDUSTRIES WHICH IS  
STRUCTURED AROUND RUGBY

VAR  
PLA







**TRAILFINDERS**  
RUGBY ACADEMY



# HWAYS

**TRAILFINDERS**  
RUGBY ACADEMY

LOAN RUGBY,  
ET A' LEAGUE GAMES,  
7'S TOURNAMENTS

DEDICATED PLAYER  
DEVELOPMENT MANAGER

EMPLOYMENT OPPORTUNITIES  
POST APPRENTICESHIPS

UNIVERSITY  
PLAYER

**TRAILFINDERS  
ACADEMY  
PLAYER**

**INTEGRATED  
ACADEMY  
PLAYER**



**CONTRACTED  
PROFESSIONAL  
RUGBY PLAYER**

BUCS RUGBY,  
BRUNEL UNIVERSITY  
SATURDAY SIDE

EMPLOYMENT OPPORTUNITIES  
POST DEGREE

DEDICATED PLAYER  
DEVELOPMENT MANAGER





**TRAILFINDERS**  
RUGBY ACADEMY



# PLAYER DEVELOPMENT

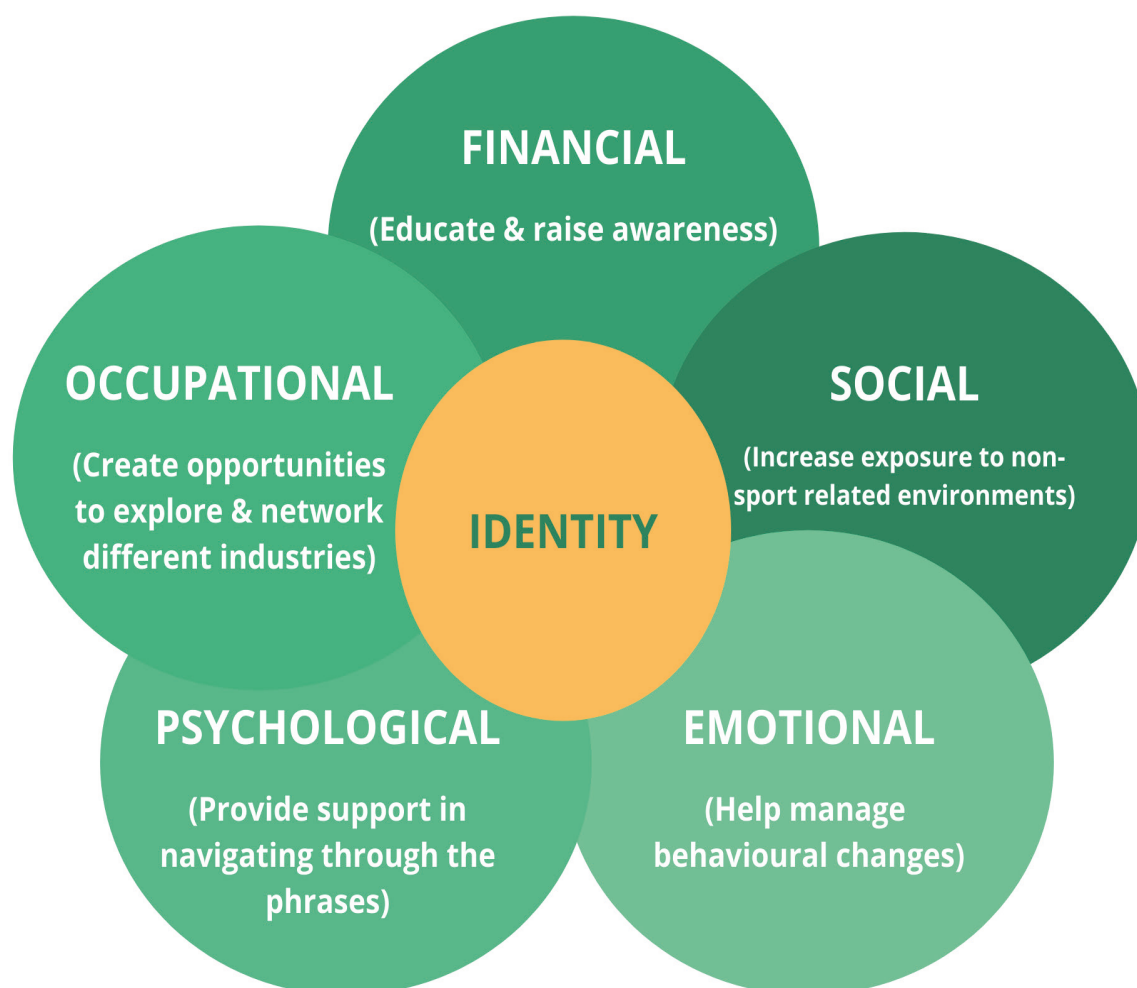
**EALING TRAILFINDERS ARE RESOLUTE IN TAKING CARE OF THEIR PLAYERS BY BEING THE FIRST CHAMPIONSHIP CLUB TO RECRUIT AND EMBED A PLAYER DEVELOPMENT AND TRANSITION MANAGER (PDM).**



**LOU MEADOWS**

I am extremely honoured to take on the dynamic position in building a team to facilitate a positive journey for these players during their time with us. Our role is vital in encouraging players to recognise the importance of developing and enhancing their profiles off the pitch as well as on. 14 years of experience in coaching and education has formed a strong basis for implementing an appropriate programme of support that includes many bespoke elements to meet the individual needs of each player alongside a schedule of relevant workshops including; employability training, career insights, mental health provision, financial education and other relevant personal development aspects that contribute to supporting the player off the pitch in order to further enhance their performance on the pitch. I truly believe that understanding and building your identity away from sport is a fundamental part in not only sustaining a longer playing career but also in providing the confidence and security in being able to manage the highs and lows that come with it. The Academy players are in a unique position to utilise the support and resources of Brunel University and a Professional Club to not only make them better players but also better people.

My first few months has focused on building relationships with the players, understanding their interests, personalities, educational and cultural backgrounds, in order to identify how best to support them. The Director of Rugby, Ben Ward, is keen to promote the importance of the PDM role as a key part to every player's development allowing me access to training, matches and meetings. This not only increases my visibility to the players but gives me the chance to observe their behaviours within different



contexts. For example, I have been working closely with the Player Leadership Group on their role and how to effectively execute their ideas, messages and actions, focussing on the different types of communication. Not only will this develop the leadership and communication skills of those players but also enhance their effectiveness within the team.

The personal journey of every rugby player is different, with multiple transitions, including selection, injuries and becoming a husband or parent, making this a very responsive but exciting role where every conversation and meeting is different. Accessibility is important in encouraging the uptake of my support, so I offer the

flexibility of booking a structured meeting in my office at the club for more confidential discussions or more casual meetings in coffee shops near the players' houses.

Case Study; Most recently I supported Kieran Murphy and Ben West who are retiring at the end of the season with completing an onboarding training week with St James's Place Wealth Management Company, their new employer, alongside a full training week in preparation for a match on Saturday. Understanding the importance of both and providing a solution that takes the pressure off the players being pulled in two directions was paramount in ensuring both outcomes were achieved.





**TRAILFINDERS**  
RUGBY ACADEMY



# WHAT YOU GET AS A RUGBY PLAYER







# TRAILFINDERS

## RUGBY ACADEMY



## THE TRAILFINDERS RUGBY ACADEMY IS HIGHLY COMMITTED TO DEVELOPING THE SCHOLARS OFF THE PITCH AS WELL AS IN RUGBY.

Throughout the year there are a number of events which focus on their growth away from the sport, with talks from industry experts as well as practical demonstrations.

The Academy were treated to an evening with Michelin Star Chef Adam Gray who delivered a workshop on 'Preparing Food for Performance.'

Gray, who has over 35 years of experience in the Catering industry has held a Michelin star for over a decade and is also a passionate rugby coach and supporter.

He gave the Academy players an

insight in to how to cook well in their accommodation during their time at Brunel University London and how they can ensure that their diet influences their performance positively.

During The Rugby Championship, Charlie Dearman and Sione Funaki were invited to Sky Sports for a behind the scenes tour of the facilities for the New Zealand v Australia match.

The Academy duo saw the game alongside three World Cup Winners as the action unfolded in the studio. Sean Fitzpatrick, Michael Lynagh and Will Greenwood were here on punditry duty

before spending time chatting to the Scholars.

Dearman, who has featured on loan at Maidenhead Rugby Club who are coached by Greenwood himself, said the day was an unforgettable experience.

"Watching a game with three ex internationals is something that you don't expect when you're 18 years old, but it was amazing to be there.

To see it unfold and all of the analysis that they do was really insightful, and being able to chat with such legends of the game was one of the best moments of my life"





**TRAILFINDERS**  
RUGBY ACADEMY



# EDUCATION AT BRUNEL

## TEACHING EXCELLENCE FRAMEWORK

University is of high quality and regularly exceeds the baseline quality expected of higher education institutions.

## TIMES HIGHER EDUCATION

Ranked in the top 50 universities in the UK for 2020.

## SNAPSHOTS

- Sport and Design/Engineering Courses are rated among the best in the world in those fields.
- Brunel is organised into three colleges – Engineering, Design and Physical Sciences; Business, Arts and Social Sciences; and Health and Life Sciences – and three major research institutes – Energy Futures and Environment; Health and Societies; and Materials and Manufacturing.
- Brunel is a campus-based university, which means students are never more than 10 minutes walk away from halls of residence, social and sports facilities, lecture theatres, or the library, plus all amenities and numerous restaurants, bars, coffee shops are based on campus.
- Brunel is just a tube ride away from the bustling city of London.
- Brunel is a member of the Association of Commonwealth Universities, the European University Association and Universities UK.
- Brunel Has an excellent student to staff ratio: 16 staff for every 1 student.
- Our Partnership provides aspiring professional rugby players with the opportunity to access all levels of Higher education along the three environments;-

## FOUNDATION DEGREE AT STUDY;

A pathway to higher education. Through our numerous foundations programs you are able to follow a pathway that is designed to meet the needs of students by offering world-class pathway programmes leading to undergraduate and postgraduate degrees at Brunel University London.

## UNDERGRADUATE STUDY

With over 300 courses across multiple disciplines Brunel provide a learning environment to maximise your career prospects and employability.





# TRAILFINDERS

RUGBY ACADEMY



# THE RUGBY PROGRAMME

## POSTGRADUATE

Brunel has over 100 taught Master's courses on offer, and many are available in either full-time or part-time modes. This coupled with the amount of PhD options makes Brunel University London a great choice for postgraduate study.

## BRUNEL MISSION STATEMENT

We will strengthen our position as a leading multidisciplinary research-intensive technology university delivering economic, social and cultural benefit. Excellence, innovation and an entrepreneurial spirit will be at the heart of everything we do.

True to the words of our Royal Charter, we will continue to lead and innovate with new models of research, education and knowledge transfer, placing the needs of society at the heart of our academic activity.

We will build on our heritage of working closely with businesses, governments and the not-for-profit sector to fulfil our mission.

We will establish strategic partnerships and commercial ventures to strengthen our position and support the University's long-term sustainability.

We will be at the pinnacle of technology universities in the UK and firmly established in the top tier internationally of this special group of institutions.

Our success will be a tribute to our students and staff, who will share this vision and work as one to achieve it.







**TRAILFINDERS**  
RUGBY ACADEMY



# THE PARTNERSHIP - WHAT CAN WE OFFER

- **BURSARY**
- **FINANCIAL ASSISTANCE WITH UNIVERSITY ACCOMMODATION AND TUITION FEES**
- **INCORPORATION INTO ONE OF THE MOST COMPREHENSIVE RUGBY PROGRAMMES IN THE COUNTRY, BASED IN LONDON**
- **OPPORTUNITY TO BE PART OF EALING TRAILFINDERS PATHWAY FROM ACADEMY THROUGH TO FIRST TEAM CHANCE TO TRAIN FULL TIME WITH EALING TRAILFINDERS ACADEMY AND FIRST TEAM SQUADS**
- **INVITATION TO ATTEND FULL PRE-SEASON TRAINING WITH EALING TRAILFINDERS**
- **WEEKLY ELITE LEVEL COACHING FROM EALING TRAILFINDERS TEAM OF PROFESSIONAL COACHES**
- **BESPOKE STRENGTH & CONDITIONING PROGRAMME RUN BY EALING TRAILFINDERS S&C COACHES**
- **MEDICAL SUPPORT FROM BRUNEL'S AND EALING TRAILFINDERS' MEDICAL TEAMS**
- **UNCONDITIONAL OFFERS**







**TRAILFINDERS**  
RUGBY ACADEMY



# THE RUGBY PROGRAMME

- **FREE ENTRY TO EALING TRAILFINDERS GAMES**
- **UNIVERSITY ACCOMMODATION NEXT TO BRUNEL SPORTS FACILITIES WITH OTHER SPORT SCHOLARS (BISHOPS COMPLEX)**
- **FREE BRUNEL SPORTS SCHOLARSHIP TRAINING KIT**
- **FREE ACCESS TO BRUNEL'S SPORTS FACILITIES**
- **INCLUDING THE INDOOR ATHLETICS CENTRE AND STRENGTH & CONDITIONING GYM**
- **FREE ACCESS TO BRUNEL'S LANCASTER HOTEL SPA FACILITIES ON CAMPUS WHICH INCLUDE ICE POOL, JACUZZI, SAUNA AND STEAM ROOM**
- **PASTORAL SUPPORT INCLUDING MENTORING, EDUCATIONAL ASSISTANCE AND CHAPLAIN GUIDANCE**
- **PROFESSIONAL NUTRITIONAL SUPPORT**





**TRAILFINDERS**  
RUGBY ACADEMY



# THE RUGBY PROGRAMME



## THE PARTNERSHIP GIVES THE PLAYERS THE MOST ROUNDED ENVIRONMENT IN ORDER TO SUCCEED AT THE TOP LEVEL.

Ealing Trailfinders have a number of partner clubs across a range of divisions to give members of the academy game time week in week out.

As well as the exposure to National League Rugby, the academy players are also invited to train with the first team at Ealing Trailfinders. This is not only during the week in the build up to matches, but also other opportunities against first class opposition.

During the pre-season period, the England coaching staff led by Eddie Jones delivered a series of coaching sessions directly to the academy, showing them what is needed to be at the top level of the club game.

Engagements and team building events with the Royal Navy Commandos and RAF contribute to the development of intra personal and group skills to perform in the most intense of environments.

Support comes from coaches but also from the extensive backroom staff at Ealing Trailfinders. As well as the guidance needed for their rugby, there is plenty of off-field assistance. The full time medical staff ensure that players are in the best condition possible for training and matches, and they work alongside the nutritionists to help them prepare by assisting with dietary needs.

In addition to our Brunel BUCS sides we

have launched three new sides. Ealing Trailfinders 'A' will play fixtures for Saturday or A team against professional clubs reserve teams such as Saracens and Exeter and contribute to the pathway towards professional rugby. Out two Saturday sides will compete in the RFU adults leagues. The launch of these sides provide members of the Trailfinders Academy with a comprehensive exposure to top level rugby.

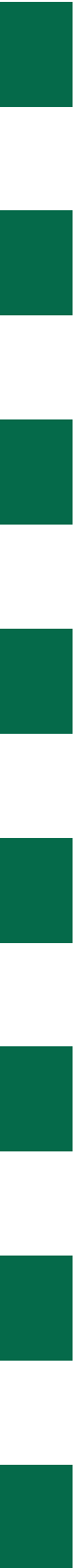
There is vast support for the players off the pitch, psychologist, our Player Development Manager as well as the Club Chaplain who are all available to assist as required.





# TRAILFINDERS

RUGBY ACADEMY







**TRAILFINDERS**  
RUGBY ACADEMY



# ACADEMY COACHING STAFF



**PADDY GILL – HEAD COACH**

Brings plenty of experience from the National Leagues having been involved with the Trailfinders during their National One winning campaign. Last year he coached Chinnor and has also been involved in University Rugby before, leading St Mary's in the BUCS League.



**BRETT WILKINSON – ASSISTANT COACH**

Former London Irish player, Ulster Academy Head Coach and Coach at Hong Kong Rugby Union



**JAMES BROOKS – ASSISTANT COACH**

The former England Sevens player has a huge amount of experience, with a long career spanning nearly 20 years. He played for the likes of Northampton Saints, Wasps and Leeds Carnegie in the top flight, and won both the Heineken Cup and Premiership during his time at Wasps. Since retiring he has coached in Hong Kong as well as at Richmond and Old Ethamians organising their rugby programme with St Mary's University.



# TRAILFINDERS

RUGBY ACADEMY



**TOM BROWN – ASSISTANT COACH**

Captained Trailfinders in their famed promotion campaign of 2014/15, Tom has a storied resume within both union and league codes, including appearances for Cardiff Blues, Newport Gwent Dragons and featuring at the 2004 U21 IRB World Championship for Wales.



**KIERAN CAMPBELL – TRANSITION COACH**

Former London Irish Scrum-Half, Ireland U20's Head Coach and Ulster Academy Manager



**STEVE NEVILLE – TRANSITION COACH**

Combines his role with his current position as Scrum Coach with the first team at Ealing Trailfinders.



**ANDY HOLLOWAY – SKILLS AND KICKING COACH**

Andy has previously worked with the likes of England Sevens, Blackheath and Cambridge University, and he currently coaches the first team at Ealing Trailfinders.







**TRAILFINDERS**  
RUGBY ACADEMY



# SUPPORTING STAFF



**COLM O'SULLIVAN** –  
Head of Athletic Development



**ALEX CLARKE** –  
Strength and Conditioning



**EMILY PRATT** –  
Strength and Conditioning



**JORDAN ROSE** –  
Strength and Conditioning



**DAVID SMART** –  
Sports Scientist



**TOM BUNTING** –  
Head of Medical



**MEGAN WILLIAMS** –  
Sports Therapist



**LYDIA RAMPIN** –  
Physiotherapist



**TIM NEWHOUSE** –  
Head of Performance Analysis



**SPENCER HILL** –  
Performance Analysis



**ISOBEL FISHER** –  
Physiotherapist



**TRAILFINDERS**  
RUGBY ACADEMY



# SUPPORTING STAFF



**HARRIET PEARSON –**  
Team Manager



**GARETH RISE –**  
Project & Programme Manager



**ALEX SHAW –**  
Head of Recruitment



**GEMMA GOW –**  
Nutritionist



**LOU MEADOWS –**  
Player Development Manager





# TRAILFINDERS

RUGBY ACADEMY



## PADDY GILL

HEAD COACH



**HAVING BEEN AT EALING TRAILFINDERS FOR OVER 12 YEARS, I'VE SEEN THE CLUB GROW FROM STRENGTH TO STRENGTH.**

I am delighted to support the pro team with this pathway as Head Coach for the next few years. Working within the professional environment for the past 7 years has given me great experience and understanding of what our scholars will have to do to make the next step into the green and white.

Our scholars work extremely hard day to day to develop physically and technically and put themselves in the best place possible to achieve their goals. This hard work has allowed players to be capped by the seniors in the Championship as well as internationally with Wales Under 20s, Scotland Under 20s and Hong Kong.

Most recently Olly Frostick was called up to Scotland Under 20s for this year's Six Nations, making three appearances, starting against Ireland and coming off the bench against England and Italy.

Aside from the on pitch news, we have had a number of exciting building projects both at Trailfinders Sports Club and Brunel University which will elevate the quality of the support to a new level. Our new High Performance Centre based at Brunel University includes both a 4G pitch and a state of the art Strength & Conditioning suite.

Staffing of the Academy has also increased both on field and off the field. We have been lucky to acquire the services of former Connacht and Ireland A Prop Brett Wilkinson, who brings a wealth of experience from coaching in both Hong Kong and Ireland. Another welcomed addition is Colm O'Sullivan who after a successful year at our partners Henley College has joined the Academy as Head of Athletic



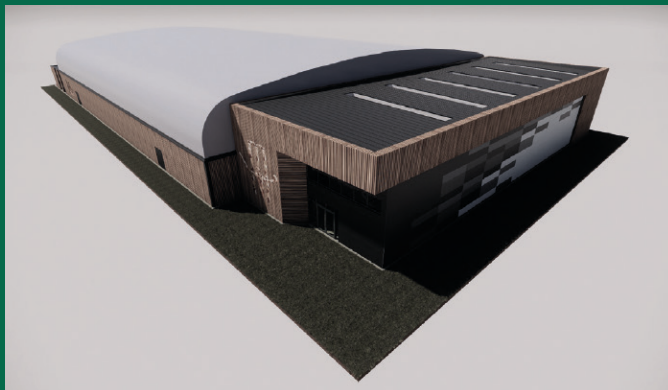
Development. The staffing overall has nearly doubled in the past 12 months and this has given the players that extra level of support needed to progress.

Our Player Pathway has also taken a further step forward as we're

now offering an Apprenticeship as well as of our traditional Degree route at Brunel University. Players now have the opportunity to train full time alongside their work commitments and represent Brunel University in our League campaign on a Saturday.



# FACILITY DEVELOPMENTS



The facilities at Trailfinders Sports Club are constantly expanding. The newest addition is a new state of the art indoor training centre currently under construction to be completed by end of 2021.

The new building will include a rugby pitch as well as changing rooms, and will offer an alternative method to training for the Academy.

At Brunel University there is also a new performance gym being built specifically for the Trailfinders Rugby Academy players, as well as a 3G pitch that will enable the Academy to emulate the expansive style of rugby played by the first term



**STATE OF THE ART NEW BRUNEL 3G RUGBY PITCH**





**TRAILFINDERS**  
RUGBY ACADEMY



# HEAD OF RECRUITMENT

ALEX SHAW

**HAVING SPENT YEARS FRUSTRATED AT THE AMOUNT OF TALENT THAT GOES MISSING FROM THE ENGLISH GAME ONCE PLAYERS' TIME AT SCHOOL HAS FINISHED, I TOOK THE HEAD OF RECRUITMENT JOB AT EALING TRAILFINDERS CONFIDENT THAT THE CLUB AND BRUNEL UNIVERSITY COULD GO A SIGNIFICANT WAY TOWARDS REDUCING THAT.**

English rugby is based around an elite system at the schoolboy level and that shows up in the attention that young rugby players do or do not receive from Premiership academies. It is not, however, an indication of a lack of talent in the player pool. Finding these players that have been missed, underrated, or overlooked is by far the most enjoyable aspect of my job.

In addition to that, I also work closely with Director of Rugby Ben Ward on the senior recruitment that occurs at the club and, as such, we are able to compliment the scholars that we have coming through the academy and ensure that pathways exist for these players to progress through to playing men's rugby at the highest levels. First and foremost, we want that to be at Ealing Trailfinders.

By centring our academy at the university level, we are able to cater for late developers in a way in which no U18-based academy is able to do. Those clubs have to make a hard and fast decision on whether or not a player is ready to be a professional at 18 years of age. We are able to continue developing players beyond that and, critically, ensure that they have a qualification to fall back on, something which is increasingly important given the fragile and relatively short-term nature of a professional rugby career.

We aim to look at players from all backgrounds and if successful in



your application to Brunel, it does not matter if you have played international age-grade rugby or never even made it into your county set-up, everyone is treated the same. The harder you work on the programme, the more you will get out of it and the quicker you will progress. Attitude, not reputation, is what concerns us.

Our pathway is further expanding, too, with The Henley College coming onboard with us as a route for ambitious players to take up at the age of 16 and spend two seasons competing in the RFU ACE League. We are also putting in place affiliations with other schools around the country, all of whom have bought



# TRAILFINDERS

## RUGBY ACADEMY



into the project we are building at Ealing Trailfinders. Further to that, we are establishing a global scouting network that will encompass Europe, Africa, Asia and Oceania initially, with plans to also grow the profile of the programme in North and South America shortly thereafter.

Our goal is to create a route into the professional game for players who have the potential to reach it, but for whom the reality of the current system means that their chances of doing so are slim to none. I spent 10 years as a journalist focused on age-grade rugby talent, scouting the likes of Maro Itoje at Harrow and Marcus Smith at Brighton College, and there was no doubt that elite rugby would

be able harness their potential and allow them to reach the top.

That said, the players that have always stuck with me were the ones who had the natural skill, hunger and love of the game to succeed, but whose late adoption of the sport, lack of confidence in their own game or just a slight lack of technical polish, ultimately brought a premature end to their hopes of playing professional sport. That is what our programme is better equipped to cater for than any other I have experienced in my career in and around rugby.

I witnessed it myself during the first year of the programme, where players who were deemed not good enough

or not ready to join a Premiership senior academy the previous season, took huge leaps and bounds in their development as rugby players, thanks to the dedication they have shown and the opportunities we are able to provide them with in terms of training, playing time and off-the-field education.

Between the combination of the expert coaching, a quality education, a route to a professional club, financial assistance and a genuine and committed objective of bringing the core of our senior squad through our academy, I would argue that there is nowhere better to develop as a rugby player than at Ealing Trailfinders and Brunel University.





**TRAILFINDERS**  
RUGBY ACADEMY



# EALING TRAILFINDERS FACILITIES

Trailfinders Sports Club is one of West London's premier sports venues, set in 20 acres of landscaped gardens it is home to Ealing Trailfinders Rugby Club.

On site there are two all-weather 3G rugby pitches as well as grass pitches, a cricket ground and pavilion, floodlit tennis courts, 5/7-a-side football/hockey pitch and Strength and Conditioning facilities which means it is a

fantastic base to excel in rugby.

Conveniently located in West Ealing with easy access from the M40 and M4, Trailfinders Sports Club is fast becoming the main sporting hub of the local community.

We also hosts the England Rugby Coaches who use the facility to prepare for internationals.



## TRAILFINDERS SPORTS CLUB, HOME OF EALING TRAILFINDERS IS A 5,000 SEATER STADIUM WITH A 4G PITCH. SPORTS FACILITIES INCLUDE:

- TWO FULL SIZE ALL WEATHER RUGBY PITCHES AND GRANDSTAND, FLOODLIT
- 3G ALL WEATHER 5/7- A-SIDE FOOTBALL/ TRAINING PITCH, FLOODLIT
- ELITE STANDARD S&C FACILITIES
- TWO GRASS RUGBY PITCHES
- MEDICAL AREAS
- ANALYSIS SUITE



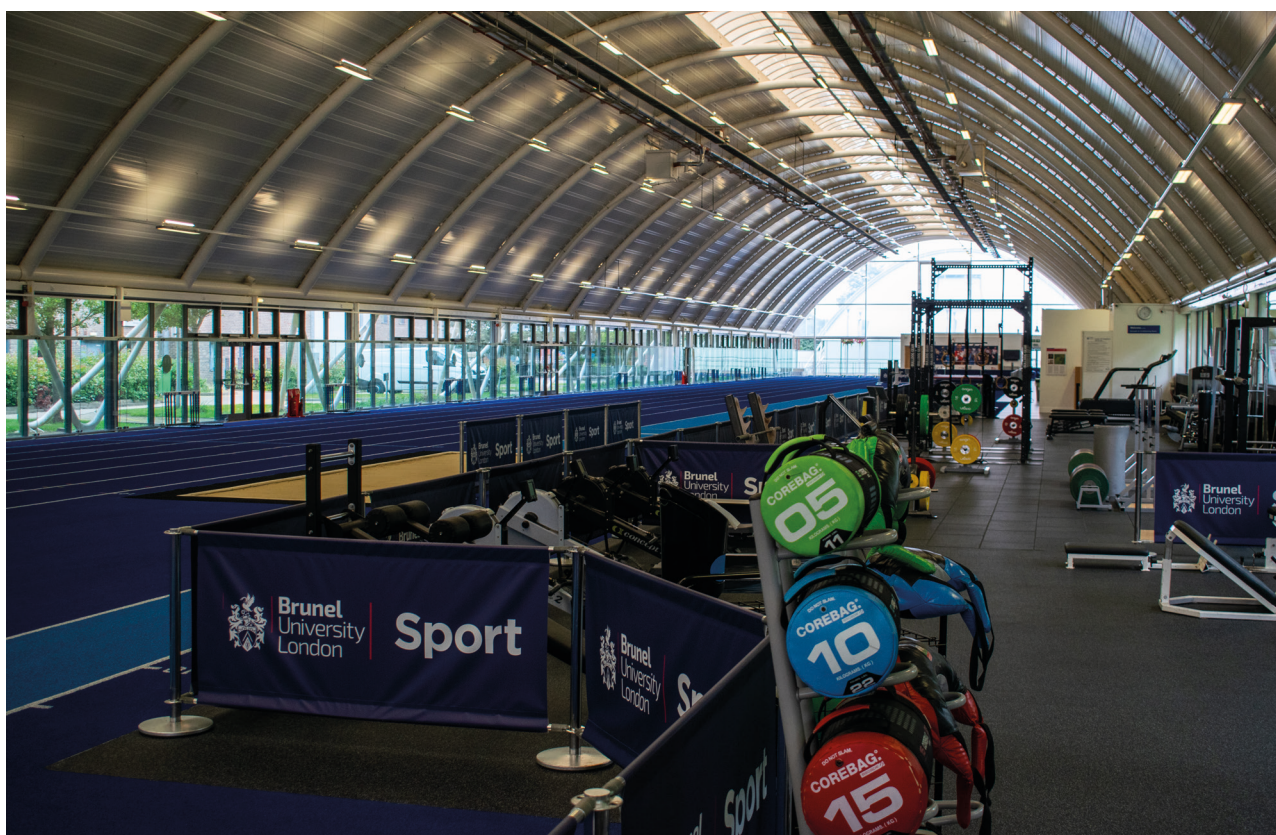




**TRAILFINDERS**  
RUGBY ACADEMY



# BRUNEL UNIVERSITY FACILITIES



The state-of-the-art sports facilities rank among the best university facilities in the UK and were used by some of the world's top athletes, including Usain Bolt and Yohan Blake.

Completed in 2005, the multi-million pound Indoor Athletics Centre is the centrepiece of the performance sport facilities. As one of the best indoor training facilities in the country the IAC is a UK Athletics Regional Performance Centre and is the chosen training venue for many of the country's finest athletes.

In the Sports Park you'll find a 400-metre athletics track with tennis and netball courts, pitches for football, rugby and hockey and an FA-registered 3G pitch.

The Sports Park is serviced by a Sports Pavilion, which went under a £1.2million refurbishment programme in 2013 and boasts numerous team changing rooms with integrated showers, unisex toilets and catering services.







**TRAILFINDERS**  
RUGBY ACADEMY



# PLAYER SPOTLIGHT

## EALING TRAILFINDERS HAVE PROMOTED TWENTY PLAYERS FROM THE TRAILFINDERS RUGBY ACADEMY TO THE FIRST TEAM SQUAD FOR THE 2021/22 SEASON.

The group who are only in the second year of their degree, have shown how significantly they have improved after just one year in the Academy. Ultimately we want players to come through this system and leave university with a degree and a professional rugby contract at Ealing Trailfinders. It's going to be an exciting season for the guys that have stepped up and a real chance for them to show themselves to the first team coaches.

*"Firstly, this is a really exciting piece of news to come from our Academy, and once again shows our vision for it to become the biggest programme in the country. The players are here on merit and we see them very much in our plans for the future. We've seen the likes of Harry Dugmore and Elliot Chilvers break through, so it's great to see such a large number of Academy players training with the first team."*

**Paddy Gill, Head Coach**



**HARRY DUGMORE**

The back-rower was previously at Whitgift School. Since joining the Trailfinders Rugby Academy Harry has gone onto train full time with the professional team and has had a number of first team appearances, most notably in the Championship playoff v Saracens.

Harry is continuing to go from strength to strength, a loan opportunity with National one outfit Blackheath will ensure he continues to develop and push towards more appearances for Ealing Trailfinders.

**STUDYING**

Sport Science and Coaching BSc



**ELLIOT CHILVERS**

After winning the Coaches Player of the Season in his first year in the Academy, Elliott has stepped up to train full time with the professional team. His rapid development and progression saw him awarded with a professional contract that works around his studies at Brunel University.

Elliot made senior appearances for the club in the matches against Richmond. Whilst this season will see Elliot on loan at Chinnor playing in national one, which will contribute to his already rapid progress and ensure that he keeps developing towards more professional team opportunities.

**STUDYING**

Business Management and Marketing BA.



# TRAILFINDERS

## RUGBY ACADEMY



**JARA OGUNTIBEJU**

**Jara joined the academy from South Africa via a trial period with the Scottish Rugby Union. The 6'8' lock already has been impressing senior and academy coaches during his involvement in training.**

Jara appetite to learn and develop has seen him be rewarded with multiple training opportunities with the professional team. The full-time nature of the academy coupled with Jara physical stature, and ability to learn makes Jara an exciting prospect for the future.

### **STUDYING**

Sport Science BSc.



**TOM GEORGIO**

**Tom joined the academy late during the academic clearing period of 2020. The ex Yorkshire Academy player quickly settled in.**

Once in academy training he impressed the coaches with his attention to detail, adaptability and skillset. This saw Tom step up towards the professional team training group. Tom will take up a professional contract at the end of his second academic year that will see him train as a full time professional players around his studies.

### **STUDYING**

Sport Science BSc.



**CAM TERRY**

**Having spent a year playing professionally for Gloucester but with few opportunities to play, Cam decided to make the move to Trailfinders Academy. Not only was it a move with his rugby goals in mind, but also his academic ambitions, with the programme allowing him to safeguard his future away from the rugby pitch, too.**

Although joining as a back row it was quite evident that the skill set was there for a transition to Hooker. Through the support of scrum coach Steve Neville and Trailfinders Hooker Alun Walker, Cam has successfully moved in to the hooker role. A loan move to Chinnor will provide Cam with multiple game opportunities to hone his skills in the role and push for professional team honours.

### **STUDYING**

BA in Economics & Business Finance





**TRAILFINDERS**  
RUGBY ACADEMY



# PLAYER OPPORTUNITIES

**COMPETITIVE OPPORTUNITIES ARE CENTRAL TO EACH PLAYERS JOURNEY IN THE TRAILFINDERS RUGBY ACADEMY. THE ACADEMY PROVIDES A DIVERSE AND VARIED AMOUNT OF GAMES OPPORTUNITIES FOR ALL MEMBERS AT VARIOUS LEVELS.**

## BUCS & UNIVERSITY RUGBY

University rugby is an excellent environment for players to develop, learn and perform. The BUCS leagues are the home to all university sides in the UK. Brunel University compete at the premier level of BUCS rugby and have a fixture list that includes many of the top university rugby programs in the UK. Each Wednesday up to 4 mens sides compete in the BUCS leagues. Brunel also hold fixtures against other high quality opposition such as the Army, RAF, Navy, Oxford Blues, Cambridge Blues and many other national league sides.

## RAGING BULL SHIELD & RFU LEAGUE RUGBY

Brunel University field two Saturday sides competing in the RFU leagues and the Raging Bull Shield. This provides academy members with further playing opportunities on a weekly basis. The fixtures in the Raging Bull competition include many other championship and national league clubs reserve teams.

## SEVENS

The Trailfinders Rugby Academy compete across multiple levels of Sevens. The Brunel University sides enter the BUCS sevens tournaments competing against other top rugby playing universities. The Trailfinders Rugby Academy compete in the UK Super 7's Series. The UK series is the highest form of invitational sevens in Great Britain with many of the top sevens teams and players competing in a series of four tournaments throughout the summer. Additionally to the UK



Super 7 series the academy also enters other elite invitational tournaments in the UK.

## EALING A-TEAM

The Ealing A team compete against other professional clubs of the likes of Saracens, Ospreys and Exeter plus many more. The A team is made up of predominantly academy players with a number of first XV players and is a vital stepping stone for academy players towards first XV and professional rugby.

## LOAN

For players at the relevant stage in their development loan opportunities are an important and meaningful stage for a

player in progressing towards 1st XV. Academy players have had successful loan opportunities at National league and other championship level clubs. Once a player is at this relevant level the academy staff organise and manage these opportunities for academy players.

## 1ST XV

Academy players have a direct route towards first XV rugby at Ealing Trailfinders. We have already seen seventeen players progress to appearances in the first team in the three years since the academy was launched. There is also the opportunity for players to be invited to train with the first XV squad.





# TRAILFINDERS

RUGBY ACADEMY



## BEN RYAN

EX ENGLAND AND FIJI 7S HEAD COACH

"Sevens is such a valuable asset to use for a players development. I love how it gives you so many opportunities to test your skills and your decision making and it has to be underpinned by game understanding and fitness. Outside the game, understanding how to prepare and recover, look after yourself physically and mentally and also be resilient and self sufficient adds up to an accelerated tool to help any player become their best version."





# TRAILFINDERS

RUGBY ACADEMY







# TRAILFINDERS

RUGBY ACADEMY







**TRAILFINDERS**  
RUGBY ACADEMY



# TESTIMONIALS

"What is so special about the Ealing Trailfinders and Brunel University Rugby Programme is the opportunity it presents athletes and scholars alike.

Being able to take your love for rugby and combine it with your studies gives students the chance to progress as an elite level athlete alongside gaining an education that can set them up for life after full-time sport.

What Ben Ward has created for aspiring athletes is the best of both worlds; A degree in a field of your choice, plus the cutting edge of coaching and mentoring professional sport has to offer. That is something you will not find easily in other educational establishments or professional sports teams."

**ROSS DONEGHAN,**  
**HEAD OF RUGBY,**  
**THE LATYMER SCHOOL**

"The Trailfinders Rugby Academy has amazing facilities and as a school we use them regularly. With the addition of the Brunel University programme this lifts the Academy to an elite level. It is a pleasure for us to have Ealing Trailfinders present the Academy programme to our students as an option for the future."

**JAMES COLES**  
**DIRECTOR OF RUGBY,**  
**ST BENEDICTS**



"It is brilliant to have a partnership with the Trailfinders Rugby Academy. It gives us a great chance to support the development of these talented players as they set out on their senior playing careers. Being able to advise, mentor and see these young lads develop is a real buzz!

It's clear to see what a strong programme it is and how Brunel University is establishing a fantastic rugby environment to let these lads flourish! I'm really pleased our club is playing a part as one of the academy partners."

**WILL GREENWOOD,**  
**2003 RUGBY WORLD**  
**CUP WINNER WITH**  
**ENGLAND**





**TRAILFINDERS**  
RUGBY ACADEMY



# TESTIMONIALS

"The opportunity to train alongside the first team and get expert coaching from great coaches is an amazing experience. It has given me an insight into the hard work and commitment it takes to be a professional rugby player and I'm excited to further my skills on the field and in the classroom."

**DAN HISCOCKS,**  
**TRAILFINDERS RUGBY**  
**ACADEMY SCHOLAR**  
**AND FORMER**  
**WALES UNDER 18**  
**INTERNATIONAL**



"Middlesex see this as an opportunity where aspirational young players can blend their educational studies while developing their rugby and leadership skills in a caring academy."

They have access to excellent facilities and experienced coaches while preparing themselves for a life long participation in a sport of their choice with strong core life values."

**ALED TRENHAILE**  
**HEAD OF RUGBY,**  
**KIRKHAM GRAMMAR SCHOOL**

"I am very happy to support the initiative that Ealing Trailfinders and Brunel University have forged which allows promising young players to maintain a high level of Rugby whilst continuing their academic education at a top university."

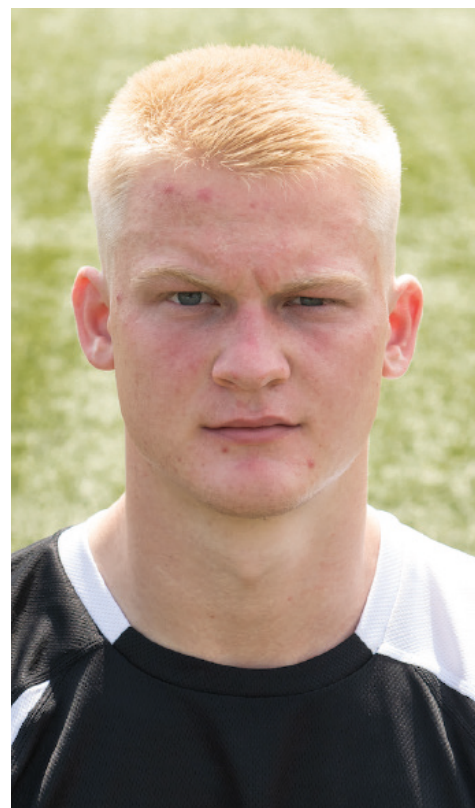
**BOB LAWLESS**  
**PRESIDENT MIDDLESEX**

"Middlesex see this as an opportunity where aspirational young players can blend their educational studies while developing their rugby and leadership skills in a caring academy."

They have access to excellent facilities and experienced coaches while preparing themselves for a life long participation in a sport of their choice with strong core life values."

"The academy has been a fantastic opportunity for me to develop my rugby alongside studies. Training day in day out in a professional environment has taught me the standards required to reach the top level of the sport."

**EWAN FENLEY,**  
**TRAILFINDERS RUGBY**  
**ACADEMY SCHOLAR**







**TRAILFINDERS**  
RUGBY ACADEMY



# TESTIMONIALS



"Any time a student can mix studying and playing rugby at a higher level is a great option. They are great facilities here, you've got everything you want to be a good player so if you're going to university you can come here and then have two options in life."

**EDDIE JONES -  
ENGLAND HEAD COACH**

## **BETHAN HISCOCKS - MOTHER OF ACADEMY MEMBER DAN HISCOCKS**

"I want to thank you for enabling Dan to have the most rewarding 9 months in every aspect of his life at Brunel and Ealing Trailfinders.

His experience has been everything he [and I] could have hoped for and much more. The most important thing for me as his mum is that I have never seen him happier or more content. He has thrived in the environment you have created and it has brought out the very best in Dan. The support and care have restored his confidence and reinforced his desire to succeed.

As a mother, I have complete confidence that you have the boys' best interests, academic and sporting at heart and that you will encourage and support them along the most appropriate and realistic path for them."

## **HARRISON OBATOYINBO RC TOULON, FORMER TRAILFINDERS RUGBY ACADEMY**

"Ealing Trailfinders have been fantastic for me. They have a great rugby infrastructure and a genuine, supportive community of staff and players who made me feel welcome and wanted.

The Trailfinders Rugby Academy is a great opportunity for young players with goals of being a professional. Thank you to everyone who's helped me to kick start my career."

"Ealing Trailfinders' new partnership with Brunel University is an outstanding world class pathway for a young rugby player wishing to combine their higher education with a professional rugby career. The high quality support and provision is impressive and unrivalled in the UK market right now."

**MATTHEW GOLD  
ABINGDON SCHOOL  
AND NIGERIA 7S**



**TRAILFINDERS**  
RUGBY ACADEMY



# TRAINING SESSIONS FROM ENGLAND COACHES INCLUDING EDDIE JONES

EALING TRAILFINDERS HAVE BUILT UP A STRONG RELATIONSHIP WITH EDDIE JONES AND THE ENGLAND COACHES IN RECENT YEARS MEANING THEY REGULARLY VISIT TO DELIVER TRAINING, AND MEMBERS OF THE TRAILFINDERS RUGBY ACADEMY ARE INCLUDED TO GAIN EXPERIENCE FROM SOME OF THE BEST COACHES IN THE WORLD.







**TRAILFINDERS**  
RUGBY ACADEMY



# PARTNER SCHOOLS



## HENLEY COLLEGE

The Trailfinders Rugby Academy is now recruiting Under 18s to join in September, in partnership with The Henley College. This provides the opportunity to play in the RFU Ace League, the highest division for that age group in the country.

Offering the perfect environment for talented rugby players to combine their rugby development with a continued education, the Trailfinders Rugby Academy operates alongside The Henley College operating in the RFU ACE League South. You will have the opportunity to compete at one of the highest levels of college sport whilst completing your studies in a variety of engaging BTEC, A Level or foundation courses before using the pathway available to transition towards apprenticeships and Brunel University London.

Whilst the rugby programme requires a high level of commitment, the academic programme comes first. Students are encouraged to stay on top of their studies, with the rugby staff providing pastoral support in helping the students to manage their time effectively. The College has a diverse academic offer to suit the needs of the student, including 32 different A Levels and a wide range of BTEC and vocational courses.

Through the partnership with Ealing Trailfinders, Henley College rugby players have an articulated pathway to Brunel University. Brunel Rugby Union field four teams and have BUCS fixtures weekly. On a Trailfinders scholarship at Brunel, you will have the opportunity to train with the first team at Ealing Trailfinders, giving you immediate exposure to international standard players to help your development. You may also be invited to attend full pre-season training with the club.



## ST JOSEPHS

Ealing Trailfinders and The Trailfinders Rugby Academy have been partners with St Josephs College Ipswich for three years.

The partnership seeing The Trailfinders Rugby Academy being the principle sponsor of the St Joes first XV, The prestigious 15 aside festival and newly launched 7s tournament.

St Joesphs college is a key member of the Elite Performance Pathway, providing scholarships and financial support for aspirational rugby players from within the Trailfinders talent development pathway.

As part of the partnership, Ealing Trailfinders work with St Josephs coaching staff to facilitate the best possible environment for student athletes at the school in S&C, Analysis and technical rugby development. The St Joseph's performance squad will also attend training days and play fixtures at Trailfinders Sports Club as well as the performance facility at Brunel University London.

With the Elite Player Pathway, St Josephs College and Brunel University London partnerships it means that you can join the Trailfinders Rugby Academy from an early age all the way through to completing a degree before embarking on a professional career.

### What is on offer;

Scholarships to Study at St Joseph's

Fee reduction at St Joseph's

Routes into St Joseph's elite rugby programme





**TRAILFINDERS**  
RUGBY ACADEMY



# PARTNER SCHOOLS



## CARDINAL NEWMAN

Our relationship with Cardinal Newman has blossomed over the past 2 years and we are developing it further going forward. Newman Trailfinders Academy has been successful in bringing players from Sussex into our Brunel University Pathway. We are lucky to have a number of players joining us from Newman Trailfinders this season including hot prospect Jude York. Moving on, Newman Trailfinders will be expanding and will become a hub in the area for aspiring Brunel University players where they will get rugby and S&C support.



## The Duke of York's Royal Military School

### THE DUKE OF YORK

Set in 150 acres of Kent countryside and ranked in the top two percent of schools in England for GCSE progress 8, the school provides an all-round education with a strong academic focus.

The award-winning school, with outstanding leaders and managers (Ofsted 2018), offers a unique blend of academic school life, sports, and the arts combined with an impressive military heritage.

The partnership with the Trailfinders Rugby Academy means that we can provide scholarships for full board education, another significant development in our growth to combine professional sport and education. The goal is for the school to become one of the pillars of the elite playing squad at Ealing Trailfinders moving forward, as students progress through the Trailfinders Academy pathway.

With the Elite Player Pathway, Duke of York's and Brunel University London partnership it means that you can join the Trailfinders Rugby Academy from an early age all the way through to completing a degree before embarking on a professional career.

"I am excited that we are able to begin this partnership with Duke of York's Royal Military School and build on a budding relationship that has already seen two of the school's graduates join the Trailfinders Rugby Academy.

The school has a fantastic academic track record and has had great success in developing their students away from the rugby pitch as well as they do on it. If we can help provide our expertise on the field, then there is no reason why DoYRMS cannot become one of the premier rugby-playing state schools in the country.

By aligning our rugby pathways, we hope that many more DoYRMS students can progress through the school and go on to become key players for both the Trailfinders Rugby Academy and the Ealing Trailfinders senior squad."

Said Director of Rugby Ben Ward.

If you wish to join one of our partner school please contact us. We have a range of scholarship and support opportunities available.

To learn more please email

[academy@etprm.com](mailto:academy@etprm.com)

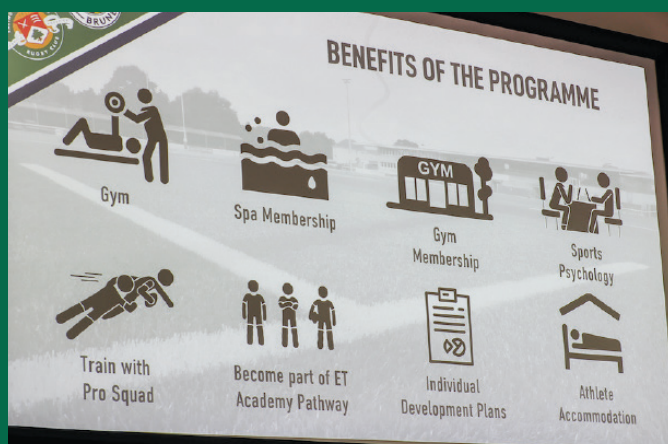




**TRAILFINDERS**  
RUGBY ACADEMY



# OPEN DAYS



## WHY ATTEND THE OPEN DAY?

- MEET STUDENTS AND STAFF FOR MORE INFORMATION ABOUT THE COURSE
- TAKE A CAMPUS TOUR WITH CURRENT STUDENTS TO FIND OUT ALL ABOUT LIFE AT BRUNEL
- COME AND SEE FOR YOURSELF WHY BRUNEL IS RANKED AMONG THE UK'S TOP 50 UNIVERSITIES (THE COMPLETE UNIVERSITY GUIDE 2018).

EMAIL [ACADEMY@ETPRM.COM](mailto:ACADEMY@ETPRM.COM) TO CONFIRM YOUR ATTENDANCE!

FURTHER DETAILS WILL BE ANNOUNCED VIA OUR WEBSITE AND SOCIAL MEDIA CHANNELS.

If you are interested in a private tour or to confirm you place on one of our open days please email [academy@etprm.com](mailto:academy@etprm.com)





**TRAILFINDERS**  
RUGBY ACADEMY



# WHERE TO FIND US

## EVENTS



We are partners with a large number of events throughout the year where we can be found to discuss everything the Trailfinders Rugby Academy has to offer.

Whether it's at the Rosslyn Park Sevens, the largest school rugby tournament in the world, or the St Joseph's Festival, our staff are visible at all of the biggest events to talk about our Academy.

To arrange a visit or to enquire about the timetable of events, please email [academy@etprm.com](mailto:academy@etprm.com)



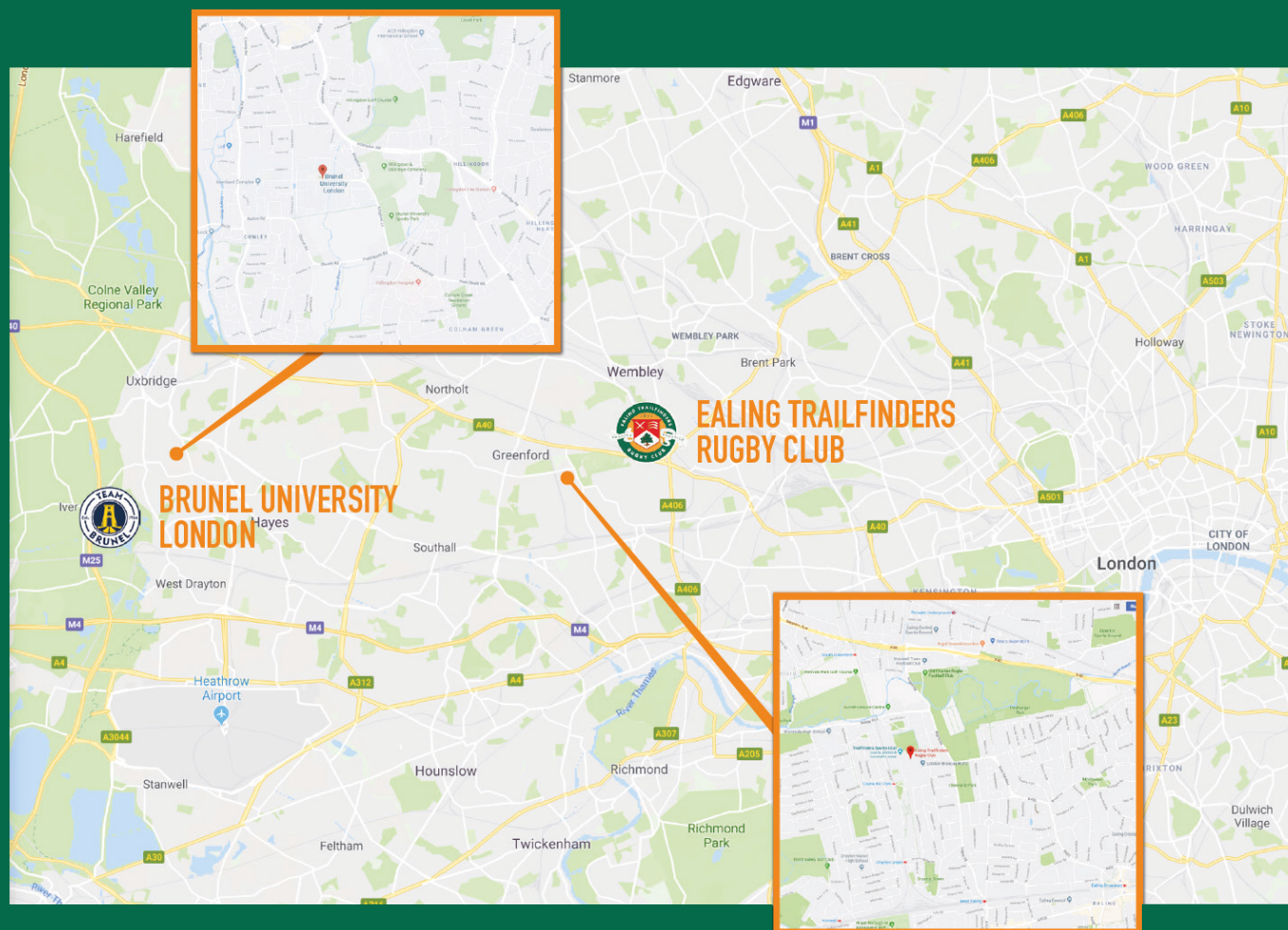


**TRAILFINDERS**  
RUGBY ACADEMY



# LOCATION & CONTACT

**EALING TRAILFINDERS RUGBY CLUB AND BRUNEL UNIVERSITY ARE LOCATED WITHIN 10 MILES OF EACH OTHER AND ARE BOTH IN THE HEART OF WEST LONDON, MEANING THERE WILL BE EASY ACCESS BETWEEN BOTH ORGANISATIONS FOR THE STUDENTS.**



**TRAILFINDERS SPORTS  
CLUB, CASTLE BAR,  
VALLIS WAY,  
WEST EALING, LONDON  
W13 0DD**

**BRUNEL UNIVERSITY  
LONDON, KINGSTON  
LANE, UXBRIDGE,  
MIDDLESEX,  
UB8 3PH**

**EMAIL DIRECTOR OF RUGBY BEN WARD ON [ACADEMY@ETPRM.COM](mailto:ACADEMY@ETPRM.COM) OR  
[BENWARDTEN@GMAIL.COM](mailto:BENWARDTEN@GMAIL.COM) TO ENQUIRE ABOUT THE PROGRAMME**



**TRAILFINDERS**  
RUGBY ACADEMY



# WHY STUDY IN LONDON?

## CAPITAL CITY OF ENGLAND

London is the largest and most populated city in the United Kingdom.

## TRANSPORT LINKS

There is global access with both London Heathrow and Gatwick airports easily accessible, welcoming over 100 million passengers per year. The London Underground makes travelling through the city straight forward, with 270 stations across the city.

## WORK OPPORTUNITIES

522,000 people are employed in the City of London with higher average salaries than the rest of the United Kingdom.

## CULTURE & SOCIAL

Over 300 languages are spoken in London. It has a vibrant nightlife with over 2,000 bars, 300 music venues and the world-renowned West End theatres for socialising.

## SPORT

Home of some of the most famous sporting events and stadia in the world including Twickenham, Wembley, Wimbledon and Lords.







# 15 SKILLS OUR ATHLETES CAN TRANSFER FROM SPORT TO THE WORKING WORLD



## TEAMWORK

Athletes understand how to work effectively as part of a team



## COMMUNICATION

Sport provides athletes with important communication skills



## GROWTH

Athletes are always looking for opportunities to grow and develop



## EMOTION

Athletes understand how to manage their emotions effectively



## TENACITY

Athletes learn how to work hard and demonstrate this on and off the field



## COPING

Athletes have the resources available to deal effectively with setbacks



## RESILIENCE

Athletes have developed key skills to be resilient



## LEADERSHIP

Athletes understand what it takes to be a great leader



## LEARNING

Athletes have a strong sense of continuous learning



## DETERMINATION

Athletes have high levels of determination



## PRESSURE

Athletes have learnt how to work effectively under pressure



## CONCENTRATION

Athletes can maintain concentration levels



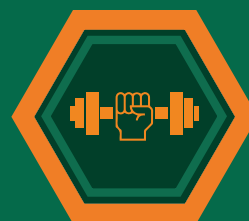
## COMMITMENT

Athletes understand the importance of being committed to a team



## GOAL SETTING

Athletes understand how to set process, outcome and performance goals



## MOTIVATION

Athletes understand how to maintain high levels of self motivation